



Niton UK Ltd  
 Unit 19, The Calvert Centre  
 Woodmancott, Winchester, SO21 3BN

## Certificate of Verification

XL3t-90751 Standard Mining

Reading No 46  
 Mode General Metals  
 Time 2022-07-20 20:30  
 Duration 52.70  
 Units %  
 Sigma Value 2  
 Alloy1 SS-304 : 0.00  
 Sample ID 1 304 St St Ref sample  
 Sample ID 2  
 Sample State  
 Inspector KSG  
 Location HOME OFFICE  
 User Login Niton UK



Ele	%	+/-	$\pm 2\sigma$
Ti	0.030	+/-	0.014
V	0.105	+/-	0.013
Cr	18.365	+/-	0.058
Mn	1.886	+/-	0.048
Fe	70.146	+/-	0.205
Co	0.212	+/-	0.056
Ni	8.064	+/-	0.077
Cu	0.421	+/-	0.021
Zn	<LOD	:	0.011
As	0.010	+/-	0.002
Se	<LOD	:	0.002
Zr	<LOD	:	0.002
Nb	0.006	+/-	0.001
Mo	0.440	+/-	0.005
Ru	<LOD	:	0.003
Pd	<LOD	:	0.007
Ag	<LOD	:	0.008
Cd	<LOD	:	0.007
Sn	0.016	+/-	0.004
Sb	<LOD	:	0.008
W	<LOD	:	0.019
Pb	<LOD	:	0.002
Bi	<LOD	:	0.002
Mg	<LOD	:	0.002
Al	<LOD	:	0.445
Si	0.272	+/-	0.040
P	<LOD	:	0.029
S	<LOD	:	0.025

Supervised By: \_\_\_\_\_



Niton UK Ltd  
 Unit 19, The Calvert Centre  
 Woodmancott, Winchester, SO21 3BN

### Certificate of Verification

XL3t-90751 Standard Mining

Reading No 47  
 Mode General Metals  
 Time 2022-07-20 20:32  
 Duration 52.20  
 Units %  
 Sigma Value 2  
 Alloy1 SS-304 : 0.49  
 Sample ID 1 304 St St Ref sample  
 Sample ID 2  
 Sample State  
 Inspector KSG  
 Location HOME OFFICE  
 User Login Niton UK



Ele	%	+/-	$\pm 2\sigma$
Ti	0.072	+/-	0.029
V	0.109	+/-	0.024
Cr	18.481	+/-	0.111
Mn	1.823	+/-	0.087
Fe	70.186	+/-	0.264
Co	<LOD	:	0.206
Ni	7.908	+/-	0.132
Cu	0.426	+/-	0.040
Zn	<LOD	:	0.015
As	<LOD	:	0.011
Se	<LOD	:	0.004
Zr	<LOD	:	0.002
Nb	0.006	+/-	0.002
Mo	0.466	+/-	0.009
Ru	<LOD	:	0.005
Pd	<LOD	:	0.012
Ag	<LOD	:	0.015
Cd	<LOD	:	0.012
Sn	0.023	+/-	0.007
Sb	<LOD	:	0.018
W	<LOD	:	0.035
Pb	<LOD	:	0.007
Bi	<LOD	:	0.009
Mg	<LOD	:	0.002
Al	<LOD	:	0.438
Si	0.265	+/-	0.038
P	<LOD	:	0.018
S	<LOD	:	0.025

Supervised By: \_\_\_\_\_

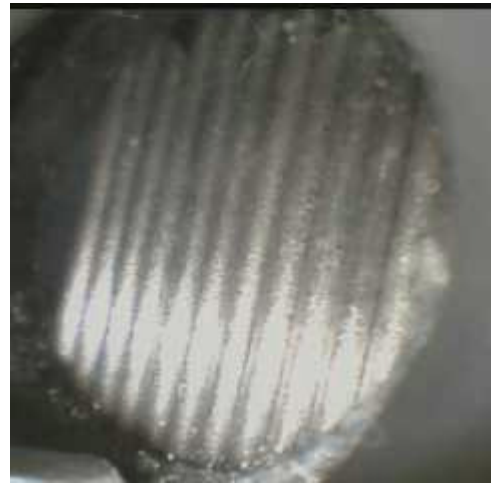


Niton UK Ltd  
 Unit 19, The Calvert Centre  
 Woodmancott, Winchester, SO21 3BN

## Certificate of Verification

XL3t-90751 Standard Mining

Reading No 48  
 Mode General Metals  
 Time 2022-07-20 20:35  
 Duration 52.67  
 Units %  
 Sigma Value 2  
 Alloy1 SS-304 : 0.14  
 Sample ID 1 Taylorcraft wire  
 Sample ID 2  
 Sample State Surface prepped  
 Inspector KSG  
 Location HOME OFFICE  
 User Login Niton UK



Ele	%	+/-	$\pm 2\sigma$
Ti	0.046	+/-	0.014
V	0.061	+/-	0.012
Cr	18.006	+/-	0.057
Mn	0.462	+/-	0.041
Fe	71.471	+/-	0.226
Co	0.146	+/-	0.055
Ni	8.611	+/-	0.081
Cu	0.113	+/-	0.017
Zn	0.010	+/-	0.004
As	0.016	+/-	0.003
Se	<LOD	:	0.002
Zr	<LOD	:	0.002
Nb	0.003	+/-	0.001
Mo	0.051	+/-	0.002
Ru	<LOD	:	0.002
Pd	<LOD	:	0.006
Ag	<LOD	:	0.007
Cd	<LOD	:	0.006
Sn	0.013	+/-	0.003
Sb	<LOD	:	0.007
W	<LOD	:	0.018
Pb	<LOD	:	0.002
Bi	<LOD	:	0.002
Mg	<LOD	:	0.002
Al	<LOD	:	0.493
Si	0.506	+/-	0.044
P	0.048	+/-	0.009
S	0.055	+/-	0.008

Supervised By: \_\_\_\_\_

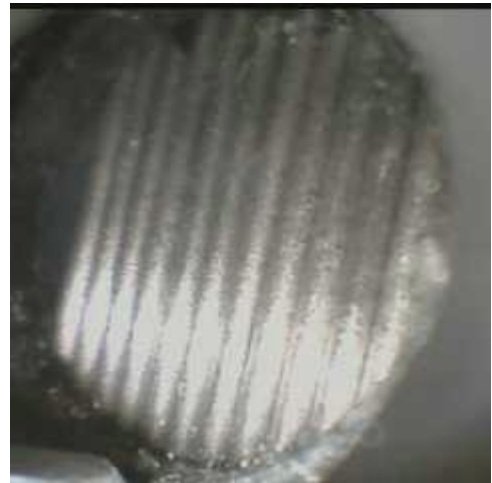


Niton UK Ltd  
Unit 19, The Calvert Centre  
Woodmancott, Winchester, SO21 3BN

## Certificate of Verification

XL3t-90751 Standard Mining

Reading No 49  
Mode General Metals  
Time 2022-07-20 20:37  
Duration 50.54  
Units %  
Sigma Value 2  
Alloy1 SS-304 : 1.42  
Sample ID 1 Taylorcraft wire  
Sample ID 2  
Sample State Surface prepped  
Inspector KSG  
Location HOME OFFICE  
User Login Niton UK



Ele	%	+/-	$\pm 2\sigma$
Ti	<LOD	:	0.032
V	0.071	+/-	0.012
Cr	17.945	+/-	0.057
Mn	0.477	+/-	0.042
Fe	71.188	+/-	0.226
Co	0.183	+/-	0.055
Ni	8.632	+/-	0.083
Cu	0.099	+/-	0.017
Zn	0.008	+/-	0.004
As	0.016	+/-	0.003
Se	<LOD	:	0.002
Zr	<LOD	:	0.002
Nb	0.003	+/-	0.001
Mo	0.053	+/-	0.002
Ru	<LOD	:	0.002
Pd	<LOD	:	0.007
Ag	<LOD	:	0.007
Cd	<LOD	:	0.006
Sn	0.011	+/-	0.003
Sb	<LOD	:	0.007
W	<LOD	:	0.018
Pb	<LOD	:	0.002
Bi	<LOD	:	0.002
Mg	<LOD	:	0.002
Al	0.695	+/-	0.253
Si	0.500	+/-	0.045
P	0.048	+/-	0.009
S	0.053	+/-	0.009

Supervised By: \_\_\_\_\_

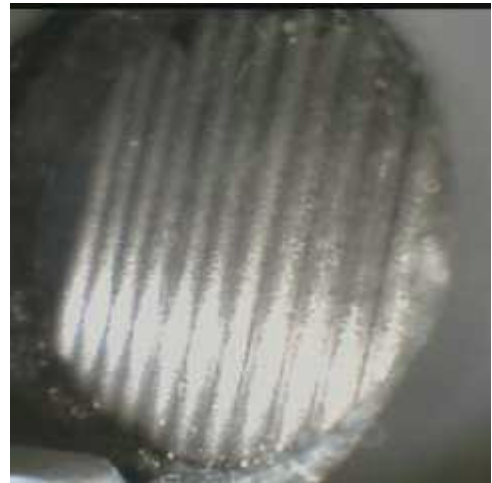


Niton UK Ltd  
 Unit 19, The Calvert Centre  
 Woodmancott, Winchester, SO21 3BN

## Certificate of Verification

XL3t-90751 Standard Mining

Reading No 50  
 Mode General Metals  
 Time 2022-07-20 20:39  
 Duration 50.85  
 Units %  
 Sigma Value 2  
 Alloy1 SS-304 : 0.04  
 Sample ID 1 Taylorcraft wire  
 Sample ID 2  
 Sample State Surface prepped  
 Inspector KSG  
 Location HOME OFFICE  
 User Login Niton UK



Ele	%	+/-	$\pm 2\sigma$
Ti	<LOD	:	0.027
V	0.059	+/-	0.012
Cr	17.987	+/-	0.058
Mn	0.475	+/-	0.042
Fe	71.394	+/-	0.216
Co	0.268	+/-	0.056
Ni	8.665	+/-	0.081
Cu	0.114	+/-	0.018
Zn	0.014	+/-	0.004
As	0.016	+/-	0.003
Se	<LOD	:	0.002
Zr	<LOD	:	0.002
Nb	0.003	+/-	0.001
Mo	0.051	+/-	0.002
Ru	<LOD	:	0.002
Pd	<LOD	:	0.009
Ag	<LOD	:	0.008
Cd	<LOD	:	0.006
Sn	0.012	+/-	0.004
Sb	0.008	+/-	0.004
W	<LOD	:	0.030
Pb	<LOD	:	0.002
Bi	<LOD	:	0.002
Mg	<LOD	:	0.002
Al	<LOD	:	0.463
Si	0.491	+/-	0.045
P	0.046	+/-	0.009
S	0.048	+/-	0.008

Supervised By: \_\_\_\_\_

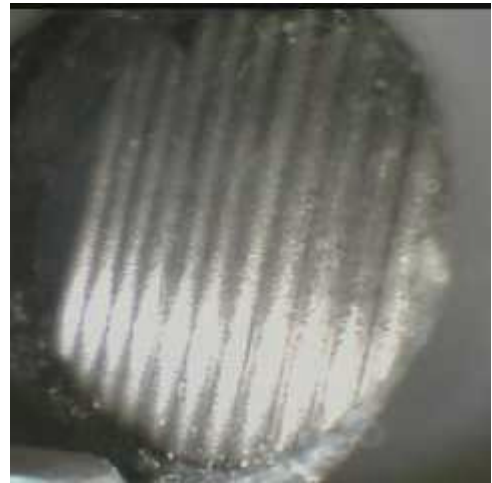


Niton UK Ltd  
Unit 19, The Calvert Centre  
Woodmancott, Winchester, SO21 3BN

## Certificate of Verification

XL3t-90751 Standard Mining

Reading No 51  
Mode General Metals  
Time 2022-07-20 20:40  
Duration 52.11  
Units %  
Sigma Value 2  
Alloy1 SS-304 : 0.03  
Sample ID 1 Taylorcraft wire  
Sample ID 2  
Sample State Surface prepped  
Inspector KSG  
Location HOME OFFICE  
User Login Niton UK



Ele	%	+/-	$\pm 2\sigma$
Ti	0.039	+/-	0.013
V	0.059	+/-	0.011
Cr	18.046	+/-	0.055
Mn	0.493	+/-	0.040
Fe	71.394	+/-	0.215
Co	0.219	+/-	0.053
Ni	8.601	+/-	0.078
Cu	0.109	+/-	0.017
Zn	0.014	+/-	0.004
As	0.016	+/-	0.003
Se	<LOD	:	0.002
Zr	<LOD	:	0.002
Nb	0.003	+/-	0.001
Mo	0.053	+/-	0.002
Ru	<LOD	:	0.002
Pd	<LOD	:	0.006
Ag	<LOD	:	0.007
Cd	<LOD	:	0.006
Sn	0.013	+/-	0.003
Sb	<LOD	:	0.007
W	<LOD	:	0.022
Pb	<LOD	:	0.002
Bi	<LOD	:	0.002
Mg	<LOD	:	0.002
Al	<LOD	:	0.468
Si	0.540	+/-	0.046
P	0.037	+/-	0.009
S	0.045	+/-	0.008

Supervised By: \_\_\_\_\_

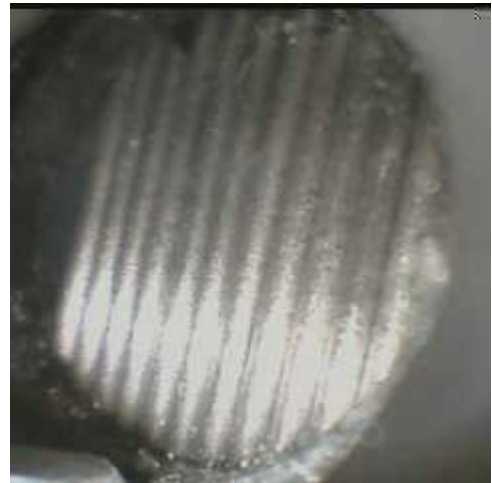


Niton UK Ltd  
Unit 19, The Calvert Centre  
Woodmancott, Winchester, SO21 3BN

## Certificate of Verification

XL3t-90751 Standard Mining

Reading No 52  
Mode General Metals  
Time 2022-07-20 20:40  
Duration 153.50  
Units %  
Sigma Value 2  
Alloy1 90Zn 10Al : 0.00  
AVERAGE Avg of 49-51  
Sample ID 2  
Sample State Surface prepped  
Inspector KSG  
Location HOME OFFICE  
User Login Niton UK



Ele	%	+/-	$\pm 2\sigma$
Ti	<LOD	:	0.029
V	0.063	+/-	0.012
Cr	17.993	+/-	0.057
Mn	0.482	+/-	0.041
Fe	71.325	+/-	0.219
Co	0.223	+/-	0.055
Ni	8.633	+/-	0.081
Cu	0.107	+/-	0.017
Zn	0.012	+/-	0.004
As	0.016	+/-	0.003
Se	<LOD	:	0.002
Zr	<LOD	:	0.002
Nb	0.003	+/-	0.001
Mo	0.052	+/-	0.002
Ru	<LOD	:	0.002
Pd	<LOD	:	0.008
Ag	<LOD	:	0.007
Cd	<LOD	:	0.006
Sn	0.012	+/-	0.003
Sb	<LOD	:	0.007
W	<LOD	:	0.023
Pb	<LOD	:	0.002
Bi	<LOD	:	0.002
Mg	<LOD	:	0.002
Al	<LOD	:	0.479
Si	0.510	+/-	0.045
P	0.044	+/-	0.009
S	0.048	+/-	0.008

Supervised By: \_\_\_\_\_