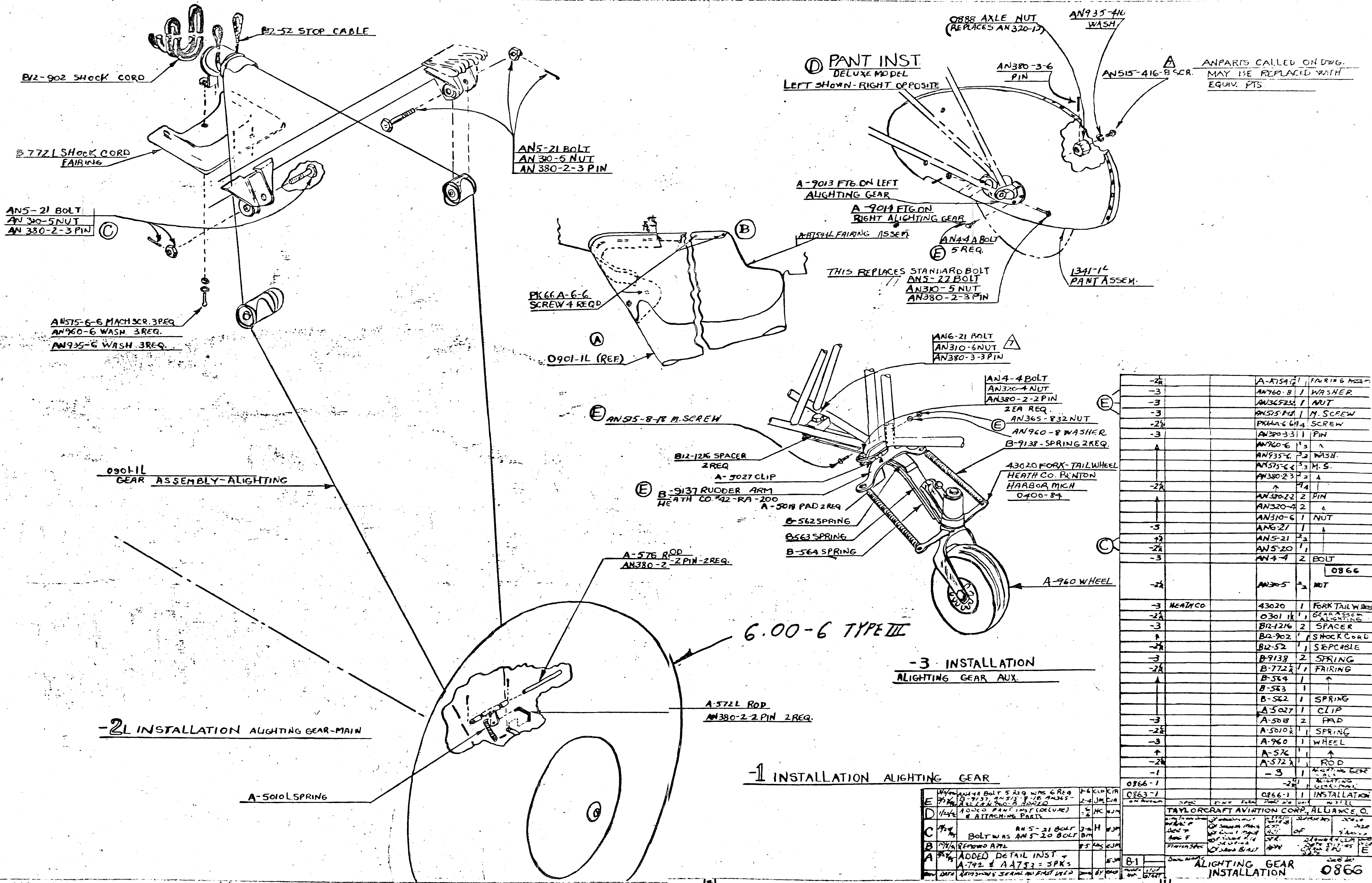


THIS SPECIFICATION IS THE PROPERTY OF THE BUREAU OF AERONAUTICS, WASHINGTON, D. C. IT IS LOANED TO YOU BY THE BUREAU OF AERONAUTICS, WASHINGTON, D. C. IT IS TO BE RETURNED TO THE BUREAU OF AERONAUTICS, WASHINGTON, D. C. WHEN YOU HAVE FINISHED WITH IT. IT IS NOT TO BE REPRODUCED OR TRANSMITTED IN ANY FORM OR BY ANY MEANS, ELECTRONIC OR MECHANICAL, INCLUDING PHOTOCOPYING, RECORDING, OR BY ANY INFORMATION STORAGE AND RETRIEVAL SYSTEM, WITHOUT PERMISSION IN WRITING FROM THE BUREAU OF AERONAUTICS, WASHINGTON, D. C.

201(1025)	A-102	4	GUSSET
201(1025)	A-103	4	CLEVIS
201(1025)	A-104	4	LUG
201(1025)	A-105	4	LUG
201(1025)	A-106	4	LUG
201(1025)	A-107	4	LUG
201(1025)	A-108	4	LUG
201(1025)	A-109	4	LUG
201(1025)	A-110	4	LUG
201(1025)	A-111	4	LUG
201(1025)	A-112	4	LUG
201(1025)	A-113	4	LUG
201(1025)	A-114	4	LUG
201(1025)	A-115	4	LUG
201(1025)	A-116	4	LUG
201(1025)	A-117	4	LUG
201(1025)	A-118	4	LUG
201(1025)	A-119	4	LUG
201(1025)	A-120	4	LUG
201(1025)	A-121	4	LUG
201(1025)	A-122	4	LUG
201(1025)	A-123	4	LUG
201(1025)	A-124	4	LUG
201(1025)	A-125	4	LUG
201(1025)	A-126	4	LUG
201(1025)	A-127	4	LUG
201(1025)	A-128	4	LUG
201(1025)	A-129	4	LUG
201(1025)	A-130	4	LUG
201(1025)	A-131	4	LUG
201(1025)	A-132	4	LUG
201(1025)	A-133	4	LUG
201(1025)	A-134	4	LUG
201(1025)	A-135	4	LUG
201(1025)	A-136	4	LUG
201(1025)	A-137	4	LUG
201(1025)	A-138	4	LUG
201(1025)	A-139	4	LUG
201(1025)	A-140	4	LUG
201(1025)	A-141	4	LUG
201(1025)	A-142	4	LUG
201(1025)	A-143	4	LUG
201(1025)	A-144	4	LUG
201(1025)	A-145	4	LUG
201(1025)	A-146	4	LUG
201(1025)	A-147	4	LUG
201(1025)	A-148	4	LUG
201(1025)	A-149	4	LUG
201(1025)	A-150	4	LUG
201(1025)	A-151	4	LUG
201(1025)	A-152	4	LUG
201(1025)	A-153	4	LUG
201(1025)	A-154	4	LUG
201(1025)	A-155	4	LUG
201(1025)	A-156	4	LUG
201(1025)	A-157	4	LUG
201(1025)	A-158	4	LUG
201(1025)	A-159	4	LUG
201(1025)	A-160	4	LUG
201(1025)	A-161	4	LUG
201(1025)	A-162	4	LUG
201(1025)	A-163	4	LUG
201(1025)	A-164	4	LUG
201(1025)	A-165	4	LUG
201(1025)	A-166	4	LUG
201(1025)	A-167	4	LUG
201(1025)	A-168	4	LUG
201(1025)	A-169	4	LUG
201(1025)	A-170	4	LUG
201(1025)	A-171	4	LUG
201(1025)	A-172	4	LUG
201(1025)	A-173	4	LUG
201(1025)	A-174	4	LUG
201(1025)	A-175	4	LUG
201(1025)	A-176	4	LUG
201(1025)	A-177	4	LUG
201(1025)	A-178	4	LUG
201(1025)	A-179	4	LUG
201(1025)	A-180	4	LUG
201(1025)	A-181	4	LUG
201(1025)	A-182	4	LUG
201(1025)	A-183	4	LUG
201(1025)	A-184	4	LUG
201(1025)	A-185	4	LUG
201(1025)	A-186	4	LUG
201(1025)	A-187	4	LUG
201(1025)	A-188	4	LUG
201(1025)	A-189	4	LUG
201(1025)	A-190	4	LUG
201(1025)	A-191	4	LUG
201(1025)	A-192	4	LUG
201(1025)	A-193	4	LUG
201(1025)	A-194	4	LUG
201(1025)	A-195	4	LUG
201(1025)	A-196	4	LUG
201(1025)	A-197	4	LUG
201(1025)	A-198	4	LUG
201(1025)	A-199	4	LUG
201(1025)	A-200	4	LUG

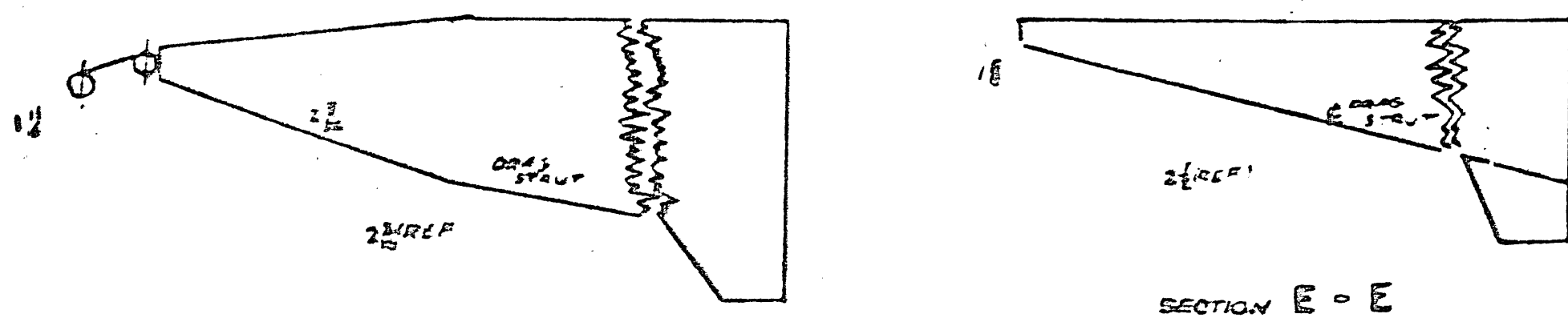


-2L		A-1754	1	FAIRING ASSEM.
-3		AN760-8	1	WASHER
-3		AN365F32	1	NUT
-3		AN515-416	1	M. SCREW
-2L		PK66A-6-6	4	SCREW
-3		AN380-3-3	1	PIN
-3		AN960-6	3	WASH.
-3		AN935-6	3	WASH.
-3		AN575-6-6	3	M. S.
-3		AN380-2-3	2	A
-2L			74	
-3		AN380-2-2	2	PIN
-3		AN320-4	2	A
-3		AN310-6	1	NUT
-3		AN6-21	1	B
-2L		AN5-21	2	A
-3		AN5-20	1	A
-3		AN4-4	2	BOLT
-2L		AN305	2	NUT
-3	HEATHCO	43020	1	FORK TAILWHEEL
-2L		O301 1L	1	GEAR ASSEMBLY
-3		B12-1216	2	SPACER
-3		B2-902	1	SHOCK CORD
-2L		B12-52	1	SEPCABLE
-3		B-9138	2	SPRING
-2L		B-772L	1	FAIRING
-3		B-564	1	A
-3		B-563	1	A
-3		B-562	1	SPRING
-3		A-5027	1	CLIP
-3		A-5018	2	PAD
-2L		A-5010	1	SPRING
-3		A-960	1	WHEEL
-3		A-576	1	A
-2L		A-572L	1	ROD
-1		-3	1	ALIGHTING GEAR
0866-1			2	ALIGHTING GEAR-MAIN
0866-1			1	INSTALLATION

TAYLORCRAFT AVIATION CORP. ALLIANCE O.

ALIGHTING GEAR INSTALLATION 0866

1/4	AN4-4 BOLT 5 REQ. WAS 6 REQ.	1/4	CLIP
1/4	B-9137, AN515-416, AN365-832, AN380-2-2 PIN 2REQ.	1/4	CLIP
1/4	A-5027, A-5018, A-5010, A-960, B-9138, B-562, B-563, B-564, AN380-2-2 PIN 2REQ., AN576 ROD AN380-2-2 PIN 2REQ., AN4-4 BOLT AN320-4 NUT AN380-2-2 PIN 2EA REQ., AN365-832 NUT AN960-8 WASHER B-9138 SPRING 2REQ., 43020 FORK-TAILWHEEL HEATH CO. PENTON HARBOUR MICH 0400-84, A-960 WHEEL, AN305 2 NUT, AN380-3-3 PIN, AN960-6 WASH. 3, AN935-6 WASH. 3, AN575-6-6 M. S. 3, AN380-2-3 2 A, AN380-2-2 2 PIN, AN320-4 2 A, AN310-6 1 NUT, AN6-21 1 B, AN5-21 2 A, AN5-20 1 A, AN4-4 2 BOLT, 0866, AN305 2 NUT, HEATHCO 43020 1 FORK TAILWHEEL, O301 1L 1 GEAR ASSEMBLY, B12-1216 2 SPACER, B2-902 1 SHOCK CORD, B12-52 1 SEPCABLE, B-9138 2 SPRING, B-772L 1 FAIRING, B-564 1 A, B-563 1 A, B-562 1 SPRING, A-5027 1 CLIP, A-5018 2 PAD, A-5010 1 SPRING, A-960 1 WHEEL, A-576 1 A, A-572L 1 ROD, -3 1 ALIGHTING GEAR, -2L 2 ALIGHTING GEAR-MAIN, 0866-1 1 INSTALLATION	1/4	CLIP
1/4	AN5-21 BOLT AN380-5 NUT AN380-2-3 PIN	1/4	CLIP
1/4	AN5-21 BOLT AN380-5 NUT AN380-2-3 PIN	1/4	CLIP
1/4	AN575-6-6 MACH SCR. 3REQ. AN960-6 WASH. 3REQ. AN935-6 WASH. 3REQ.	1/4	CLIP
1/4	ADDED DETAIL INST. A-772 & A-773 = SPRKS	1/4	CLIP



- AN518-6-10 SCREW
- AN365-632 NUT
- AN4-12 BOLT
- AN365-418 NUT
- AN970-4 WASHER
- 2 EACH REQ'D
- A-8089 NIPPLE
- AN315-840 NUT
- 20 EACH REQ'D

- AN4-12 BOLT
- AN365-418 NUT
- AN970-4 WASHER
- 2 EACH REQ'D

- AN4-12 BOLT
- AN365-428 NUT
- AN970-4 WASHER
- 2 EACH REQ'D
- AN3-11 BOLT
- AN365-1032 NUT

- AN4-12 BOLT
- AN365-428 NUT
- AN970-4 WASHER
- 2 EACH REQ'D
- AN4-11 BOLT
- AN365-418 NUT
- 5 EACH REQ'D

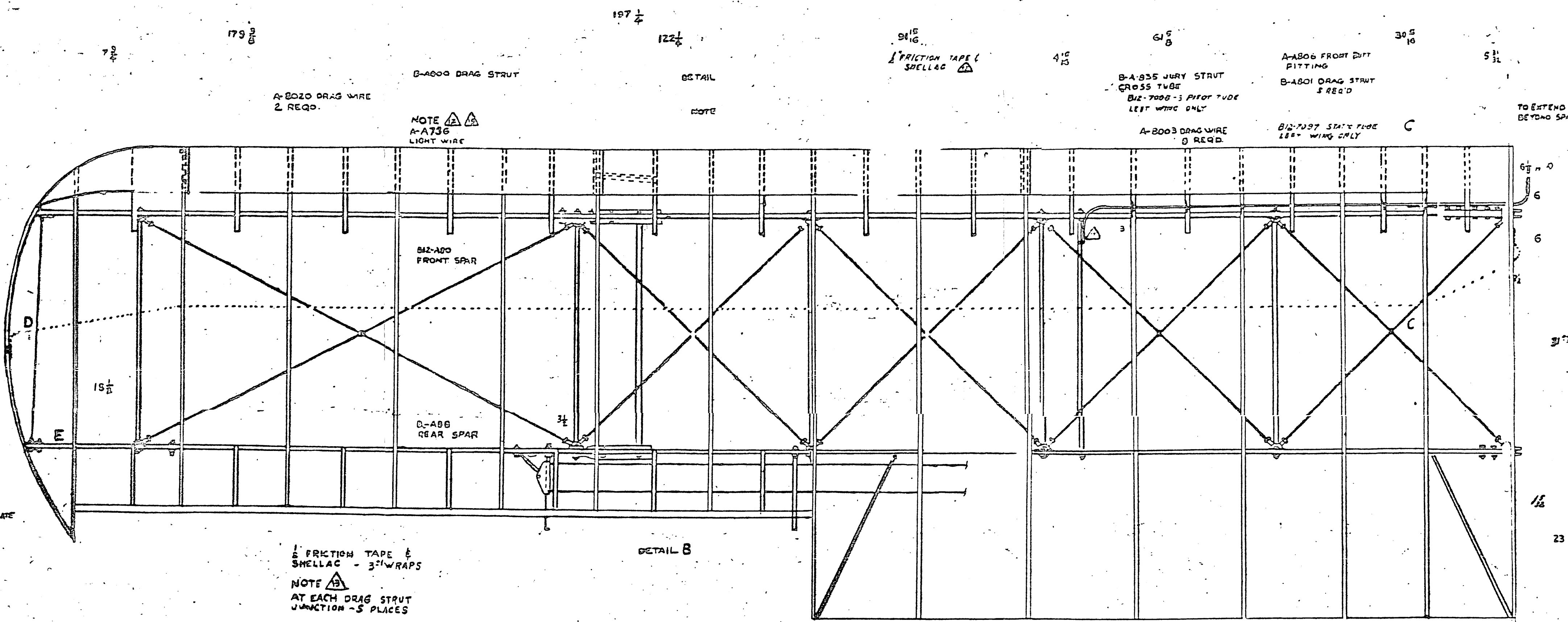
- AN4-12 BOLT
- AN365-428 NUT
- AN970-4 WASHER
- 2 EACH REQ'D

2811 1415-1-8-1 04-1-13-101

ON-170-4 PURL INST OPTIONAL

045-1 LEADING EDGE INST.

NOTE A



NOTE A

NOTE

A-8020 DRAG WIRE 2 REQ'D

B-8000 DRAG STRUT

DETAIL

B-A-935 JURY STRUT CROSS TUBE  
BIZ-7000-1 PURL TUBE LEFT WING ONLY

A-8008 FRONT DRIFT FITTING  
B-8001 DRAG STRUT 3 REQ'D

A-8003 DRAG WIRE 8 REQ'D

BIZ-7007 STAYS FIVE 180° WING ONLY

TO EXTEND BEYOND SPAR

1. FRICTION TAPE & SHELLAC - 3" WRAPS  
NOTE B  
AT EACH DRAG STRUT JUNCTION - 5 PLACES

DETAIL B

BIZ-802 BRACE

AN515-4-3 WOOD SCREW 121 REQ'D

AN515-6-16 SCREW  
AN365-632 NUT

AN4-12 BOLT  
AN365-428 NUT  
AN970-4 WASHER  
2 EACH REQ'D

NOTE A  
AN3-14 BOLT  
AN365-1032 NUT  
AN970-3 WASHER  
2 EACH REQ'D

AN4-13 BOLT  
AN365-1032 NUT  
AN970-3 WASHER  
2 EACH REQ'D

NOTE A  
AN3-14 BOLT  
AN365-1032 NUT  
AN970-3 WASHER  
2 EACH REQ'D

NOTE A  
AN3-14 BOLT  
AN365-1032 NUT  
AN970-3 WASHER  
2 EACH REQ'D

NOTE A  
AN4-12 BOLT  
AN365-428 NUT  
AN970-4 WASHER  
2 EACH REQ'D

NOTE A  
B-A-102 CABLE  
B-A-102 CABLE

AN4-12 BOLT  
AN365-428 NUT  
AN970-4 WASHER  
2 EACH REQ'D

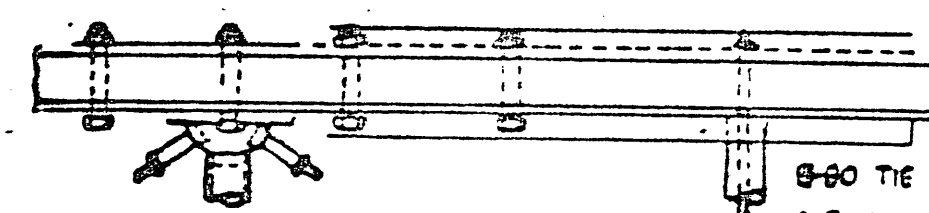
AN3-11 BOLT  
AN365-1032 NUT  
1658 SHIMS REQ'D  
1576 SHIM 13/16 REQ'D

NOTE A  
AN4-12 BOLT  
AN365-428 NUT  
AN970-4 WASHER  
2 EACH REQ'D

AN4-11 BOLT  
AN365-428 NUT  
2 EACH REQ'D

AN970-4 WASHER  
1 REQ'D  
AN4-12 BOLT  
AN365-428 NUT  
2 EACH REQ'D

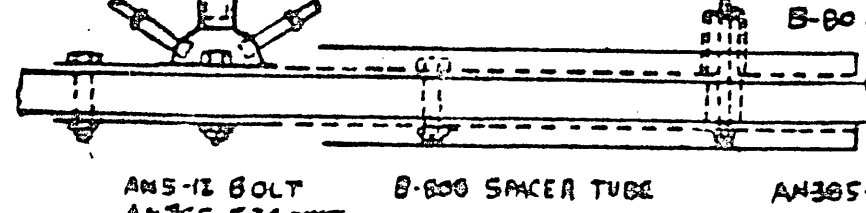
AN4-13 BOLT  
AN365-428 NUT  
5 REQ'D



DETAIL A 1/2 SIZE

B-A-808 FRONT STRUT FITTING  
AN365-640 NUT

AN4-13 BOLT  
AN4-14 BOLT  
AN365-428 NUT - 2 REQ'D



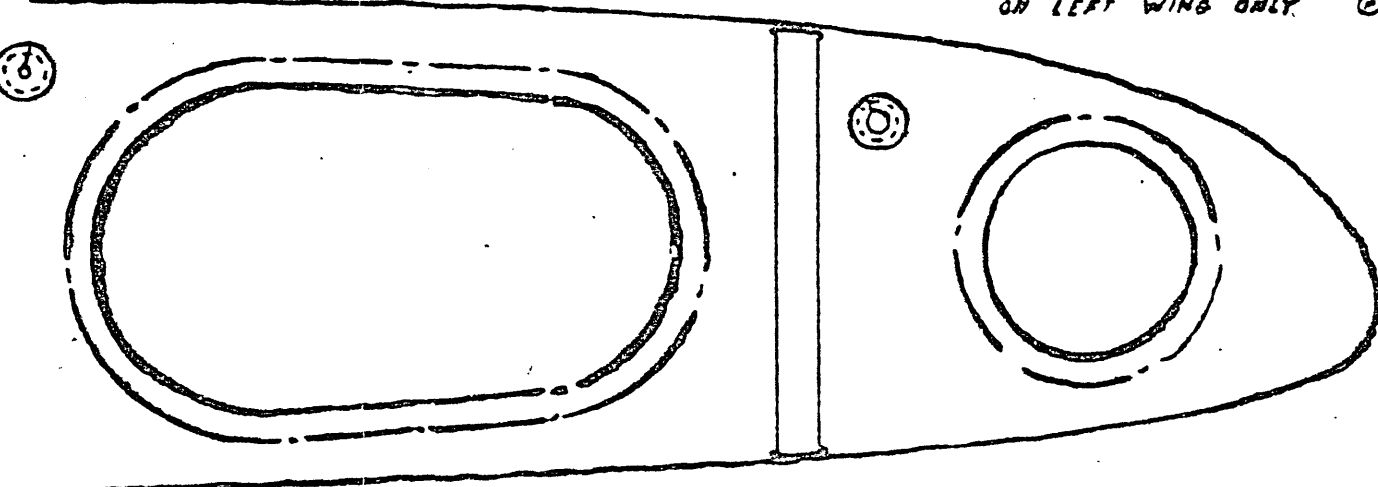
DETAIL B 1/2 SIZE

A-844 (REF. DETAIL A)  
B-80 (REF. DETAIL A)

AN5-12 BOLT  
AN365-524 NUT  
2 EACH REQ'D

B-800 SPACER TUBE  
AN365-640 NUT

AN931-1510 CRIMPET (M) REQ'D



SECTION C 1/2" SIZE

AN931-1510 CRIMPET ON FIRST 3 RIGS. (3) REQ'D OR LEFT WING ONLY.

BIZ-806 SHIM  
A-8007 REAR DRIFT FITTING

FOR PART NO 0856-2 ON BCI20B5  
USE A-8006-1 IN PLACE OF A-8005 1 REQ'D  
B-A-808-2 " " B-A-808 " "  
B-808-2 " " B-808 " "  
B-A-800-1 " " BIZ-800 " "

- △ SHIM BIZ-806 TO BE USED WHEN EVER DRAG STRUT INTERFERES WITH SPAR ANGLE ON RIB.
- △ SHIM B-805 TO BE USED ON ALL RIB DRAG BRACKETS WHEN NEEDED.
- △ 1058 RIBS EQU SPACED BETW REGULAR RIBS EXCEPT WHERE SHOWN OTHERWISE.
- △ EXTEND TUBE OR SPOOL BELOW FABRIC. INSTALL DRAG WIRE ON TOP OF A-811 DRAG WIRE WITHOUT FULL TANK.
- △ A-8728 USED ON LEFT WING AND A-8728-1 USED ON RIGHT OR LEFT WING WITH FULL TANK.
- △ ALTERNATE MATERIAL USE: FINE AND WIDTH FROM 2.5 TO 2.75
- △ ALTERNATE FOR 1513-1 BRACKET IS B-A-808 AND ATTACHING PARTS. ALT FOR AN3-11 BOLT IS AN3-11, FOR AN3-12 IS AN3-12, FOR AN3-7 IS AN3-7. ALT FOR 1513-3 BRACKET IS B-A-809 AND ATTACHING PARTS. ALT FOR AN3-19 BOLT IS AN3-19 MINIMUM CLEARANCE 85° WITH DRAG WIRE. 1 RIB CUT OUTS TO EDGE OF WEB MAY BE DEPT TO PROVIDE THIS.
- △ BIZ-802 BRACE BOTTOM OF WING WITH TANK ONLY. 2 REQ'D REQUIRED WHEN VALVE 103-ND IS USED.
- △ WELD THIS END OF TUBES WITH MASKING TAPE TO PROTECT FROM PAINT.
- △ PAINT THIS END RED ON LONG TUBE ONLY.
- △ BIZ-1 WIRE ASSEMBLY ALTERNATE FOR A-8728 WIRE ASSEMBLY WHEN BOW 0922-1 IS USED FOR CRIMPERS MODE E 0900-110 B 0900-111 WING LIGHTS.
- △ WHEN BOW HAS WELDED WIRE. ADD 1-AN315-5-16 SCREW, 1-AN515-4-3 WOOD SCREW - 632. BIZ-807 WIRE ROD AND PULLEY WIRE WING TANK IS INSTALLED 13 IN TO 3110 OR BRACKET ARE USED AND ONE AN515-10-10 IS USED TO LIGHT WIRE DISTA AROUND TANK.

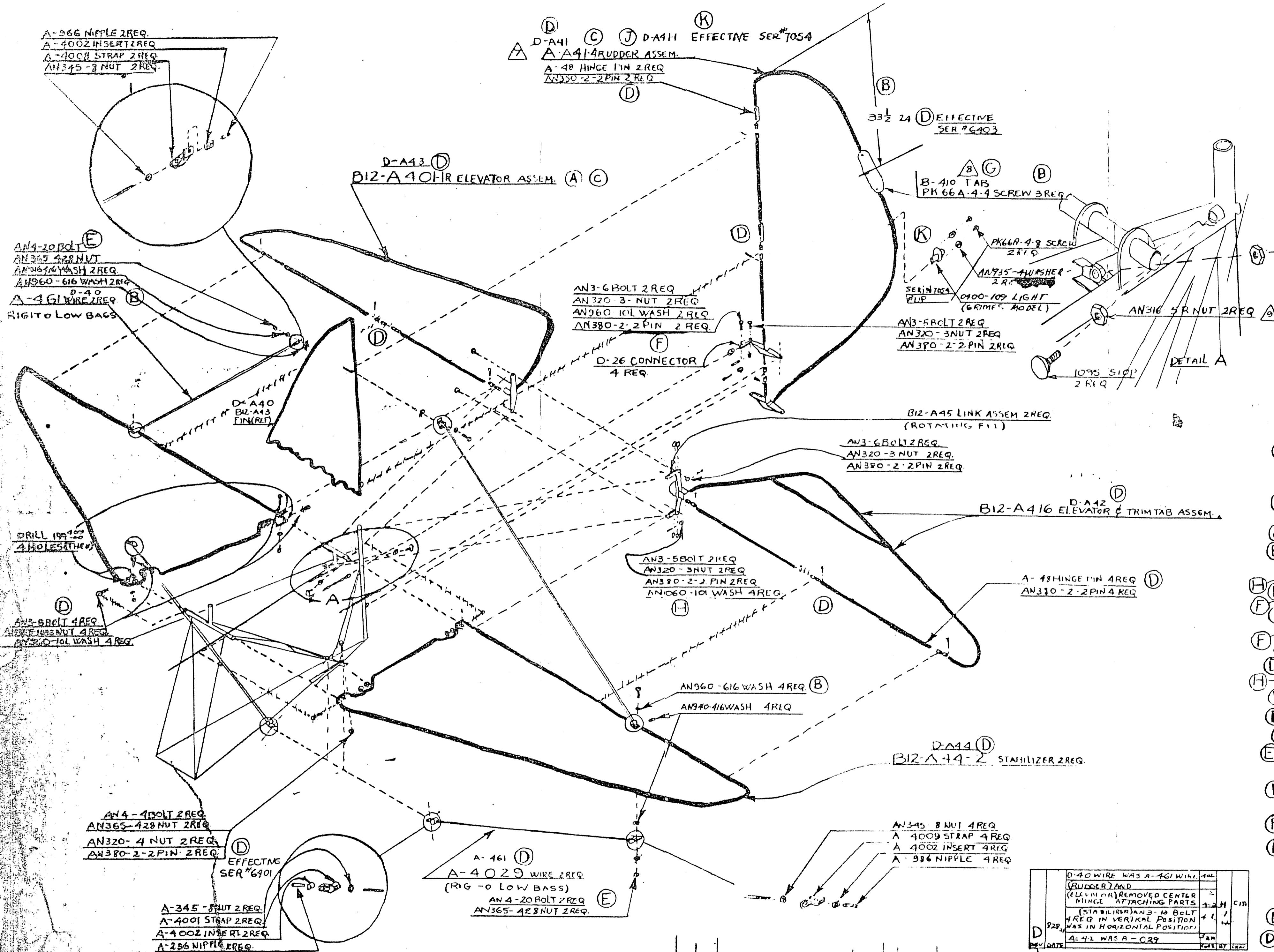
- 0853-3 BOLT AND NUT
- BIZ-7001 1 STAY TUBE
- BIZ-7001 3 FRONT SET BRACKET
- 1658 SHIM
- 1576 SHIM
- BIZ-802 BRACE
- BIZ-802-1 SCREW
- BIZ-104 1 PURL INST
- 0949-1 1 AL BAT INST
- 1616 10 PLATE
- 0881-12 1 RIB TIE INST
- 0421-12 1 LE COVER INST
- AN970-4 WASHER
- AN970-3 7 WASHER
- 0816 200
- AN365-524 2
- 0831-027 2
- AN365-428 9
- AN970-3 2
- AN515-410 1 NUT
- AN365-22 1 PIN
- AN365-4 3 WASH SCREW
- AN365-4 3 WASH SCREW
- AN4-11 1
- AN4-12 1
- AN3-12 1
- AN4-13 1
- AN4-13 1
- AN4-12 1
- AN3-11 1
- AN3-7 1
- AN3-7 1
- AN3-7 1 BOLT
- 4-215 2 BUSHING
- A-8009 2 NIPPLE
- A-8020 2 DRAG WIRE
- A-8003 2 DRAG WIRE
- A-8004 1 TIE ROD
- A-8007 1 REAR DRIFT FITTING
- A-8036 1 TIE ROD
- A-8726 2 LIGHT WIRE
- B-875 2 SHIM
- B-809 1 SHIM
- B-800 1 TIE ROD TUBE
- B-8035 1 PLATE
- B-8009 13 1 TIE ROD
- 1533-2 2 BRACKET ASSEMBLY
- 1533-2 2 BRACKET ASSEMBLY
- 1533-2 2 BRACKET ASSEMBLY
- B-8009 1 DRAG STRUT END
- B-8009 1 REAR SPAR END
- B-1002 1 CABLE ASSEMBLY
- B-8008 1 TIE ROD TUBE
- BIZ-802 1 TIE ROD
- BIZ-800 1 SHIM
- 0829-1 1 SHIM
- 0829-1 1 SHIM
- 0829-1 1 SHIM
- 0829-1 1 SHIM
- 0829-1 1 SHIM

4-215 BUSHING



NOTES: 1. FOR A-41 ONLY, WASHES OR C.A. APPROVED  
 2. WHERE AN AN OR BOLT OR NUT IS CALLED FOR, THE PARTS LIST SHOULD BE USED  
 3. SPEC. NO. AND PART NO. SHOULD BE USED  
 4. ALL PARTS TO LATEST REV. UNLESS OTHERWISE SPECIFIED  
 5. ALL PARTS TO BE USED UNLESS OTHERWISE SPECIFIED

ALTERNATIVE TAIL SURFACES:  
 A-A 11-4 RUDDER  
 B12-A 43 PIN (REF.)  
 B12-A 44-2 STABILIZER  
 B12-A 401-1R ELEVATOR  
 B12-A 416 ELEVATOR & TRIM TAB  
 RUDDER TRIM TAB MAY BE INSTALLED ON LEFT OR RIGHT SIDE OF RUDDER.  
 WHEREVER AN PARTS ARE CALLED ON THIS DWG EQUIV. PARTS MAY BE USED.



REV	DATE	DESCRIPTION	BY	CHKD
K	27	CHANGES TAIL LIGHT ATTACHMENT PARTS EFF SER# 7054 APPROV.	F	
J	7	CHANGED A-41 WAS D-MISER BC 3721	F	
H		ADDED NOTE 9		
H		ADDED DETAIL A 1095 STOP, AN316 5/8 NUT		
G		ADDED NOTE 9 RO 3630		
F	11	ADDED AN3-6 BOLT 2 REQ, AN320-3 NUT 2 REQ, AN390-2-2 PIN 2 REQ, AN390-2-2 PIN 4 REQ	E	
E	11	ADDED AN3-5 BOLT 2 REQ, AN320-3 NUT 2 REQ, AN390-2-2 PIN 2 REQ	E	
D	11	ADDED AN3-6 BOLT 2 REQ, AN320-3 NUT 2 REQ, AN390-2-2 PIN 2 REQ	E	
C		ADDED AN3-5 BOLT 2 REQ, AN320-3 NUT 2 REQ, AN390-2-2 PIN 2 REQ	E	
B		ADDED AN3-6 BOLT 2 REQ, AN320-3 NUT 2 REQ, AN390-2-2 PIN 2 REQ	E	
A		ADDED AN3-5 BOLT 2 REQ, AN320-3 NUT 2 REQ, AN390-2-2 PIN 2 REQ	E	

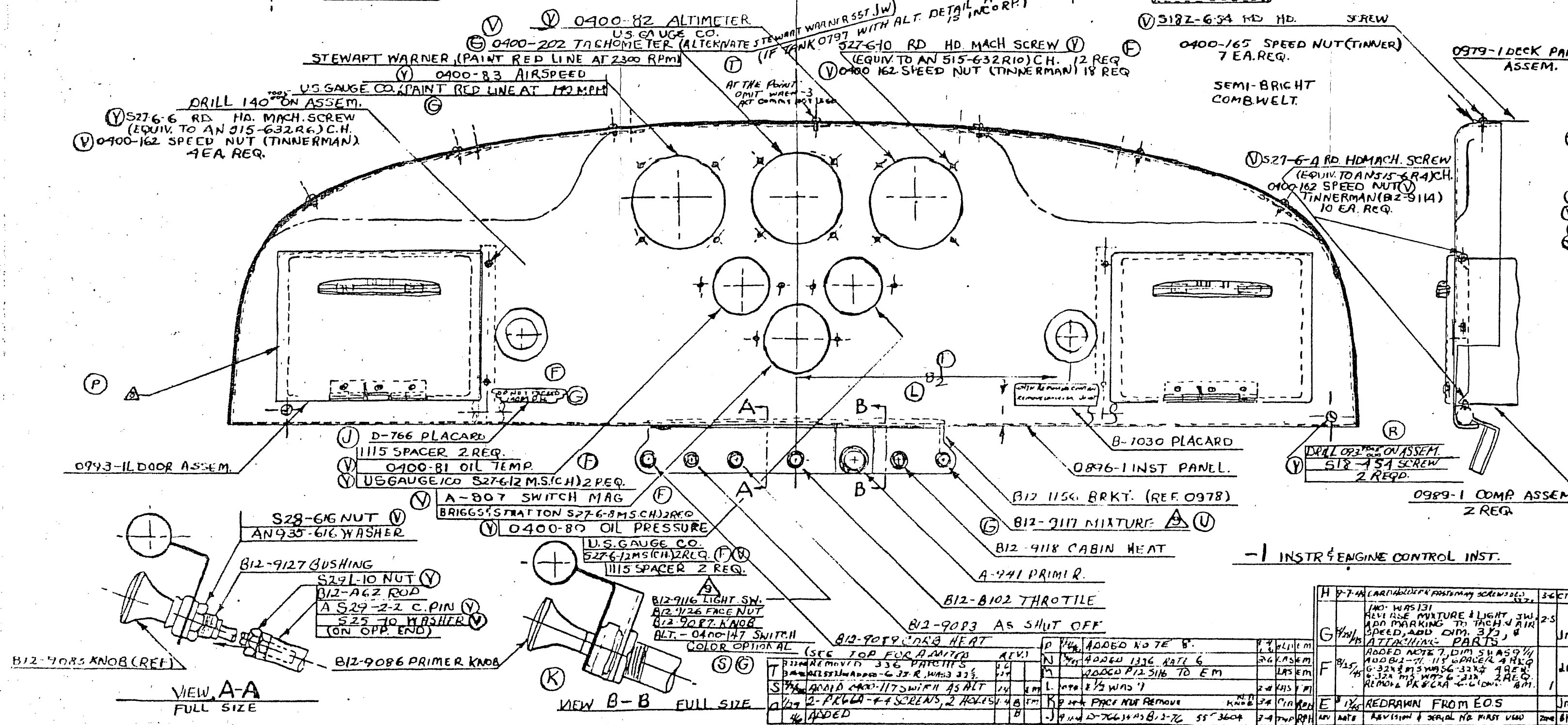
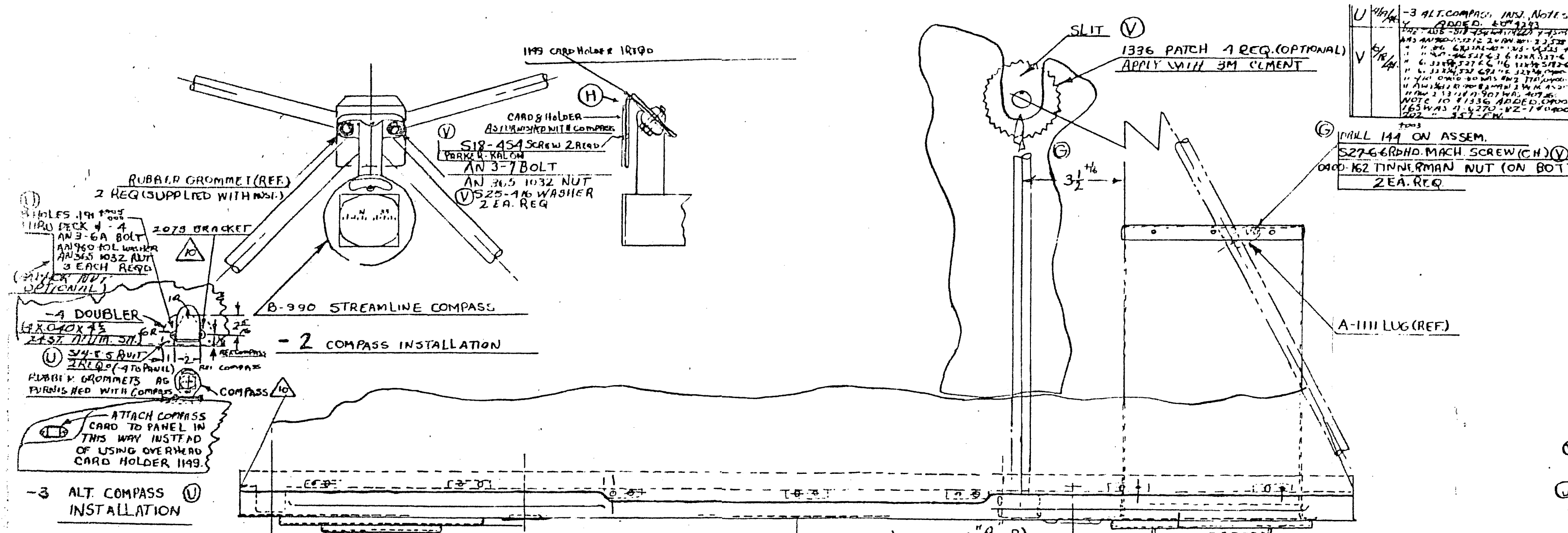
  

REV	DATE	DESCRIPTION	BY	CHKD
649521				
04919				
0495				

REV	DATE	DESCRIPTION	BY	CHKD
649521				
04919				
0495				

REV	DATE	DESCRIPTION	BY	CHKD
K	27	CHANGES TAIL LIGHT ATTACHMENT PARTS EFF SER# 7054 APPROV.	F	
J	7	CHANGED A-41 WAS D-MISER BC 3721	F	
H		ADDED NOTE 9		
H		ADDED DETAIL A 1095 STOP, AN316 5/8 NUT		
G		ADDED NOTE 9 RO 3630		
F	11	ADDED AN3-6 BOLT 2 REQ, AN320-3 NUT 2 REQ, AN390-2-2 PIN 2 REQ, AN390-2-2 PIN 4 REQ	E	
E	11	ADDED AN3-5 BOLT 2 REQ, AN320-3 NUT 2 REQ, AN390-2-2 PIN 2 REQ	E	
D	11	ADDED AN3-6 BOLT 2 REQ, AN320-3 NUT 2 REQ, AN390-2-2 PIN 2 REQ	E	
C		ADDED AN3-5 BOLT 2 REQ, AN320-3 NUT 2 REQ, AN390-2-2 PIN 2 REQ	E	
B		ADDED AN3-6 BOLT 2 REQ, AN320-3 NUT 2 REQ, AN390-2-2 PIN 2 REQ	E	
A		ADDED AN3-5 BOLT 2 REQ, AN320-3 NUT 2 REQ, AN390-2-2 PIN 2 REQ	E	

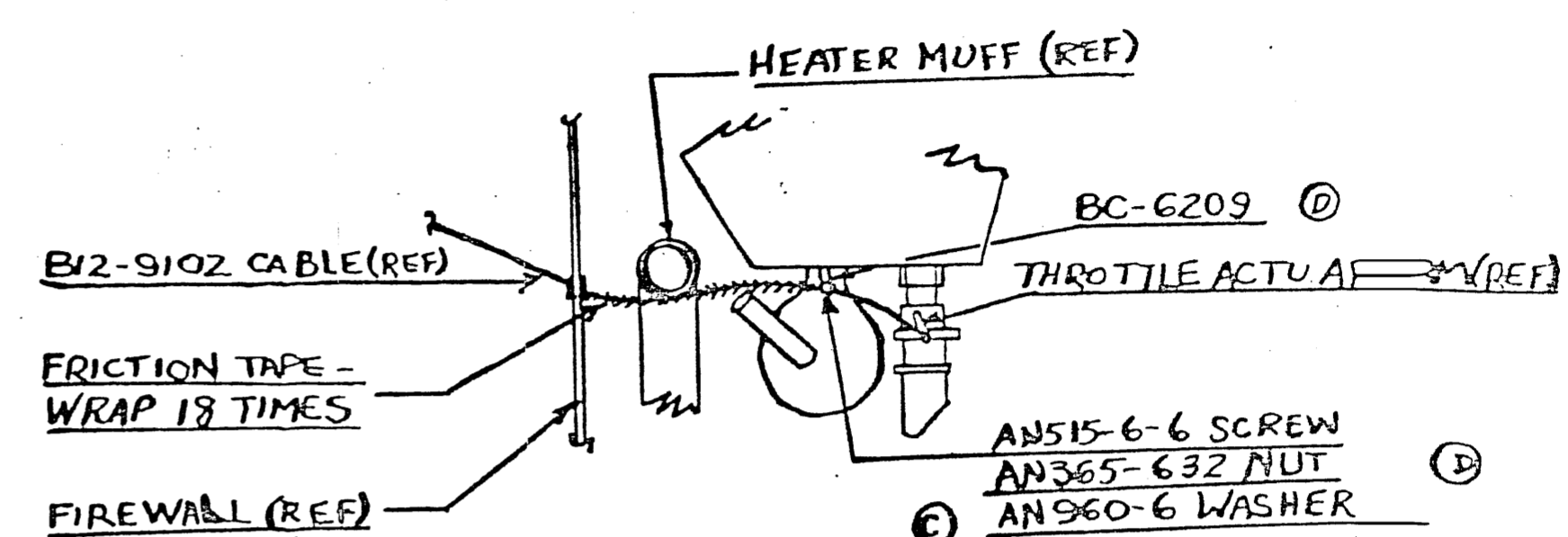
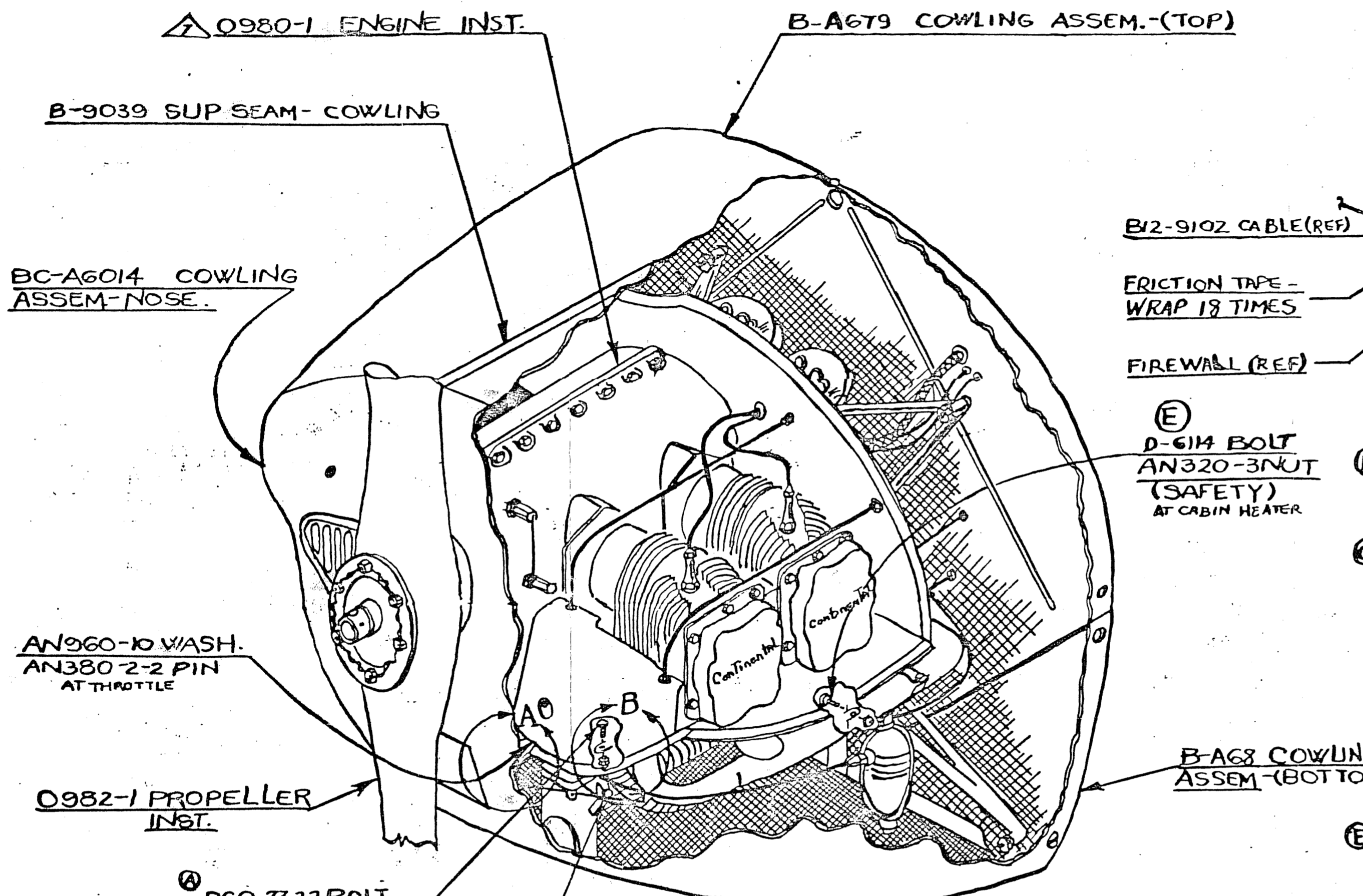


U	-1	1336	4	PATCH
V	-1	132-7116	1	LIGHT SWITCH
V	-2	S18-454	2	SCREW
V	-2	1149	1	BRACKET
V	-1	1115	1	SPACER
V	-1	D-766	1	PLACARD
V	-1	0896-1	1	INST. PANEL
V	-1	S25-10	1	WASHER
V	-1	S27-28	1	C PIN
V	-1	AN356	1	WASHER
V	-1	S28-6	1	NUT
V	-1	0923-1	1	DOOR ASSEMBLY
V	-1	0989-1	2	COMPART. ASSY.
V	-1	0979-1	1	DECK PANEL ASSY.
V	-1	S28-10	1	NUT
V	-2	S25-10	2	WASHER
V	-1	0400-165	7	SPEED NUT
V	-2	0400-162	34	SPEED NUT
V	-2	AN356	2	NUT
V	-1	S27-6	10	SCREW
V	-1	S27-6	2	MACH. SCREW
V	-1	S27-6	12	MACH. SCREW
V	-1	S27-6	6	MACH. SCREW
V	-1	S27-6	7	SCREW
V	-1	S27-6	4	MACH. SCREW
V	-1	AN3-7	2	BOLT
V	-2	B-990	1	COMPASS
V	-1	0894	1	DOOR ASSEMBLY
V	-1	0400-80	1	OIL PRESSURE
V	-1	0400-82	1	ALTIMETER
V	-1	0400-83	1	AIRSPEED
V	-1	0400-81	1	OIL TEMP.
V	-1	A-907	1	SWITCH MAG.
V	-1	0400-202	1	TACHOMETER
V	-1	B12-9087	1	KNOB
V	-1	B12-A62	1	ROD ASSEM.
V	-1	B12-912	1	BUSHING
V	-1	B12-916	1	FACE NUT
V	-1	B12-918	1	CABIN HEAT
V	-1	B12-917	1	MIXTURE
V	-1	B12-910	1	THROTTLE
V	-1	B12-9089	1	CARB. HEAT
V	-1	B12-9086	1	PRIMER KNOB
V	-1	B12-9085	1	GAS STUD
V	-1	B12-924	1	BUTTON
V	-1	B-7030	1	PLACARD
V	-1	A-941	1	PRIMER
V	-2	0894-1	2	COMPASS INST.
V	-1	0895-1	1	INST. ENGINE INST.

H	7-4	ADD WASHER	2-5	JM
G	7-5	ADD MARKING TO TACH. AIR SPEED, ADD DIM. 3/2"		JM
F	7-6	ATTACHING PARTS		JM
E	7-7	REDRAWN FROM EOS		JM

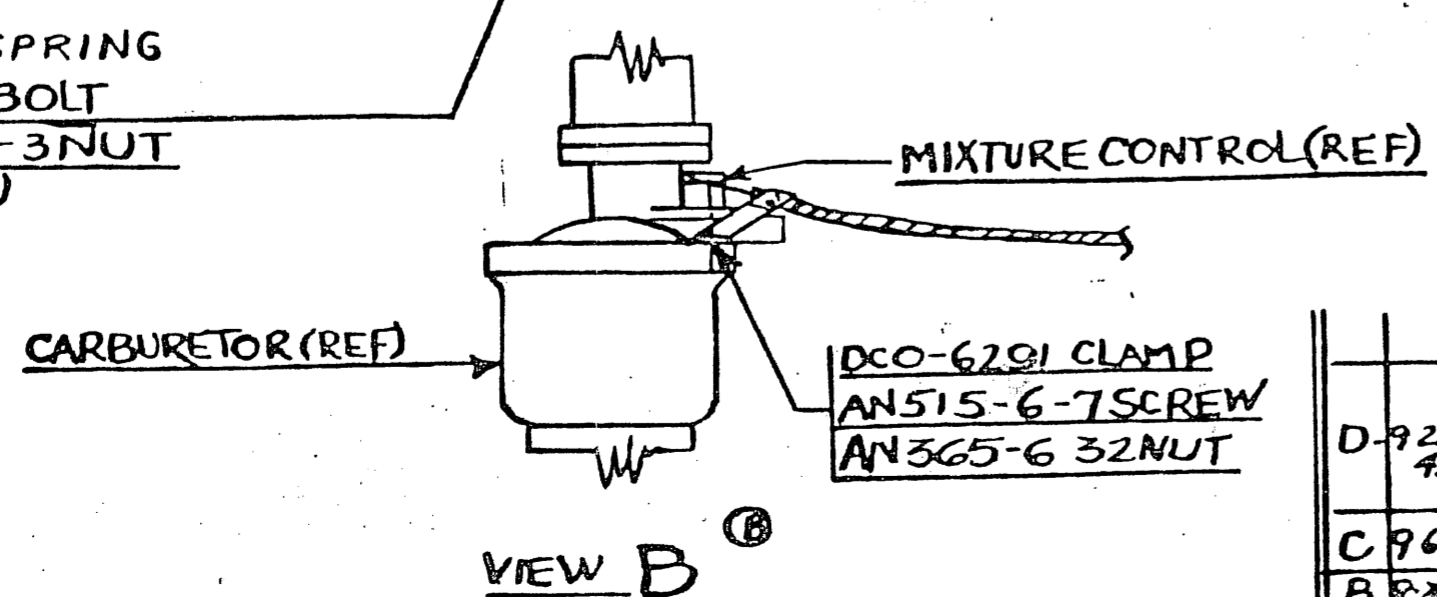
TAYLORCRAFT AVIATION CORP., ALLIANCE CO.  
 INSTRUMENT & ENGINE CONTROL INSTALLATION 0894

NOTES: 1. FOR C.A.A. REF. ONLY, PART IS OR C.A.A. APP. EQUIV.  
 2. WHENEVER AN OR EQUIV. BOLT & SCREW IS CALLED OUT \*  
 MATCHING AN OR EQUIV. WASHERS (U. MAX.) MAY BE USED \*  
 3. SPEC. NO. AND FINISH NO. ARE TYPE STANDARD A  
 4. ALL FIN. SPECS TO LATEST REVISIONS.  
 5. APOSTROPHES - UNLESS OTHERWISE STATED.  
 6. ALL SAFETY TO SPEC. NO. 112 OR TO MFG. SECT.  
 7. INSTALLATION 0868-2, ADDL. 0868-1  
 USE 0580-2 INSTEAD OF 0980-1



VIEW A  
FROM OPP SIDE

F		B-669	1	SPRING
		AN960-6	1	WASHER
		AN515-6-6	1	SCREW
		BC-6209	1	CLAMP
G		COMMERCIAL FRICTION TAPE	1/2	X25
		AN760-10	1	WASH.
		AN380-2-2	1	PIN
				0868
		AN320-4	1	
		AN365-6-32	2	
		AN320-3	2	NUT
		AN515-6-7	1	SCREW
		DCO-7322	1	
E		D-6114	2	BOLT
		0982-1	1	PROPELLER
		BC-A6014	1	COU-16-NOSE
		B-A679	1	COU-16-ASSEM-TOP
		0980-1	1	ENGINE INST.
		DCO-6209	1	CLAMP
		B-A681	1	COU-16-BOT.
		B-9039	1	SUP SEAM
		0868-1		
		0863-1		
		0868-1		INST.

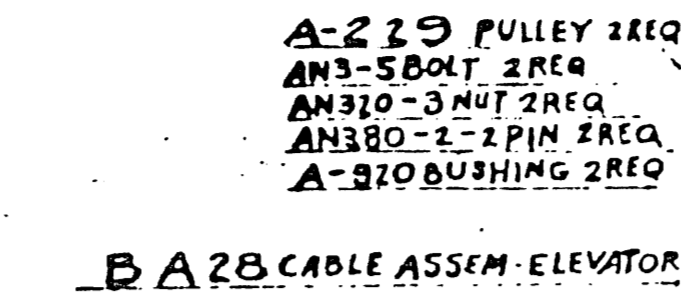
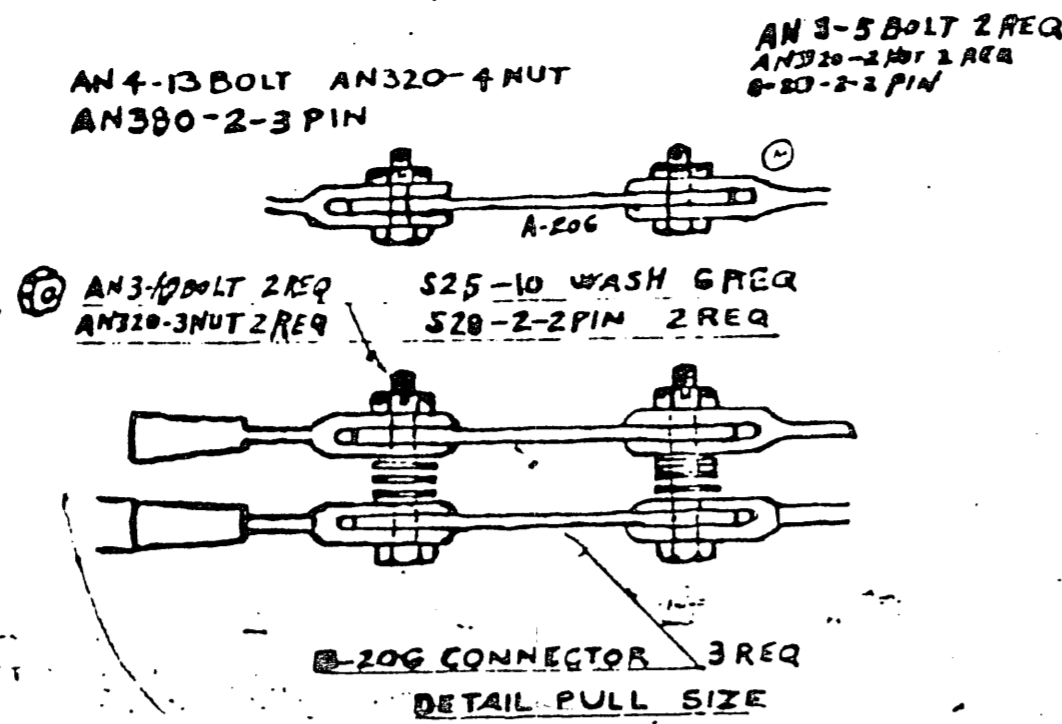
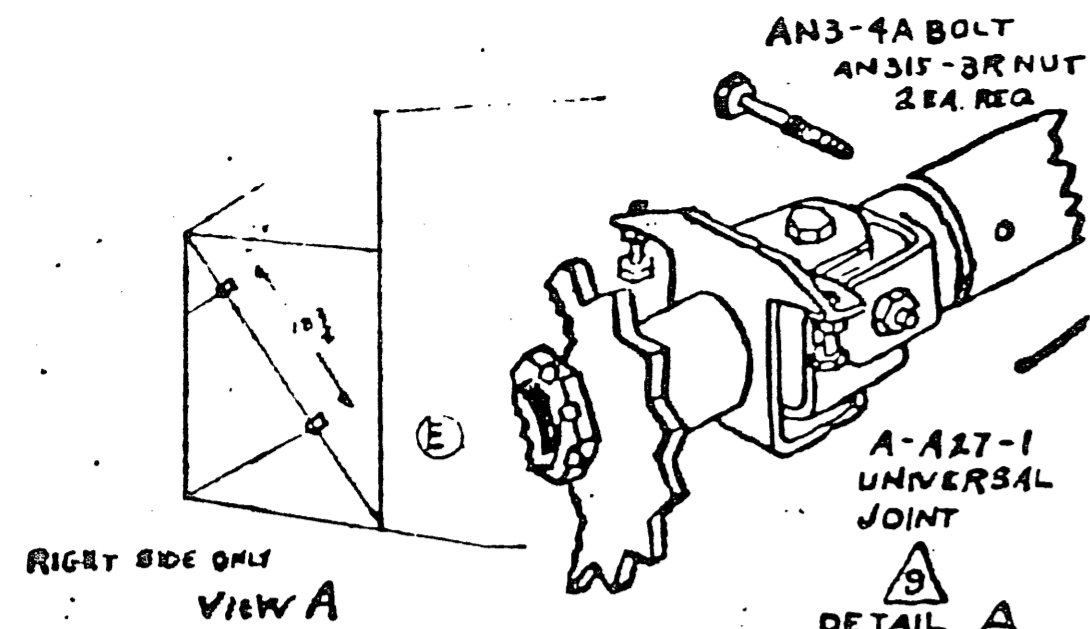


VIEW B

D-922 45	AN960-6 WASHER ADDED CALLOUT 1/4 (03558)	1-9	TREM
C 964	ADDED VIEW-A ADDED TO NOTE 6	1-4	T.P. EM
B 824	ADDED DCO-6209 AN515-6-7 AN365-6-32 ADDED VIEW A FOR 3108	2-3	T.B. EM
A 8224	DCO-7322 WAS AN4-4 INCORPORATED 3107	2-3	T.P. EM

TAYLORCRAFT AVIATION CORP., ALL RIGHTS RESERVED  
 POWER PLANT  
 0868-1





THESE CABLES ATTACH TO  
EMPENNAGE INSTAL. 04971

A-228 PULLEY 4REQ  
A-920 BUSHING 4REQ  
AN3-6 BOLT 4REQ  
AN320-3 NUT 4REQ  
AN380-2-2 PIN 4REQ

A-27 UNIVERSAL JOINT  
AN4-10 BOLT  
AN320-4 NUT

AN380-2-2 PIN  
A-230-1 SPROCKET  
A-900 KEY  
AN320-3 NUT  
AN380-3-3 PIN 1REQ

A-228 PULLEY 2REQ  
AN3-10 BOLT 2REQ  
AN310-3 NUT 2REQ  
AN380-2-2 PIN 2REQ  
AN920 BUSHING 2REQ  
AN380-2-2 PIN 2REQ

AN316-636  
AN900-6 (2)  
AN320-8 NUT  
RIGHT SIDE ONLY

A-228 PULLEY 2REQ  
AN3-2 BOLT 2REQ  
AN320-3 NUT 2REQ  
AN380-2-2 PIN 2REQ  
AN920 BUSHING 2REQ

AN3-10 BOLT 2REQ  
AN320-3 NUT 2REQ  
AN380-2-2 PIN 2REQ

A-228 PULLEY 2REQ  
AN229 PULLEY  
AN3-17 BOLT  
AN320-3 NUT  
AN380-2-2 PIN  
AN920 BUSHING 3REQ

B-A25 PEDAL ASSEM  
2REQ  
AN311-29 PIN (FLAT HD.) 2REQ  
AN416-22 PIN (SAFETY) 2REQ

A-229 PULLEY AN3-5 BOLT AN320-3 NUT AN380-2-2 PIN A-920 BUSHING  
A-248 BUSHING 2REQ AN3-9 BOLT 2REQ AN320-3 NUT 2REQ AN380-2-2 PIN 2REQ

B-A21 BAR ASSEM L. A-1089 BEARING HOUSING 2REQ AN3-10 NUT 2REQ AN320-3 NUT 2REQ AN3-10 BOLT 2REQ AN3-4 BOLT 8REQ AN320-3 NUT 10REQ AN380-2-2 PIN

A-240 COIL SPRING 2REQ

B-A20 BAR ASSEM R.

B12-A21 CABLE ASSEM

THESE CABLES ATTACH TO  
WING INSTAL. 0482-1

B-206 CONNECTOR 3REQ  
DETAIL PULL SIZE

B-A29 CABLE ASSEM-ELEVATOR

B-A28 CABLE ASSEM-ELEVATOR

B-A26-1 CABLE ASSEM  
RUDDER - RIGHT

A-146 BUSHING 6REQ  
Q476 CLIP SPRING 12REQ

A-250 RUBBER CHANNEL 4REQ

A-251 RUBBER CHANNEL 4REQ

B-A27-1 CABLE ASSEM. RUDDER LEFT

B-155 GUIDE 4REQ AN3-7 BOLT 4REQ AN320-3 NUT 4REQ  
AN380-2-2 PIN 4REQ

B12-A23 WHEEL ASSEM. CONTROL 2REQ

B-154 GUIDE 4REQ AN5-7 BOLT 4REQ AN320-3 NUT 4REQ AN380-2-2 PIN 4REQ

A-248 BLOCK 2REQ A-55-6-14 MACH. SCREW 4REQ AN335-6 WASH 4REQ AN340-6 NUT 8REQ

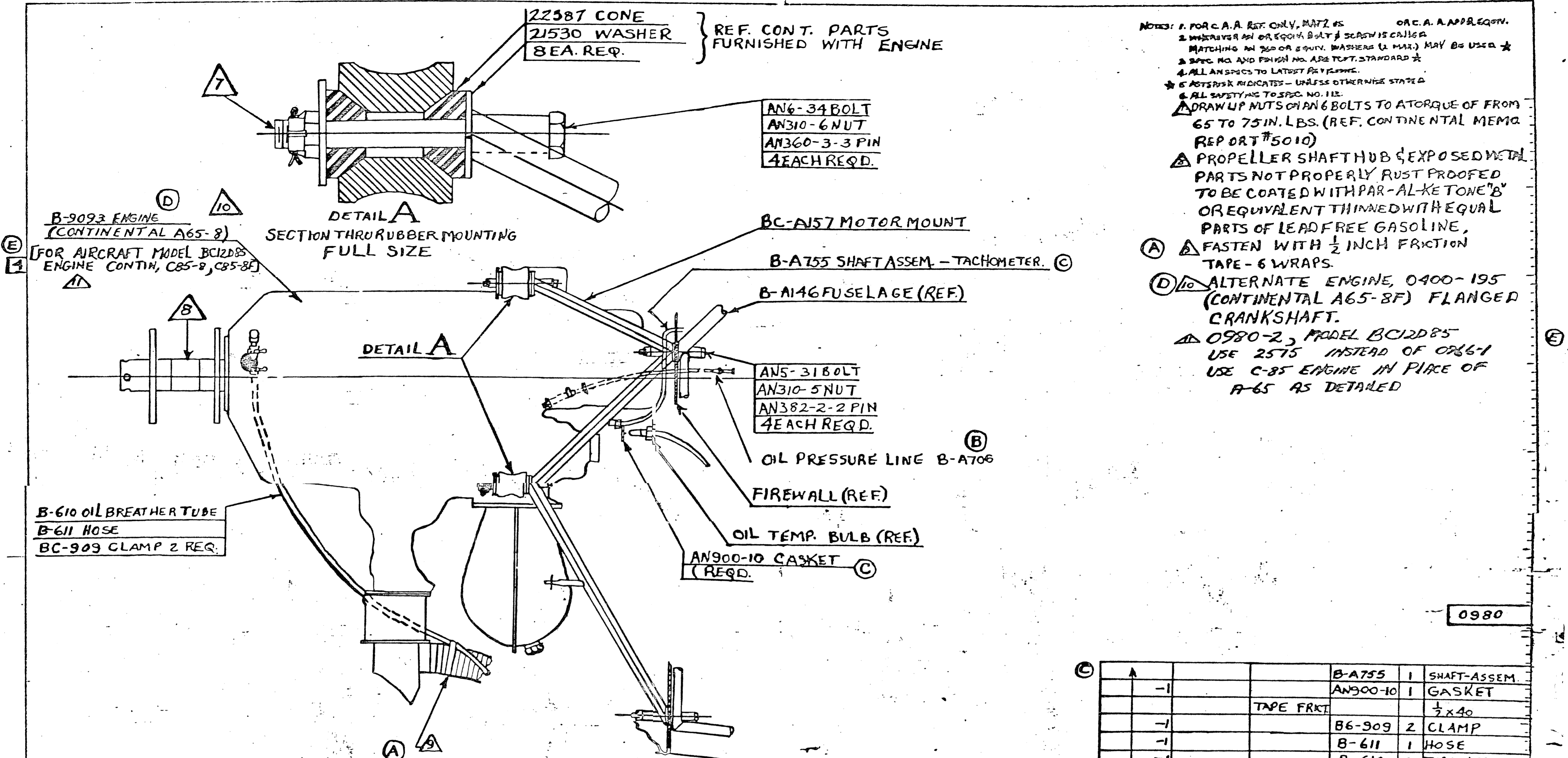
A-A23 SPROCKET ASSEM AN320-8 NUT AN380-3-3 PIN A-903 KEY

A-229 PULLEY 4REQ AN3-5 BOLT 4REQ AN320-3 NUT 4REQ AN380-2-2 PIN 4REQ A-920 BUSHING 4REQ

B-A22-2 B-A22 CONTROL COLUMN ASSEM B-27 CLAMP 2REQ B-224 SHIM 1REQ

AN3-4 BOLT 4REQ  
AN310-3 NUT 4REQ  
AN960-10 WASH 4REQ  
AN380-2-2 PIN 4REQ

- AN5-11 2 NUT
- AN4-3 2 BOLT
- A-A27-1 1 UNIVERSAL JOINT
- AN960-10 1 WASHER
- AN315-6 4 WASHER
- AN55-6-14 4
- AN320-3-3 4
- AN320-2-3 3
- AN320-2-2 13 PIN
- AN340-6 3
- AN320-8 2
- AN320-4 2
- AN320-3 40
- AN30-3 4 NUT
- AN416-22 2 4 (SAFETY)
- AN320-29 2 PIN (SAFETY)
- AN4-13 2
- AN3-5 4
- AN960-6 2 WASHER
- AN3-10 4
- AN3-7 12
- AN3-6 6
- AN3-8 9
- AN3-4 12 BOLTS
- AN515-6 1
- B12-A2 1 CABLE ASSEM
- B-224 4 SHIM
- A-A27 1 UNIVERSAL
- B-206 2 CONNECTOR
- B-155 4
- B-154 4 GUIDE
- B901-1 1 BUMPER
- B-A23 1
- B-A28 1
- B-A27-1 1 CABLE ASSEM
- B-27 2 CLAMP
- B-A26-1 1 CABLE ASSEM
- B-A25 2 PEDAL ASSEM
- B-A22-2 1 CONTROL ASSEM
- B-A21 1 BAR ASSEM
- B-A20 1 BAR ASSEM
- A-25 1 4
- A-250 4 RUBBER CHANNEL
- A-1089 2
- A-1088 2 BEARING HOUSING
- A-320 10 BUSHING
- A-303 2 KEY
- A-248 2 BLOCK ASSEM
- A-240 2 COIL SPRING
- A-A23 1 SPROCKET ASSEM
- A-100-1 8 SPROCKET ASSEM
- A-229 5 PULLEY
- A-228 10 PULLEY
- A-146 6 BUSHING
- A-28 2 CLIP SPRING
- Q476 12 CLIP SPRING
- B-A23 2 WHEEL ASSEM



- NOTES: 1. FOR C.A. REF. ONLY, MATZ #5 O.R.C. A. APPROPQ. V. 2. UNLESS OTHERWISE SPECIFIED, ALL BOLTS & NUTS SHALL BE CALLED BY MATCHING AN OR EQUIV. WASHERS (2 MAX.) MAY BE USED. 3. SPEC. NO. AND FINISH NO. ARE TO CT. STANDARD. 4. ALL AN PARTS TO LATEST REV. 5. \* ACTS IN K. INDICATES - UNLESS OTHERWISE STATED. 6. ALL SAFETY WIRE TO SPEC. NO. 112. 7. DRAW UP NUTS ON AN 6 BOLTS TO A TORQUE OF FROM 65 TO 75 IN. LBS. (REF. CONTINENTAL MEMO REPORT #5010) 8. PROPELLER SHAFT HUB EXPOSED W/TA PARTS NOT PROPERLY RUST PROOFED TO BE COATED WITH PAR-AL-KETONE "B" OR EQUIVALENT THINNED WITH EQUAL PARTS OF LEAD FREE GASOLINE. 9. FASTEN WITH 1/2 INCH FRICTION TAPE - 6 WRAPS. 10. ALTERNATE ENGINE, 0400-195 (CONTINENTAL A65-8F) FLANGED CRANKSHAFT. 11. 0980-2, MODEL BC12DB85 USE 2575 INSTEAD OF 0966-1 USE C-85 ENGINE IN PLACE OF A-65 AS DETAILED.

0980

REV.	DATE	REVISION	BY	CHKD.	QTY.	UOM.	STG.	KIND.	RUSH.	PART NO.	UNIT.	W.T. XL.
										B-A755	1	SHAFT-ASSEM.
										AN900-10	1	GASKET
										TAPE FRKT		1/2 x 40
										B6-909	2	CLAMP
										B-611	1	HOSE
										B-610	1	TUBE-OIL BREATHER
										B-A706	1	OIL PRESS. LINE
										BC-A157	1	MOUNT
										AN380-3-3	4	PIN
										AN380-2-2	4	PIN
										AN310-6	4	NUT
										AN310-5	4	NUT
										AN6-34	4	BOLT
										AN5-31	4	BOLT
										BC-L637	1	COOLING INSTALE
										BC-L630	1	AT EX STACK INST.
										B-9093	1	ENGINE-CONT.
	0980-1									0966-1	1	FUEL INSTALL.
	0868-1									0990-1	1	ENGINE INSTALL.

REV.	DATE	REVISION	SERIAL NO. FIRST USED	ZONE	BY	CHKD.	MODEL NO.	REV.
E	1/31/48	MODEL BC12DB85 & CONTINENTAL C85-8 & C85-8F ADDED			24	KT/HN		
D	5/27/48	B-9093 WAS A-65-B NOTE 10 ADDED			1-3	AK EM		
C	7/29/48	ADD. B-A755			7-24	CIB CJA		
B	11/30/48	ADD OIL TEMP BULB & AN900-10			1-4	JAS CIA		
A	9-4-48	B-A706 WAS DCA7081-EO 9399			1-4	LAC CIA		
		REVISED DWG OF BREATHER LINE & ADDED NOTE 9			2-4	LDS EM.		

LIMITS ON DIMS					NO. HAND FINISH	NIGHT TIGHTENING	SUPPLY	STG.	DATE	DATE
FRACTION	DEC.	DIG.	MIN.	MAX.	BY	BY	BY	BY	BY	BY

HARD FINISH  
 NIGHT TIGHTENING  
 SUPPLY  
 STG.  
 DATE

TAYLORCRAFT AVIATION CORP., ALLIANCE O.  
 ENGINE INSTALLATION  
 CONTINENTAL A-65 & C85

0980