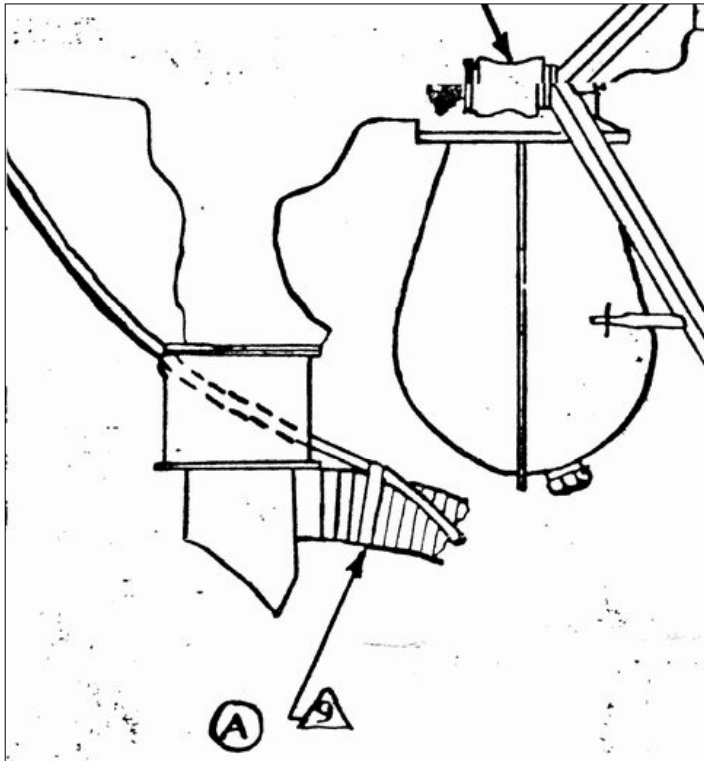


Oil breather tube



Ⓐ △ FASTEN WITH $\frac{1}{2}$ INCH FRICTION TAPE - 6 WRAPS.

◀ The Taylorcraft factory engine installation drawing no. 0980 from 1945 specifies that the crankcase oil breather tube should be lashed to the carburetor heat duct with six wraps of 1/2 inch friction tape.



◀ So that's exactly what I did. The friction tape is coated with black gasket shellac to protect it from engine oil.