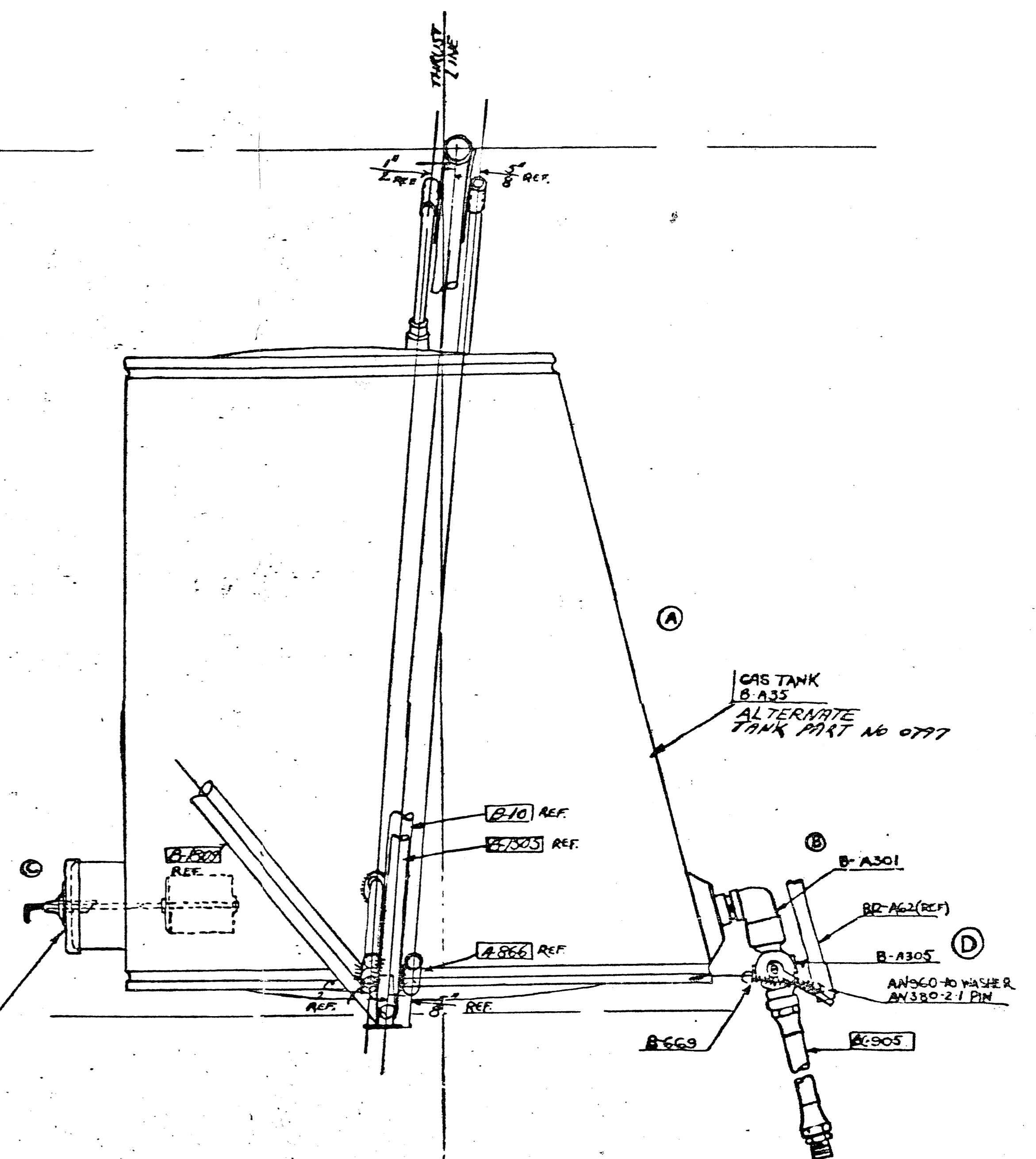
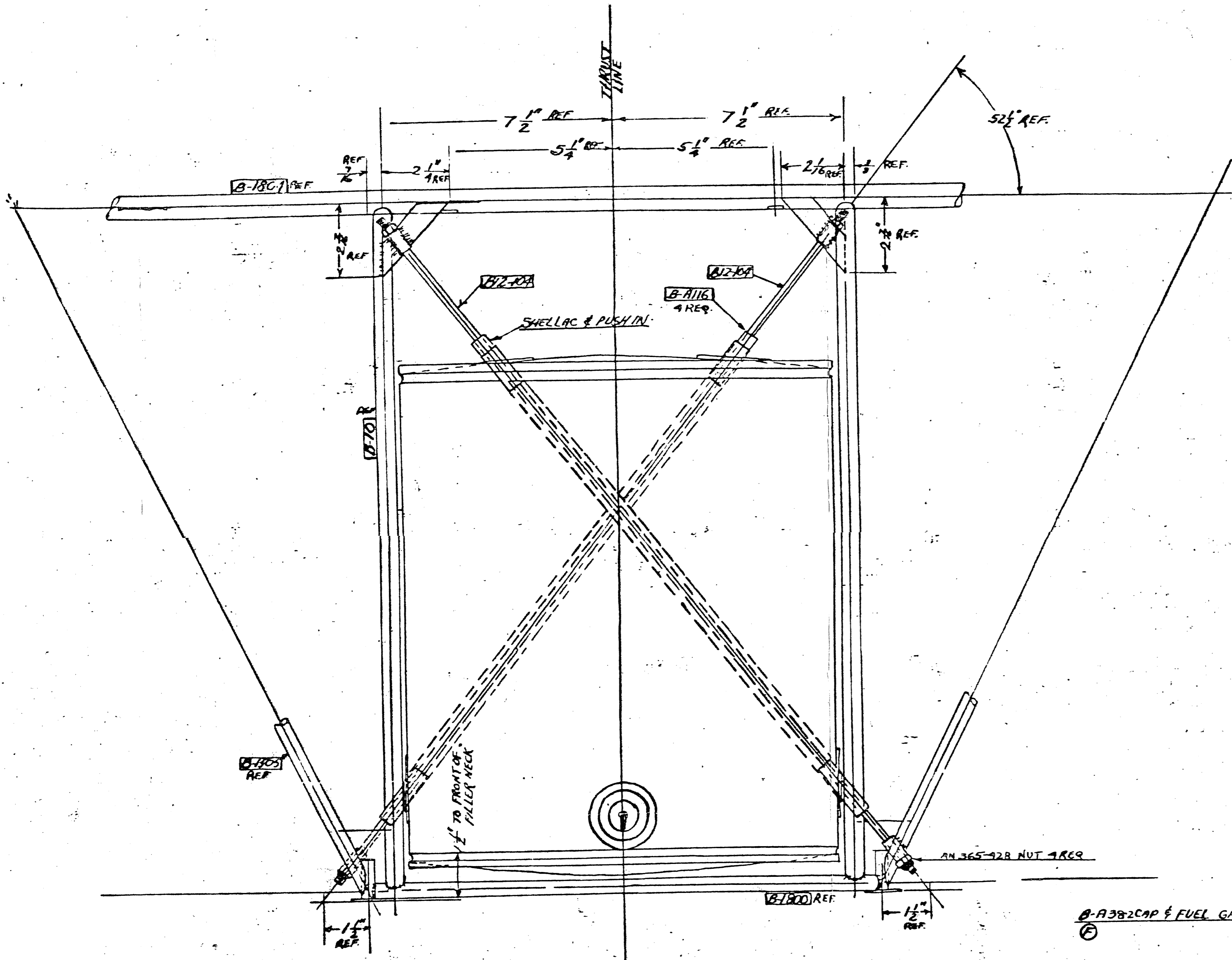


NOTES: 1. FOR A & B ONLY MODEL...  
 2. MAXIMUM...  
 3. SPEC...  
 4. ALL...  
 5. REF...  
 6. REF...  
 7.



① INSTALLATION DWG B12-1108-1 FOR MODEL BC12D85  
 USE PART NO 2576 IN PLACE OF BC-905  
 ALL OTHER PARTS SAME AS B12-108

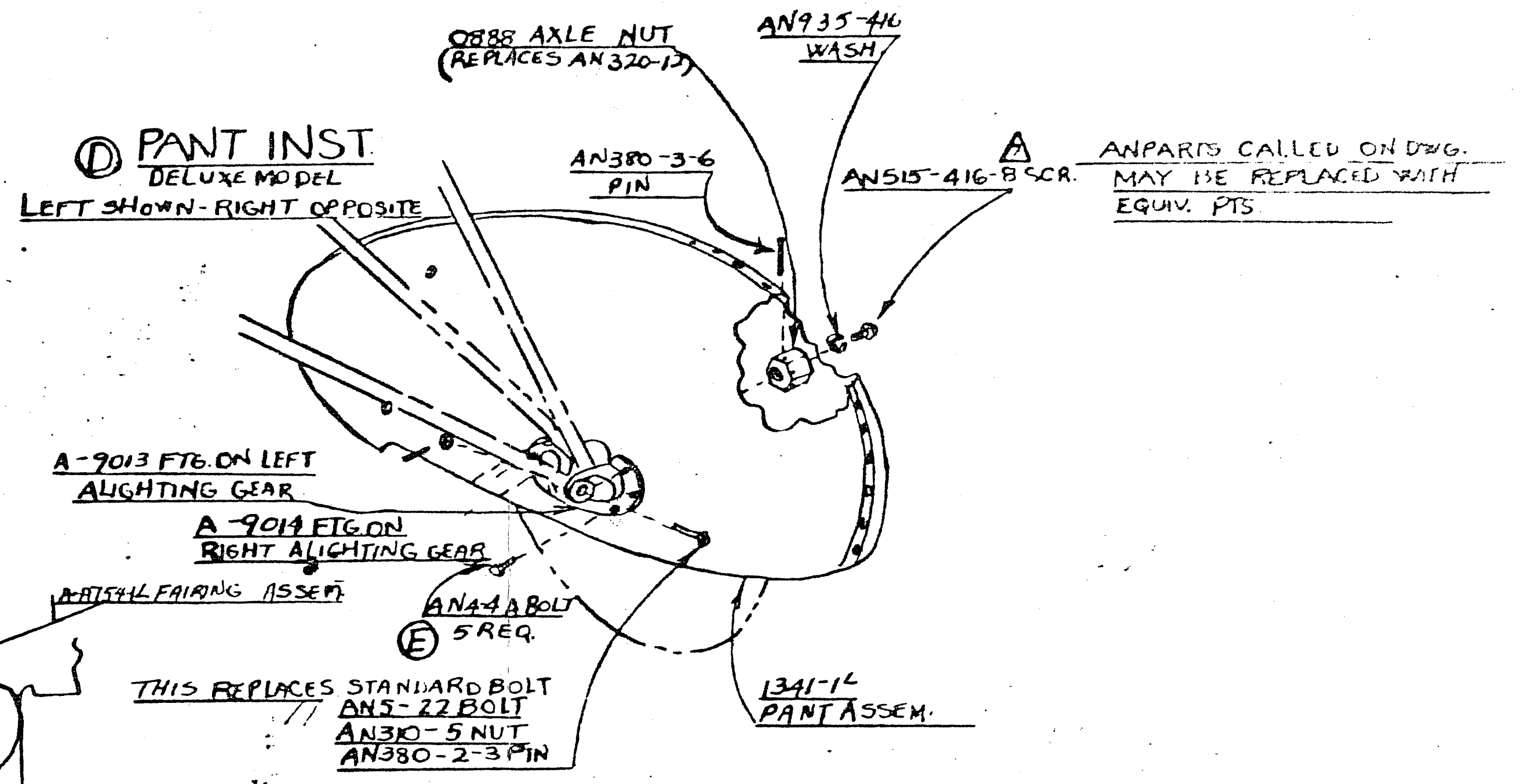
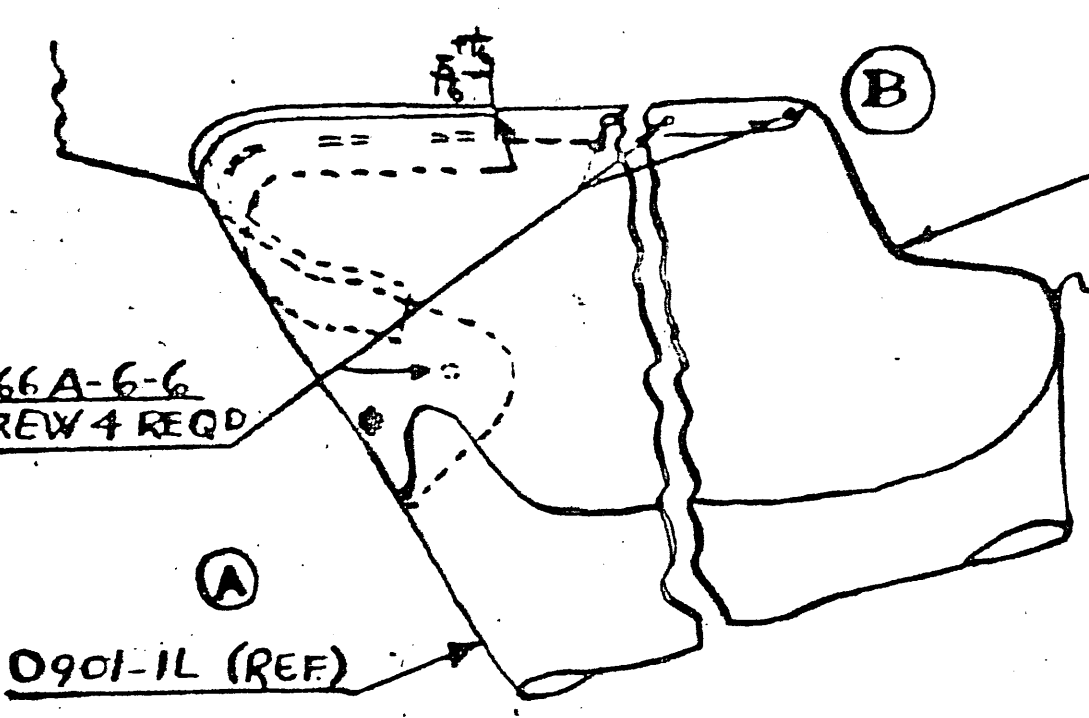
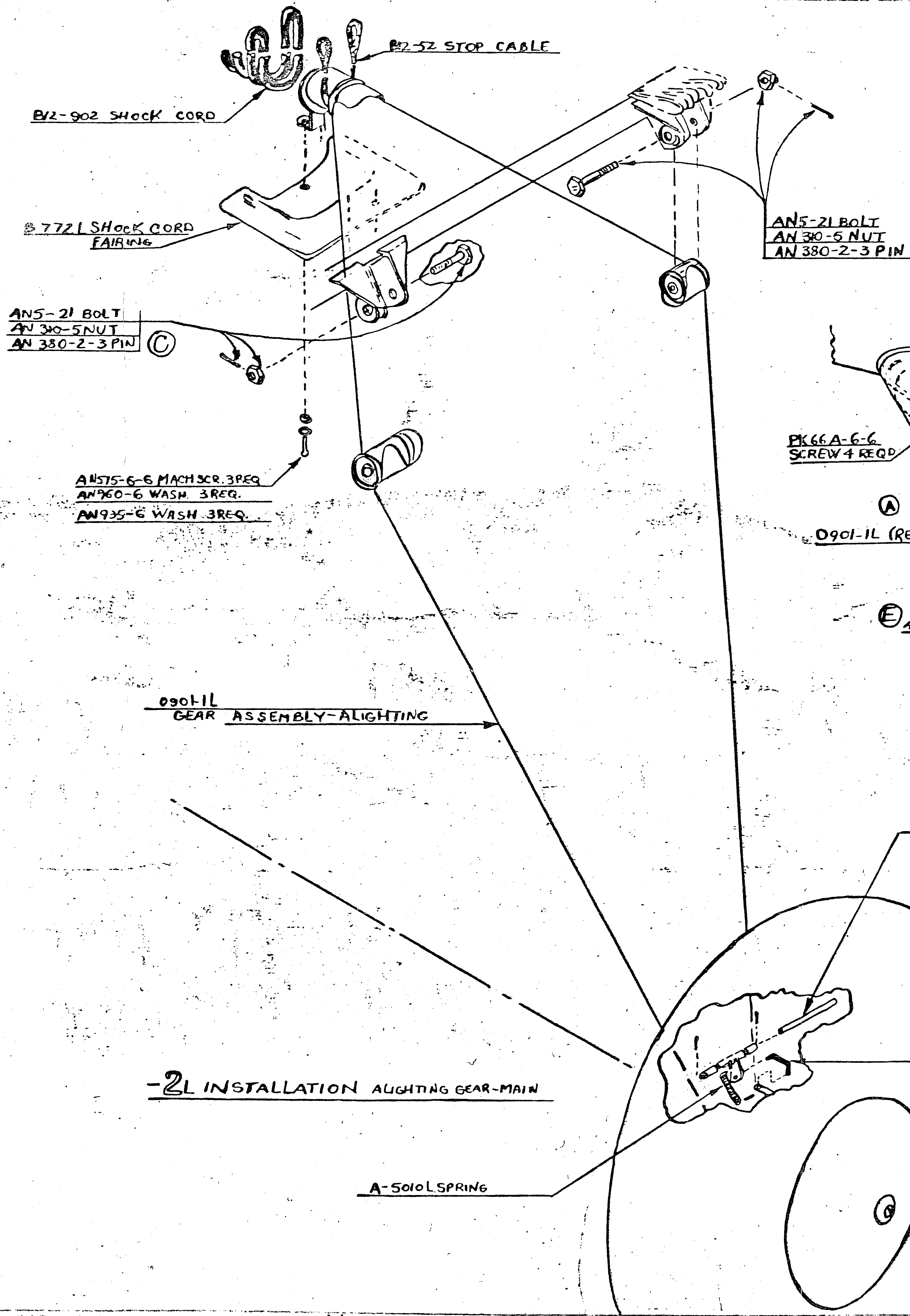
- ① 0834 -1
  - ② B12-1108
  - ③ B12-1108
  - ④
  - ⑤
- B12-A62 1 SHOTOFF ASSY
  - AN360-10 1 WASHER
  - AN380-2-1 1 PIN
  - B-A38-1 1 GAS CONNECTION
  - AN365-228 4 NUT
  - B12-104 2 TIE ROD
  - B-A116 4 RUBBER TUBE
  - B-A301 1 ELBOW / SCREW
  - B-649 1 SPRING
  - BC-905 1 GAS LINE
  - B-A305 1 SHUT-OFF
  - B-A35 1 TANK
  - B12-1108 1 INSTAL

BC12-D-85  
 N 2 1/4" ADDED NOTE FOR BC12D85 3/4 KT BY B12-1165  
 G 2 1/4" B6905 WAS 8 - 5005 AN360 1/4 KT BY B12-1165  
 F 2 1/4" 1013-2 WAS B-A38-1 3/4 KT BY B12-1165  
 E 2 1/4" ADDED 0797 ALTERNATE 1/2 KT BY B12-1165  
 D 2 1/4" ADDED 0797 ALTERNATE 1/2 KT BY B12-1165  
 C 2 1/4" ADDED B-A116 1-4 GC. C/A B12-1165  
 B 2 1/4" ADDED B-A116 1-3 J.R.A.M. B12-1165  
 A 2 1/4" ADDED B-A116 1-3 J.R.A.M. B12-1165

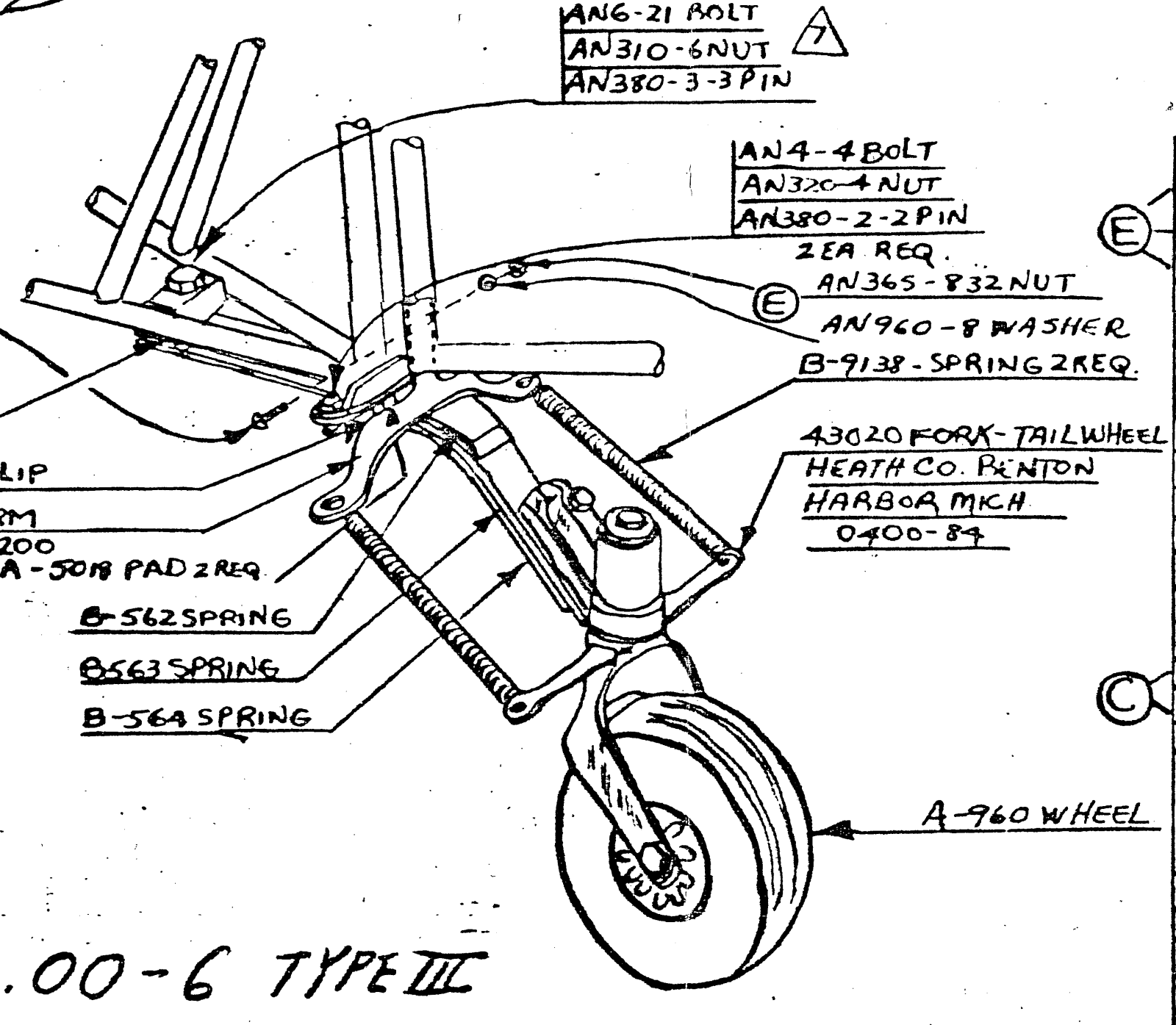
TAYLORCRAFT AVIATION CORP. ALLIANCE, O.  
 1000 W. 10TH ST. ST. LOUIS, MO. 63103  
 TEL. 314-733-1100  
 FAX 314-733-1101  
 E

FUSELAGE GAS TANK INSTALLATION B12-1108





AN PARTS CALLED ON DWG. MAY BE REPLACED WITH EQUIV. P.TS.



-2A	A-1754	1	FAIRING ASSEM.
-3	AN760-8	1	WASHER
-3	AN365832	1	NUT
-3	AN515-416	1	M. SCREW
-2B	PK66A-6-6	4	SCREW
-3	AN380-3-6	1	PIN
A	AN960-6	3	WASH.
-3	AN935-6	3	WASH.
-3	AN575-6	3	M. S.
-2A	AN380-2-3	2	A
-2A	A	7	4
A	AN380-2-2	2	PIN
A	AN380-4	2	A
-3	AN310-6	1	NUT
-3	AN527	1	A
-2A	AN5-21	2	A
-3	AN5-20	1	A
-3	AN4-4	2	BOLT
-2A	AN380-5	2	NUT
-3	HEATHCO	43020	1 FORK TAILWHEEL
-2A	O301-1L	1	GEAR ASSEMBLY
-3	B12-12K	2	SPACER
A	B2-902	1	SHOCK CORD
-2A	B12-52	1	SEPCABLE
-3	B-9138	2	SPRING
-2A	B-772L	1	FAIRING
A	B-564	1	A
A	B-563	1	A
A	B-562	1	SPRING
-3	A-5027	1	CLIP
-3	A-5018	2	PAD
-2A	A-5010	1	SPRING
-3	A-960	1	WHEEL
A	A-576	1	A
-2A	A-572L	1	ROD
-3	-3	1	INSTALLATION
0866-1			0866-1
0866-1			0866-1
Taylor Aircraft Aviation Corp., Alliance, O.			
DATE	DESIGNED BY	CHECKED BY	APPROVED BY
1/24/44	J. M. E.	J. M. E.	J. M. E.
1/24/44	J. M. E.	J. M. E.	J. M. E.
1/24/44	J. M. E.	J. M. E.	J. M. E.
1/24/44	J. M. E.	J. M. E.	J. M. E.

-2L INSTALLATION ALIGHTING GEAR-MAIN

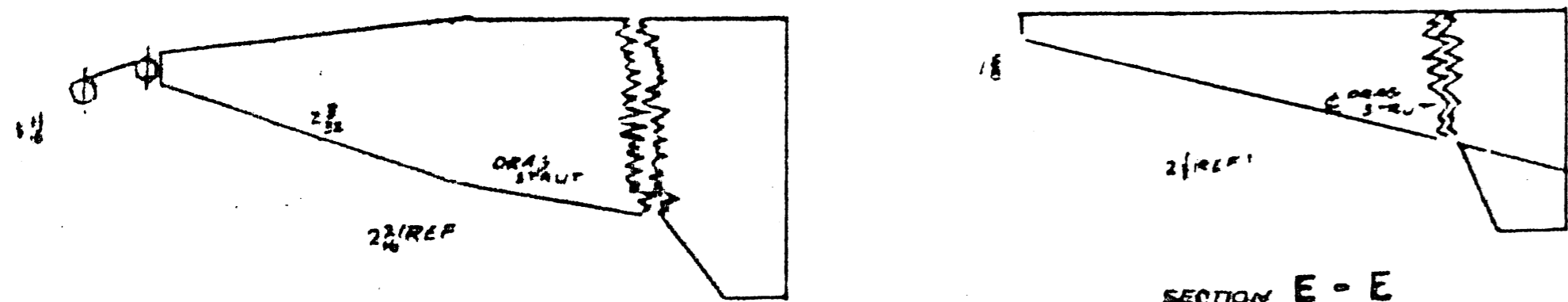
-3 INSTALLATION ALIGHTING GEAR AUX.

-1 INSTALLATION ALIGHTING GEAR

AN4-4 BOLT 5 REQ. WAS 6 REQ.	4	CLIP
B-9137, AN515-8-18, AN365-832, AN380-2-2 PIN 2REQ. B-9138 SPRING 2REQ.	2	CLIP
A-9014 FTG. ON LEFT LIGHTING GEAR, B-772L SHOCK CORD FAIRING ASSEM. & ATTACHING PARTS	1	CLIP
AN5-21 BOLT WAS AN5-20 BOLT	2	H
REMOVED A772	1	AS
ADDED DETAIL INST. A-792 & A753 = SPRKS	1	AS
REVISION'S SERIAL NO FIRST USED	1	AS

ALIGHTING GEAR INSTALLATION 0866





SECTION E - E

AN513-6-16 SCREW  
AN365-608 NUT  
AN4-12 BOLT  
AN365-428 NUT  
AN370-4 WASHER  
2 EACH REQD.  
A-8009 NIPPLE  
AN315-640 NUT  
20 EACH REQD.

AN4-12 BOLT  
AN365-428 NUT  
AN370-4 WASHER  
2 EACH REQD.  
NOTE A  
AN4-12 BOLT  
AN365-428 NUT  
AN370-4 WASHER  
2 EACH REQD.  
AN3-12 BOLT  
AN365-1032 NUT  
AN370-4 WASHER  
2 EACH REQD.

B12 L30-4 EXT. INST. (OPTIONAL)

0491-1 LEADING EDGE INST.

197 1/2  
122 1/4

7 1/2

173 3/8

B-8000 DRAG STRUT  
DETAIL  
NOTE

91 1/8  
4 1/16  
1/2 FRICTION TAPE & SHELLAC

B-4-935 JURY STRUT CROSS TUBE  
B12 1208-1 PILOT TUBE (11" WIRE ONLY)

A-8008 FRONT BUTT FITTING  
B-8001 DRAG STRUT 3 SEC'D

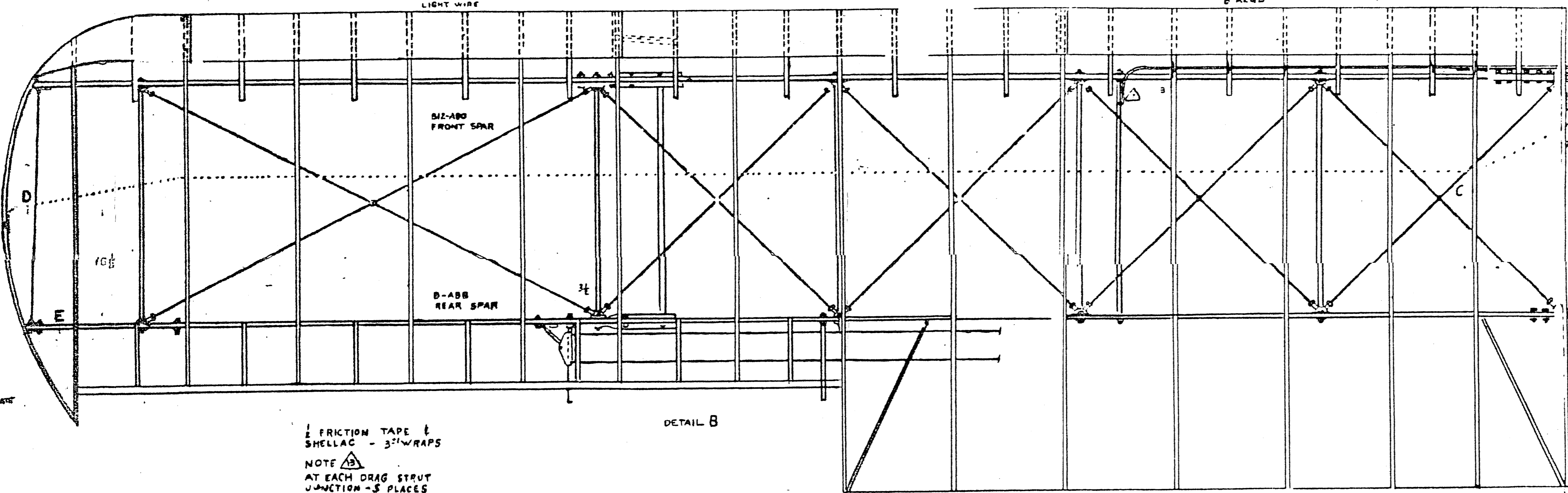
6 1/8

3 1/5

A-8003 DRAG WIRE  
B-8007 STAY WIRE (LEFT WING ONLY)

TO EXTEND B BEYOND SPAR

A-8020 DRAG WIRE  
2 REQD.  
NOTE A, A  
A-8736 LIGHT WIRE



1/2 FRICTION TAPE & SHELLAC - 3" WRAPS  
NOTE A  
AT EACH DRAG STRUT JUNCTION - 3 PLACES

DETAIL B

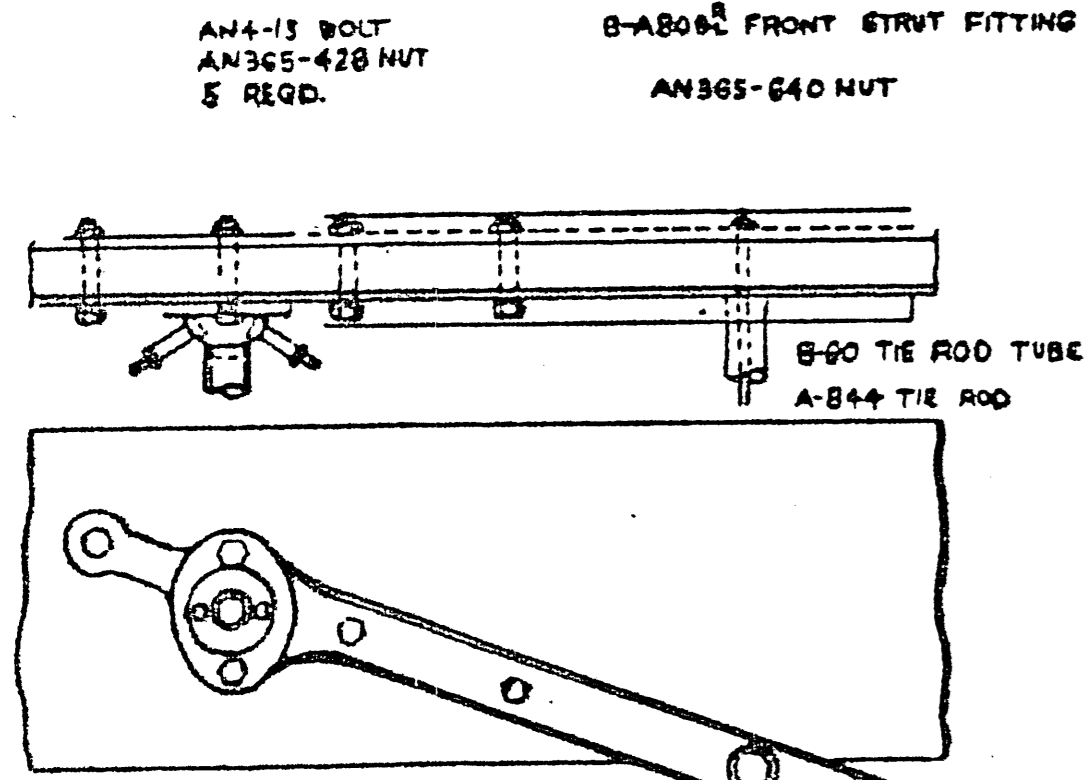
AN513-6-16 SCREW  
AN365-632 NUT  
AN4-12 BOLT  
AN365-428 NUT  
AN370-4 WASHER  
2 EACH REQD.  
NOTE A  
AN2-13 BOLT  
AN365-1032 NUT  
AN370-3 WASHER  
2 EACH REQD.

NOTE A  
AN3-14 BOLT  
AN365-1032 NUT  
AN370-3 WASHER  
2 EACH REQD.  
NOTE B  
AN4-12 BOLT  
AN365-428 NUT  
AN370-4 WASHER  
2 EACH REQD.

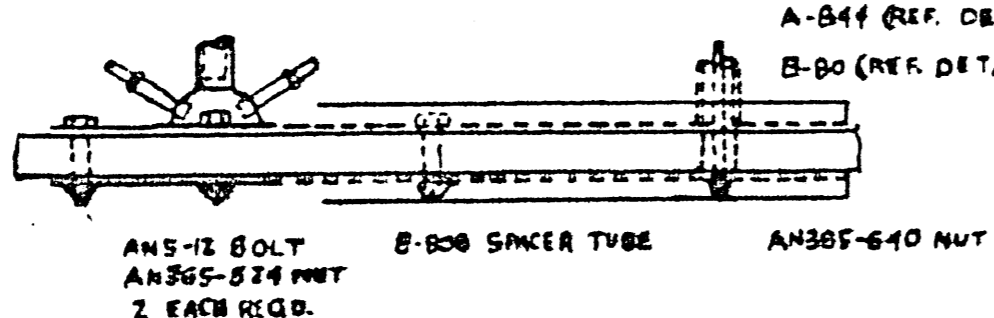
NOTE C  
AN4-12 BOLT  
AN365-428 NUT  
AN370-4 WASHER  
2 EACH REQD.  
NOTE D  
AN3-12 BOLT  
AN365-1032 NUT  
AN370-4 WASHER  
2 EACH REQD.

AN4-12 BOLT  
AN365-428 NUT  
AN370-4 WASHER  
2 EACH REQD.  
AN4-11 BOLT  
AN365-428 NUT  
2 EACH REQD.

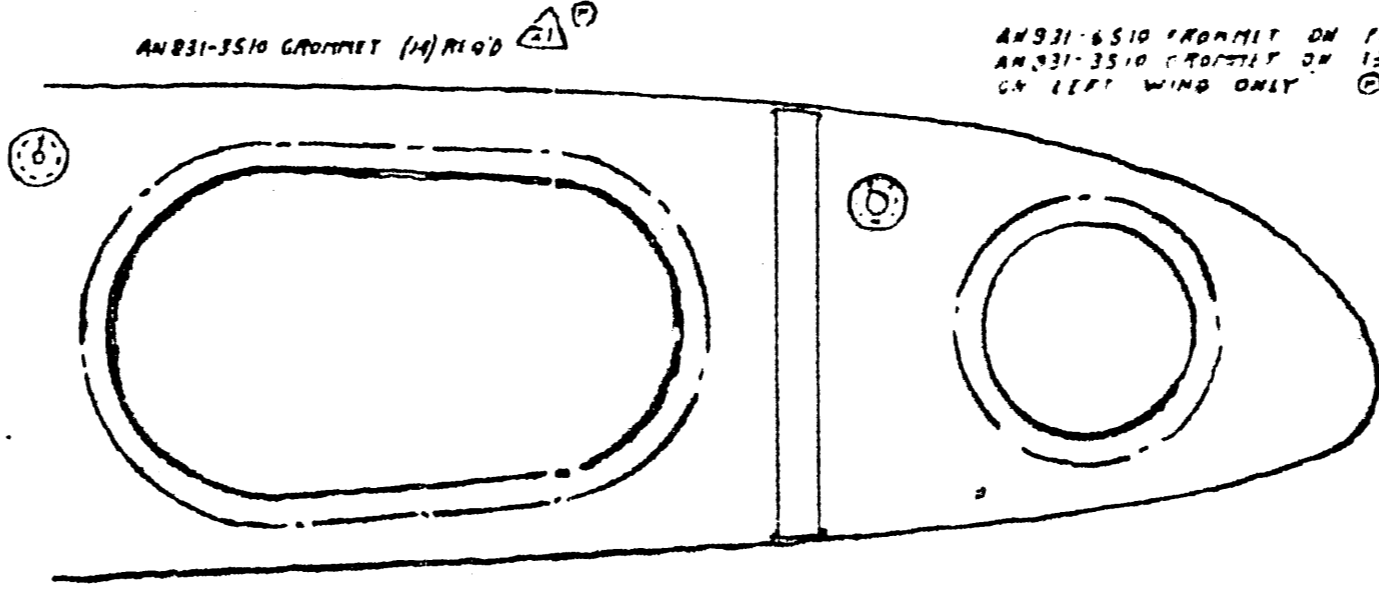
AN370-4 WASHER  
1 REQD.  
AN4-12 BOLT  
AN365-428 NUT  
2 EACH REQD.



DETAIL A 1/2 SIZE



DETAIL B 1/2 SIZE



SECTION C-C  
NIP 5:2

FOR PART NO 0886-2 ON B(12)DB5  
USE A-8006-1 IN PLACE OF A-8006 1 REQD  
B-8008-2 " " B-8008 " "  
B-8009-2 " " B-8009 " "  
B12-800-1 " " B12-800 " "

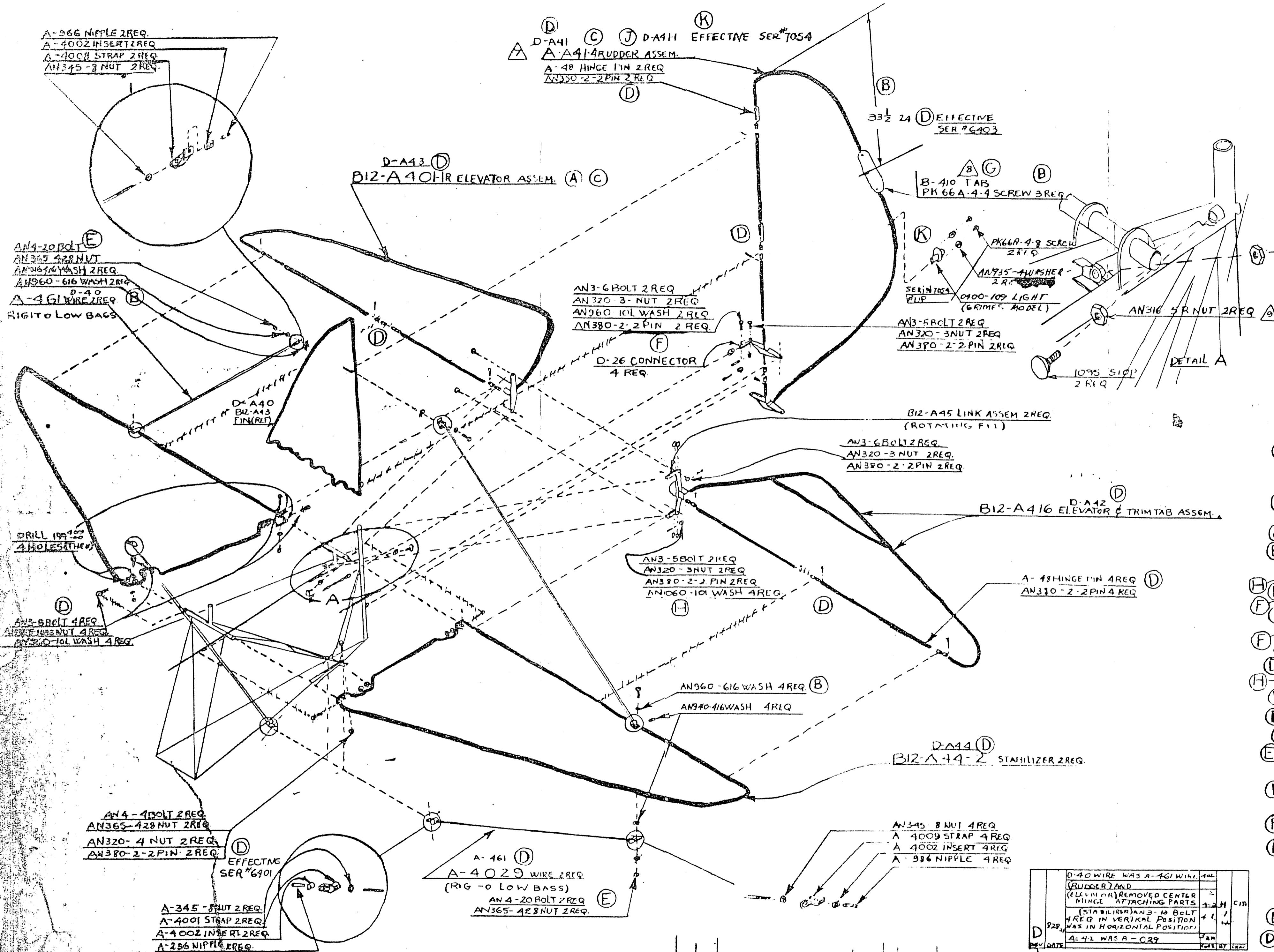
SHIM B12-12 TO BE USED WHEN EVER DRAG STRUT INTERFERES WITH SPAR ANGLE ON RIB.  
SHIM B-875 TO BE USED ON ALL DRAG BRACKETS WHEN NECESSARY.  
RIBS EQUIDISTANT BETWEEN REGULAR RIBS EXCEPT WHERE SHOWN OTHERWISE.  
EXTEND TUBE 1/2" BELOW FABRIC. INSTALL DRAG WIRES ON TOP OF ANTI DRAG WIRES.  
A-4736 USED ON LEFT WING WITHOUT FUEL TANK  
A-4738 USED ON RIGHT OR LEFT WING WITH FUEL TANK.  
ALTERNATE MATERIAL: USE TAPE ANY WIDTH FROM 1/2" TO 1" ALTERNATE FOR 1553-1 BRACKET IS B-8008 AND ATTACHING PARTS. ALT. FOR AN3-12 BOLT IS AN3-11, FOR AN3-15 IS AN3-14, FOR AN3-7 IS AN3-5, ALT. FOR 1553-2 BRACKET IS B-8008 AND ATTACHING PARTS. ALT. FOR AN3-14 BOLT IS AN3-11.  
MINIMUM CLEARANCE BETWEEN DRAG WIRES & RIB CUTOUTS IS 1/2" EDGE OF WEB MAY BE BENT TO PROVIDE THIS.  
B12-802 BRACE BOTTOM OF WING WITH TANK ONLY. USING B12-803 VALVE (NOT REQUIRED WHEN VALVE 105-ND IS USED).  
WRAP THIS END OF TUBES WITH MASKING TAPE TO PROTECT FROM PAINT.  
PAINT THIS END RED ON LONG TUBE ONLY.  
1553-1 WIRE ASSEM. ALTERNATE FOR A-4736 WIRE ASSEM. WHEN WING BOY 0923-4 IS USED FOR GRIMES MODEL E, 0400-110 & 0400-111 WING LIGHTS.  
WHEN BOW HAS WELDED WIRE, ADD 1 AN315-6-16 SCREW, 1-AN370-4 SCREW & 1-AN365-632 NUTS. A-844 TIE ROD NOT REQUIRED WHEN TANK IS INSTALLED IN AN 30-3710 BRACKETS ARE USED AND ONE AN315-6-16 IS ADDED TO LIGHT WIRE WILL BE AROUND TANK.

1553-3 BRACKET ASSEM  
B12-7891 STATIC TUBE  
AN370-3 GROMMET  
AN370-3 GROMMET  
1553-2 SHIM  
1553-2 SHIM  
B12-802 BRACE  
AN370-4 SCREW  
B12 L30-4 EXT. INST.  
0881-1 RIB BUTT INST.  
1616 PLATE  
0881-1 RIB FITTING  
0491-1 LEADING EDGE  
AN370-4 WASHER  
AN370-4 WASHER  
AN365-640 NUT  
AN365-428 NUT  
AN370-4 WASHER  
AN365-632 NUT  
AN370-4 WASHER  
AN365-428 NUT  
AN370-4 WASHER  
AN365-632 NUT  
AN370-4 WASHER  
AN365-428 NUT  
AN370-4 WASHER  
AN365-632 NUT  
AN370-4 WASHER  
AN365-428 NUT

0886-12  
0886-11  
0886-13  
0886-14  
0886-15  
0886-16  
0886-17  
0886-18  
0886-19  
0886-20  
0886-21  
0886-22  
0886-23  
0886-24  
0886-25  
0886-26  
0886-27  
0886-28  
0886-29  
0886-30  
0886-31  
0886-32  
0886-33  
0886-34  
0886-35  
0886-36  
0886-37  
0886-38  
0886-39  
0886-40  
0886-41  
0886-42  
0886-43  
0886-44  
0886-45  
0886-46  
0886-47  
0886-48  
0886-49  
0886-50  
0886-51  
0886-52  
0886-53  
0886-54  
0886-55  
0886-56  
0886-57  
0886-58  
0886-59  
0886-60  
0886-61  
0886-62  
0886-63  
0886-64  
0886-65  
0886-66  
0886-67  
0886-68  
0886-69  
0886-70  
0886-71  
0886-72  
0886-73  
0886-74  
0886-75  
0886-76  
0886-77  
0886-78  
0886-79  
0886-80  
0886-81  
0886-82  
0886-83  
0886-84  
0886-85  
0886-86  
0886-87  
0886-88  
0886-89  
0886-90  
0886-91  
0886-92  
0886-93  
0886-94  
0886-95  
0886-96  
0886-97  
0886-98  
0886-99  
0886-100

NOTES: 1. FOR A-41 ONLY, WASHES OR C.A. APPROVED  
 2. WHERE AN AN OR BOLT OR NUT IS CALLED FOR, THE PARTS LIST SHOULD BE USED  
 3. SPEC. NO. AND PART NO. SHOULD BE USED  
 4. ALL PARTS TO LATEST REV. UNLESS OTHERWISE SPECIFIED  
 5. ALL PARTS TO BE USED UNLESS OTHERWISE SPECIFIED

ALTERNATIVE TAIL SURFACES:  
 A-A 11-4 RUDDER  
 B12-A 43 PIN (REF.)  
 B12-A 44-2 STABILIZER  
 B12-A 401-1R ELEVATOR  
 B12-A 416 ELEVATOR & TRIM TAB  
 RUDDER TRIM TAB MAY BE INSTALLED ON LEFT OR RIGHT SIDE OF RUDDER.  
 WHEREVER AN PARTS ARE CALLED ON THIS DWG EQUIV. PARTS MAY BE USED.



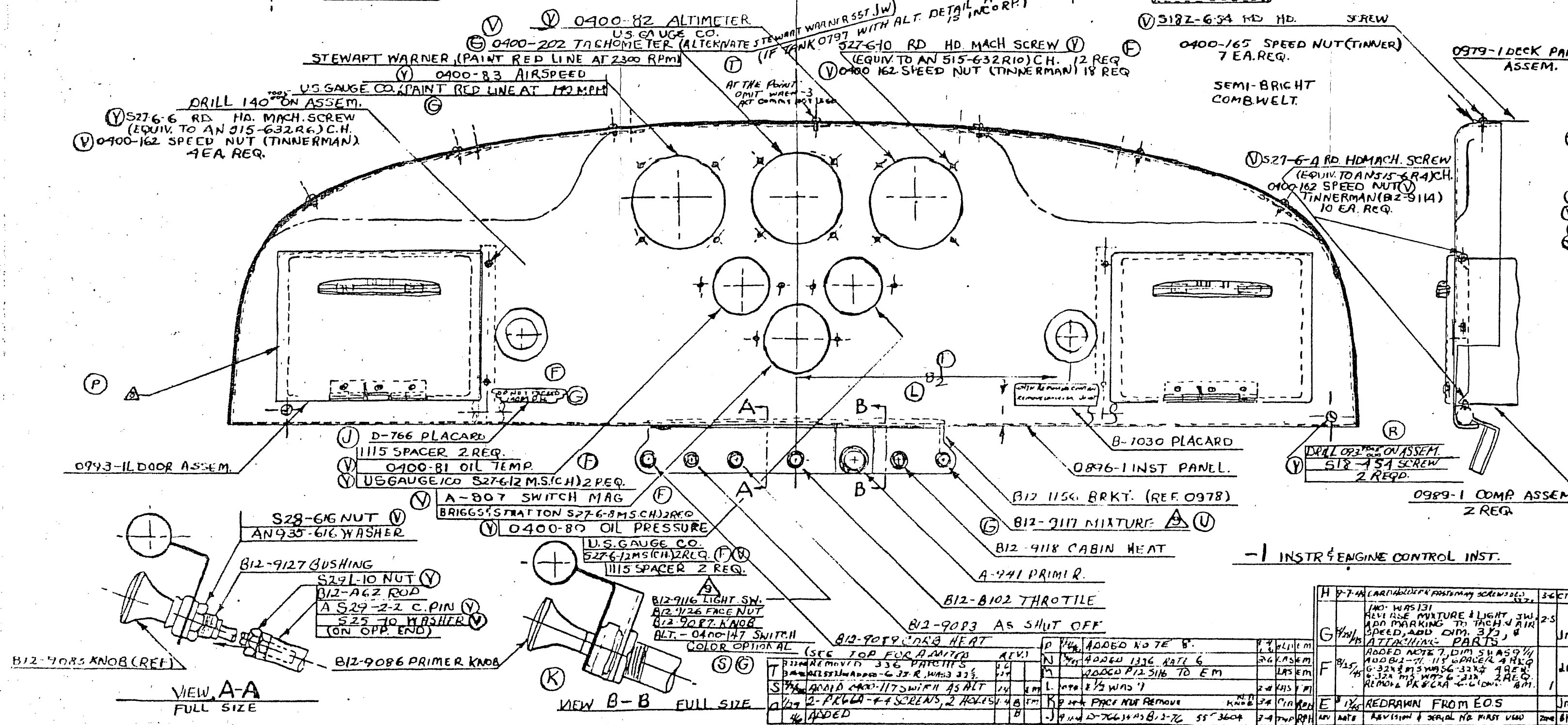
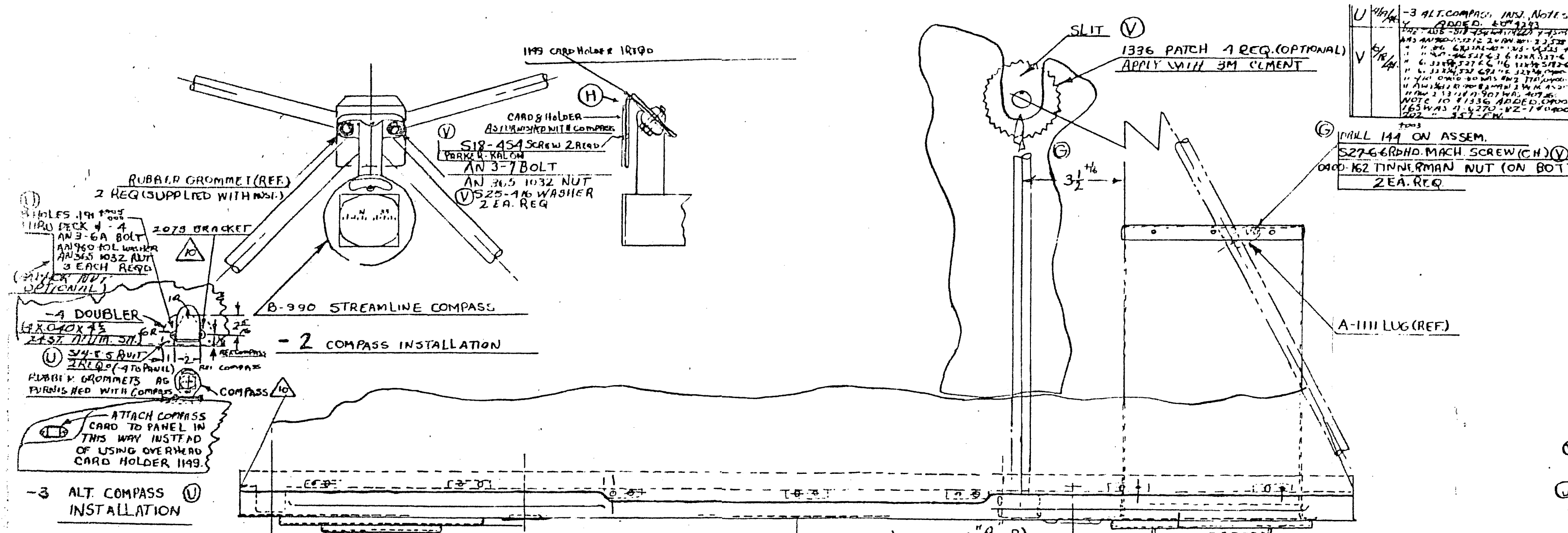
REV	DATE	DESCRIPTION	BY	CHK
K	27	GRIMES TAIL LIGHT, ATTACHING PARTS EFF SER# 7054 APPROV.	F	
J	7	WHL D-A 41 WAS D-MISER BC 3721		
H		ADDED NOTE 9		
H		ADDED DETAIL A 1095 STOP, AN316 5/8" NUT		
G		ADDED NOTE 9 RO 3630		
F	11	ADDED AN3-6 BOLT 2 REQ, AN320-3 NUT 2 REQ, AN390-2-2 PIN 2 REQ, AN3-5 BOLT 2 REQ, AN320-3 NUT 2 REQ, AN390-2-2 PIN 2 REQ	E	
E	11	ADDED AN3-6 BOLT 2 REQ, AN320-3 NUT 2 REQ, AN390-2-2 PIN 2 REQ, AN3-5 BOLT 2 REQ, AN320-3 NUT 2 REQ, AN390-2-2 PIN 2 REQ		
D	11	ADDED AN3-6 BOLT 2 REQ, AN320-3 NUT 2 REQ, AN390-2-2 PIN 2 REQ, AN3-5 BOLT 2 REQ, AN320-3 NUT 2 REQ, AN390-2-2 PIN 2 REQ		
C		ADDED AN3-6 BOLT 2 REQ, AN320-3 NUT 2 REQ, AN390-2-2 PIN 2 REQ, AN3-5 BOLT 2 REQ, AN320-3 NUT 2 REQ, AN390-2-2 PIN 2 REQ		
B		ADDED AN3-6 BOLT 2 REQ, AN320-3 NUT 2 REQ, AN390-2-2 PIN 2 REQ, AN3-5 BOLT 2 REQ, AN320-3 NUT 2 REQ, AN390-2-2 PIN 2 REQ		
A		ADDED AN3-6 BOLT 2 REQ, AN320-3 NUT 2 REQ, AN390-2-2 PIN 2 REQ, AN3-5 BOLT 2 REQ, AN320-3 NUT 2 REQ, AN390-2-2 PIN 2 REQ		

REV	DATE	DESCRIPTION	BY	CHK
649521				
04919				
0495				

REV	DATE	DESCRIPTION	BY	CHK
649521				
04919				
0495				



U	-1	1336	4	PATCH
V	-1	132-7116	1	LIGHT SWITCH
V	-2	S18-454	2	SCREW
V	-2	1149	1	BRACKET
V	-1	1115	1	SPACER
V	-1	D-766	1	PLACARD
V	-1	O896-1	1	INST. PANEL
V	-1	S25-10	1	WASHER
V	-1	S27-28	1	C PIN
V	-1	AN356	1	WASHER
V	-1	S28-68	1	NUT
V	-1	O923-1	1	DOOR ASSEMBLY
V	-1	O989-1	2	COMPART. ASSY.
V	-1	O979-1	1	DECK PANEL ASSY.
V	-1	S28-10	1	NUT
V	-2	S25-10	2	WASHER
V	-1	O400-165	7	SPEED NUT
V	-2	O400-162	34	SPEED NUT
V	-2	AN356	2	NUT
V	-1	S27-6	10	SCREW
V	-1	S27-6-8	2	MACH. SCREW
V	-1	S27-6-10	12	MACH. SCREW
V	-1	S27-6-6	6	MACH. SCREW
V	-1	S27-6-4	7	SCREW
V	-1	S27-6-12	4	MACH. SCREW
V	-1	AN3-7	2	BOLT
V	-2	B-990	1	COMPASS
V	-1	O894	1	DOOR ASSEMBLY
V	-1	O400-80	1	OIL PRESSURE
V	-1	O400-82	1	ALTIMETER
V	-1	O400-83	1	AIRSPEED
V	-1	O400-81	1	OIL TEMP.
V	-1	A-907	1	SWITCH MAG.
V	-1	O400-202	1	TACHOMETER
V	-1	B12-9087	1	KNOB
V	-1	B12-A62	1	ROD ASSEM.
V	-1	B12-9127	1	BUSHING
V	-1	B12-9126	1	FACE NUT
V	-1	B12-9118	1	CABIN HEAT
V	-1	B12-9117	1	MIXTURE
V	-1	B12-9102	1	THROTTLE
V	-1	B12-9089	1	CARB. HEAT
V	-1	B12-9086	1	PRIMER KNOB
V	-1	B12-9085	1	GAS KNOB
V	-1	B12-924	1	BUTTON
V	-1	B-7030	1	PLACARD
V	-1	A-941	1	PRIMER
V	-2	O894-1	2	COMPASS INST.
V	-1	O895-1	1	INST. ENGINE INST.

H	7-4	ADD CARD HOLDER ASSEMBLY SCREWS	2	3	4	NO
G	7-1	ADD WASHER	1	2	3	NO
F	7-1	ADD MARKING TO TACH. AIR SPEED, ADD DIM. 3/2"	1	2	3	NO
E	7-1	REDRAWN FROM EOS	1	2	3	NO

TAYLORCRAFT AVIATION CORP., ALLIANCE CO.  
 INSTRUMENT & ENGINE CONTROL INSTALLATION  
 O894

NOTES: 1. FOR C.A.A. REF. ONLY, PART IS OR C.A.A. APP. EQUIV.  
 2. WHENEVER AN OR EQUIV. BOLT & NUT IS CALLED OUT, MATCHING AN OR EQUIV. WASHERS (U. MAX.) MAY BE USED \*  
 3. SPEC. NO. AND FINISH NO. ARE TYPE STANDARD A  
 4. ALL PARTS TO LATEST REVISIONS.  
 5. APOSTROPHES - UNLESS OTHERWISE STATED.  
 6. ALL SAFETY TO SPEC. NO. 112 OR TO MFG. SPEC.  
 7. INSTALLATION 0868-2, ADDL. 0868-1 USE 0580-2 INSTEAD OF 0980-1

0980-1 ENGINE INST.

B-A679 COWLING ASSEM.-(TOP)

B-9039 SUP SEAM- COWLING

BC-A6014 COWLING ASSEM.-NOSE.

AN960-10 WASH.  
AN380-2-2 PIN  
AT THROTTLE

0982-1 PROPELLER INST.

DCO-7322 BOLT  
AN320-4 NUT  
(SAFETY) SEE NOTE 6  
AT MIXTURE CONTROL

B-669 SPRING  
D-6114 BOLT  
AN320-3 NUT  
(SAFETY)  
AT AIR SCOOP

CARBURETOR (REF)

MIXTURE CONTROL (REF)

DCO-6209 CLAMP  
AN515-6-7 SCREW  
AN365-6-32 NUT

B12-910Z CABLE (REF)

FRICION TAPE -  
WRAP 18 TIMES

FIREWALL (REF)

D-6114 BOLT  
AN320-3 NUT  
(SAFETY)  
AT CABIN HEATER

B-A68 COWLING ASSEM.-(BOTTOM)

HEATER MUFF (REF)

BC-6209

THROTTLE ACTUATOR (REF)

AN515-6-6 SCREW  
AN365-6-32 NUT  
AN960-6 WASHER

VIEW A  
FROM OPP SIDE

F	B-669	1	SPRING
	AN960-6	1	WASHER
	AN515-6-6	1	SCREW
	BC-6209	1	CLAMP
G	COMMERCIAL FRICION TAPE	1/2	X25
	AN760-10	1	WASH.
	AN380-2-2	1	PIN
			0868
	AN320-4	1	
	AN365-6-32	2	
	AN320-3	2	NUT
	AN515-6-7	1	SCREW
	DCO-7322	1	
E	D-6114	2	BOLT
	0982-1	1	PROPELLER
	BC-A6014	1	COWLING NOSE
	B-A679	1	COWLING ASSEM. TOP
	0980-1	1	ENGINE INST.
	BC-6209	1	CLAMP
	B-A68	1	COWLING ASSEM. BOT.
	B-9039	1	SUP SEAM
	0868-1		
	0863-1		
	0868-1		INST.

VIEW B

D-922-45	AN960-6 WASHER ADDED AN365-6-32 NUT (CALLOUT EX) AN515-6-6 SCREW 3/4 (03558) ADDED BC-6209 CALLOUT 3/4	1-9	TREM
C-964	ADDED VIEW-A ADDED TO NOTE 6	1-4	T.P. EM
B-824	ADDED DCO-6209 AN515-6-7 AN365-6-32 ADDED VIEW A FOR 3108	2-3	T.B. EM
A-822-4	DCO-7322 WAS AN4-4 INCORPORATED 3107	2-3	T.P. EM

65 HP	TAYLORCRAFT AVIATION CORP. ALL	MANUFACTURED
85 HP	SEE NOTE 7	MANUFACTURED
BC-12	POWER PLANT	MANUFACTURED

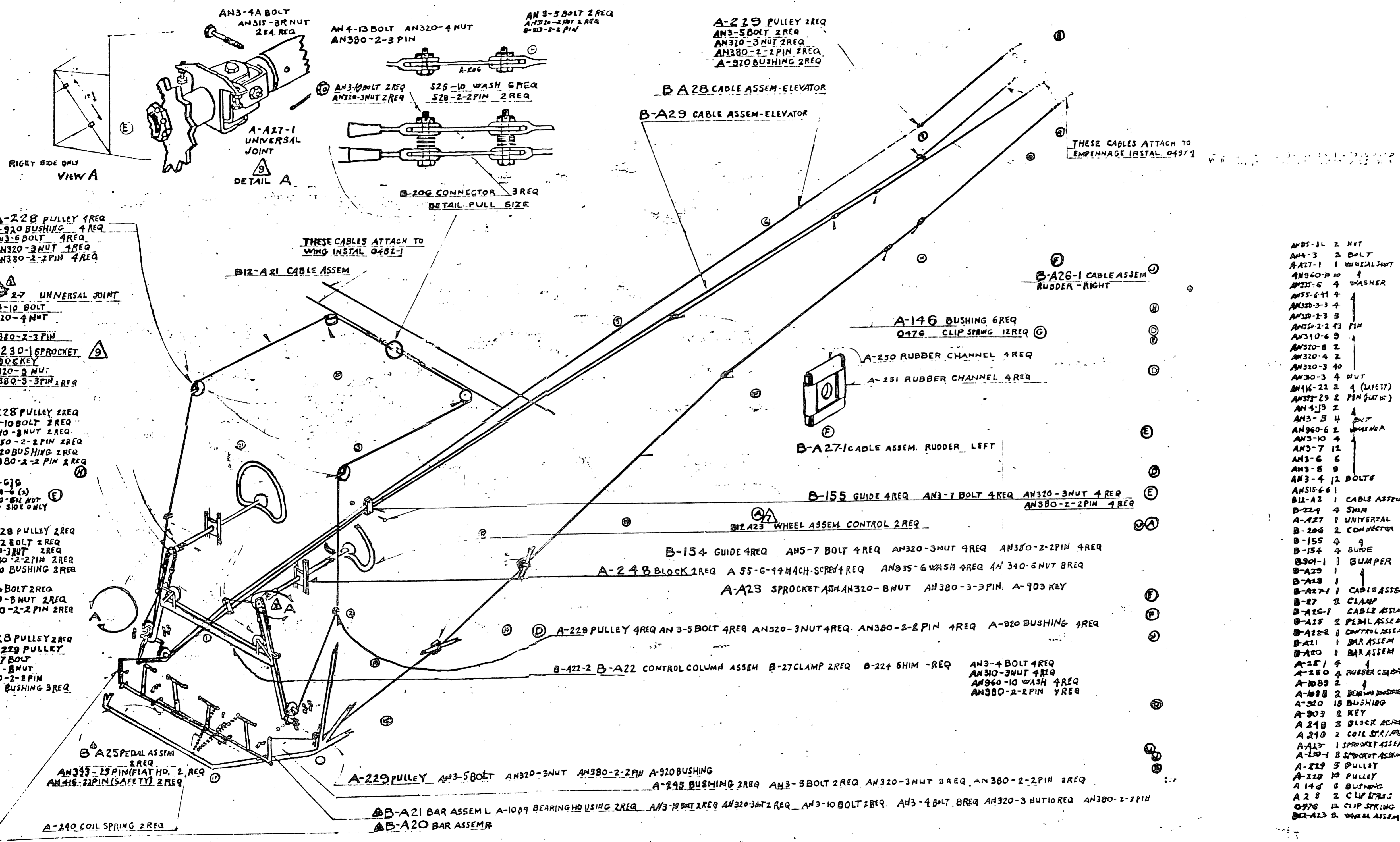
H 2/1/48 0858-3 ADDED

1-9/47

F 1224 ADDED B-669 SPRING CALLOUT 2-3 CH 118

A 8-22-48





- A-228 PULLEY 4 REQ
- A-920 BUSHING 4 REQ
- AN3-6 BOLT 4 REQ
- AN320-3 NUT 4 REQ
- AN380-2-2 PIN 4 REQ

- A-27 UNIVERSAL JOINT
- AN4-10 BOLT
- AN320-4 NUT
- AN380-2-3 PIN
- A-230-1 SPROCKET
- A-903 KEY
- AN320-3 NUT
- AN380-3-3 PIN 1 REQ

- A-228 PULLEY 2 REQ
- AN3-10 BOLT 2 REQ
- AN310-3 NUT 2 REQ
- AN380-2-2 PIN 2 REQ
- AN920 BUSHING 2 REQ
- AN380-2-2 PIN 2 REQ

- AN316-636
- AN320-6 NUT (2)
- AN320-6 NUT RIGHT SIDE ONLY

- A-228 PULLEY 2 REQ
- AN3-2 BOLT 2 REQ
- AN320-3 NUT 2 REQ
- AN380-2-2 PIN 2 REQ
- AN920 BUSHING 2 REQ

- AN3-10 BOLT 2 REQ
- AN320-3 NUT 2 REQ
- AN380-2-2 PIN 2 REQ

- A-228 PULLEY 2 REQ
- AN229 PULLEY
- AN3-17 BOLT
- AN320-3 NUT
- AN380-2-2 PIN
- AN920 BUSHING 3 REQ

- AN5-14 2 NUT
- AN4-3 2 BOLT
- A-A27-1 1 UNIVERSAL JOINT
- AN360-10 1
- AN315-6 4 WASHER
- AN55-6-14 4
- AN320-3-3 4
- AN320-2-3 3
- AN320-2-2 13 PIN
- AN340-6 3
- AN320-8 2
- AN320-4 2
- AN320-3 40
- AN30-3 4 NUT
- AN416-22 2 (SAFETY)
- AN320-29 2 PIN (SAFETY)
- AN4-13 2
- AN3-5 4
- AN360-6 2 WASHER
- AN3-10 4
- AN3-7 12
- AN3-6 6
- AN3-8 9
- AN3-4 12 BOLTS
- AN515-6 1
- B12-A2 1 CABLE ASSEM
- B-224 4 SHIM
- A-A27 1 UNIVERSAL
- B-206 2 CONNECTOR
- B-155 4
- B-154 4 GUIDE
- B901-1 1 BUMPER
- B-A23 1
- B-A28 1
- B-A27-1 1 CABLE ASSEM
- B-27 2 CLAMP
- B-A26-1 1 CABLE ASSEM
- B-A25 2 PEDAL ASSEM
- B-A22-2 1 CONTROL ASSEM
- B-A21 1 BAR ASSEM
- B-A20 1 BAR ASSEM
- A-25 1 4
- A-250 4 RUBBER CHANNEL
- A-1089 2
- A-1088 2 BEARING HOUSING
- A-320 10 BUSHING
- A-303 2 KEY
- A-248 2 BLOCK ASM
- A-210 2 COIL SPRING
- A-A23 1 SPROCKET ASSEM
- A-101 8 SPROCKET ASSEM
- A-229 5 PULLEY
- A-228 10 PULLEY
- A-146 6 BUSHING
- A-28 2 CLIP SPRING
- Q476 12 CLIP SPRING
- B-A23 2 WHEEL ASSEM

22387 CONE  
21530 WASHER  
8 EA. REQ. } REF. CONT. PARTS  
FURNISHED WITH ENGINE

AN6-34 BOLT  
AN310-6 NUT  
AN360-3-3 PIN  
4 EACH REQD.

BC-A157 MOTOR MOUNT

B-A755 SHAFT ASSEM. - TACHOMETER. (C)

B-A146 FUSELAGE (REF.)

AN5-31 BOLT  
AN310-5 NUT  
AN382-2-2 PIN  
4 EACH REQD.

OIL PRESSURE LINE B-A706 (B)

FIREWALL (REF.)

OIL TEMP. BULB (REF.)

AN900-10 GASKET (C)

B-9093 ENGINE (CONTINENTAL A65-8)  
FOR AIRCRAFT MODEL BC12D85  
ENGINE CONTIN, C85-8, C85-8F

B-610 OIL BREATHER TUBE  
B-611 HOSE  
BC-909 CLAMP 2 REQ.

NOTES: 1. FOR C.A. REF. ONLY, MATZ #5 O.R.C.A. APPROVED.  
2. UNLESS OTHERWISE SPECIFIED, ALL BOLTS & NUTS ARE TO BE OF THE SAME MATERIAL & FINISH AS THE PARTS THEY JOIN.  
3. SPEC. NO. AND FINISH NO. ARE TO BE STANDARD.  
4. ALL AN SPEC. TO LATEST REV. UNLESS OTHERWISE STATED.  
5. ALL SAFETY CRITICAL PARTS - UNLESS OTHERWISE STATED.  
6. ALL SAFETY CRITICAL PARTS TO SPEC. NO. 112.  
7. DRAW UP NUTS ON AN6 BOLTS TO A TORQUE OF FROM 65 TO 75 IN. LBS. (REF. CONTINENTAL MEMO REPORT #5010)

8. PROPELLER SHAFT HUB & EXPOSED WELD PARTS NOT PROPERLY RUST PROOFED TO BE COATED WITH PAR-AL-KETONE "B" OR EQUIVALENT THINNED WITH EQUAL PARTS OF LEAD FREE GASOLINE.  
9. FASTEN WITH 1/2 INCH FRICTION TAPE - 6 WRAPS.

10. ALTERNATE ENGINE, 0400-195 (CONTINENTAL A65-8F) FLANGED CRANKSHAFT.

11. 0980-2, MODEL BC12D85 USE 2575 INSTEAD OF 0966-1 USE C-85 ENGINE IN PLACE OF A-65 AS DETAILED

0980

(C)			B-A755	1	SHAFT-ASSEM.
	-1		AN900-10	1	GASKET
			TAPE FRKT		1/2 x 40
	-1		B6-909	2	CLAMP
	-1		B-611	1	HOSE
	-1		B-610	1	TUBE-OIL BREATHER
(B)			B-A706	1	OIL PRESS. LINE
	-1		BC-A157	1	MOUNT
	-1		AN380-3-3	4	PIN
	-1		AN380-2-2	4	PIN
	-1		AN310-6	4	NUT
	-1		AN310-5	4	NUT
	-1		AN6-34	4	BOLT
	-1		AN5-31	4	BOLT
	-1		BC-L637	1	COOLING INSTAL.
	-1		BC-L630	1	AT EXHAUST INST.
(D)			B-9093	1	ENGINE-CONT.
	0980-1		0966-1	1	FUEL INSTALL.
	0868-1		0990-1	1	ENGINE INSTALL.

E	1/31/48	MODEL BC12D85 & CONTINENTAL C85-8 & C85-8F ADDED	24	KT	HN
D	5/27/48	B-9093 WAS A-65-B NOTE 10 ADDED	1-3	AK	EM
C	7/29/48	ADD. B-A755	7-2	ACB	CIA
B	11/30/48	ADD OIL TEMP BULB & AN900-10	1-4	JAS	CIA
A	9-4-48	B-A706 WAS DCA7081-EO9399	1-4	LAC	CIA
		REVISED DWG OF BREATHER LINE & ADDED NOTE 9	2-4	LDS	EM

TAYLORCRAFT AVIATION CORP., ALLIANCE O.					
LIMITS ON DIMS	OF HAND FINISH	OF SURFACE FINISH	OF ROUGHEN, FILE OR GRIND	OF STROKE BLAST	DATE 6-22-48
FRAC. ±	DEC. ±	ANG. ±	FR. ±	DATE 6-22-48	CHD B J.M.
FR. ±	FR. ±	FR. ±	FR. ±	DATE 6-22-48	DATE 6-22-48
ENGINE INSTALLATION					
CONTINENTAL A-65 & C85					

0980