

D-335

093 I.P.O. (J)

NOTE: MAX. OUT OF ROUND .000 (L)

NOTE: MAX. OUT OF ROUND .005 (K)

NOTE: MAX. OUT OF ROUND .000 (M)

NOTE: MAX. OUT OF ROUND .000 (N)

NOTE: MAX. OUT OF ROUND .000 (O)

NOTE: MAX. OUT OF ROUND .000 (P)

NOTE: MAX. OUT OF ROUND .000 (Q)

NOTE: MAX. OUT OF ROUND .000 (R)

NOTE: MAX. OUT OF ROUND .000 (S)

MATERIAL ACETATE BUTYRATE TUBE
 NOTE: MATERIAL MUST BE COLORLESS & MUST NOT BE AFFECTED BY CONTACT WITH GASOLINE

0-57
0-57A

QTY	DN ASSEM.	START	FINISH	ON DWG.
1	D-A344		D-A310	
	B-A344			
	6253			
L-2M	5166		5999	
2	D-A343		D-A310	
L-2A	5066		5165	
L-2B	4576		5065	
L-2A	4200		4575	
2	D-A305 L-R		D-A310	
	4056		4066	
	4045		4054	
L-2	4008		4011	

NOTE: CUTTING LENGTH 10 1/2" (A)

FOR CA. SERIES IN MULTIPLE LENGTHS OF CUTTING LENGTH. ALLOW FOR M.L. LOST IN CUTTING.

CHANGE FROM COLORLESS PLASTIC TUBE TO ACETATE BUTYRATE TUBE FOR QTY'S TO ADD TO ASSEMBLY TABLE

NOTE	ADDED	REMOVED	NET	QTY	REV.
M				9-20-4	LI
N				5-21-4	RM
O				5-21-4	RM
P				5-21-4	RM
Q				5-21-4	RM
R				5-21-4	RM
S				5-21-4	RM
T				5-21-4	RM

AVIACRAFT ALLIANCE, OHIO

TUBE-SIGHT TWINING TANK GAUGE

NO. 4-18-41

TEXAS PER SHIP

1 2

DATE BY

L-2A
 L-2B
 L-2M

MAT'L. BY 10/10/41

0-57

GEN. TOL. ± 1/32"

FULL

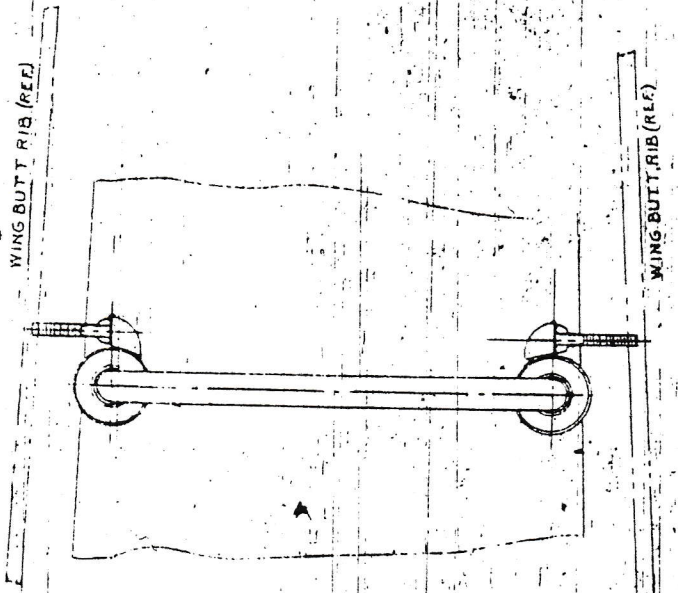
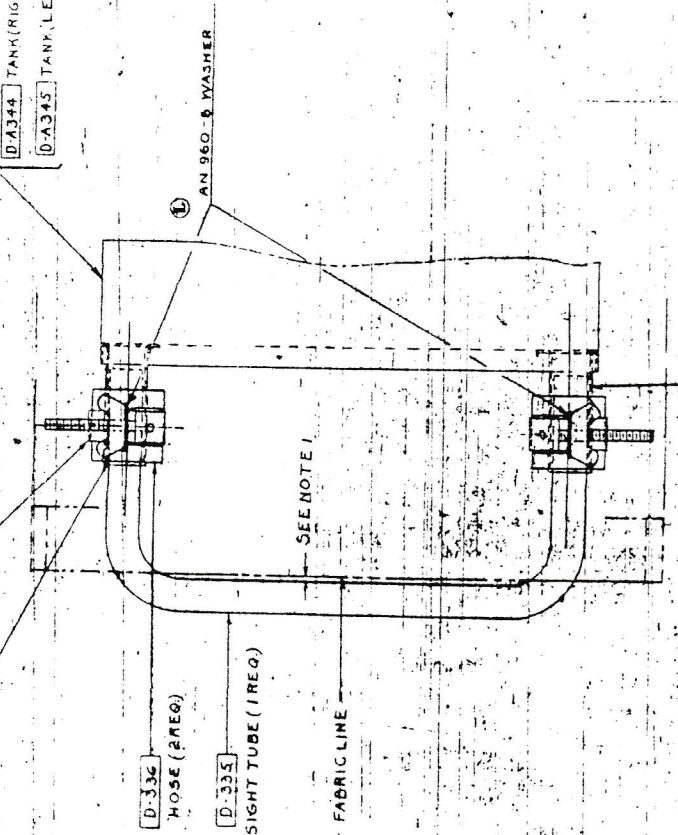
MODEL D & DN

PART NO. D-335

0-57A

- ON ASSEM:
- D-A343 TANK WOOD WING
 - D-A305 TANK METAL WING
 - D-A344 TANK (RIGHT)
 - D-A345 TANK (LEFT)

D-372 SEAL (REQ) - AN 746 T.C. CLAMP (A-95) (REQ)
(2 REQ)



1-2M		WASHER ADDED		1/2	1/4
1-2B		WASHER ADDED		1/2	1/4
1-2A		REFRANK, SEE NOTE 2		2.3	1/4
1-2		INSULATION FUEL GAUGE		1/2	1/4

1443

745-1B WAS D-939. D-572 WAS 4 REQ.
 E.D. 1336 A REMOVED TO GO-1357-87 ENGL.
 REF FUEL GAUGE SUPPORT. D-976 GRADUATION.
 T REVISION WAS H 12-24-42.
 RANCE FROM SIGHT GAUGE TUBE D-335
 FABRIC LINE TUBE 1/4 IN.
 NECESSARY ENDS OF TUBE MAY BE CUT
 TO MAINTAIN THIS LIMIT