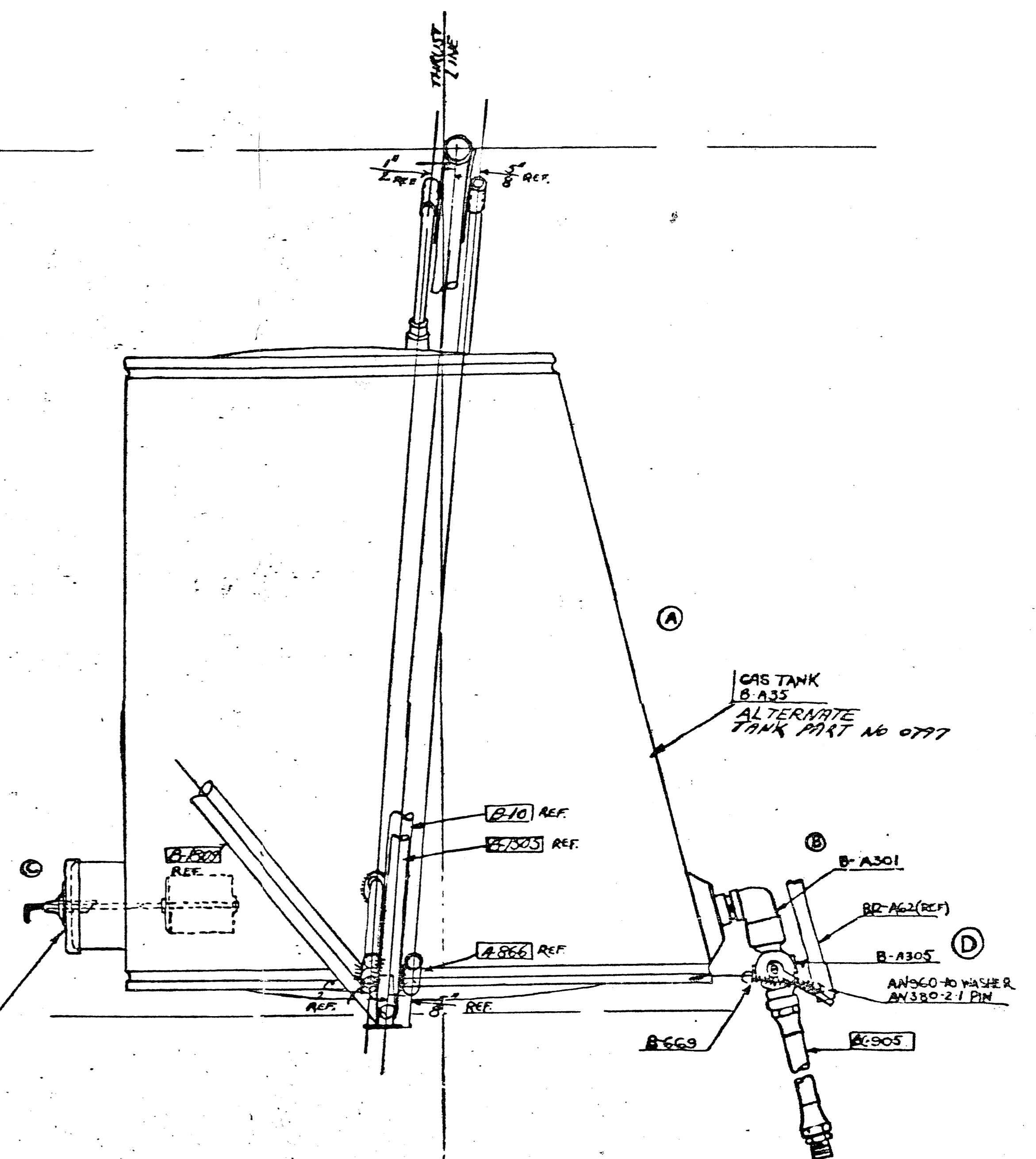
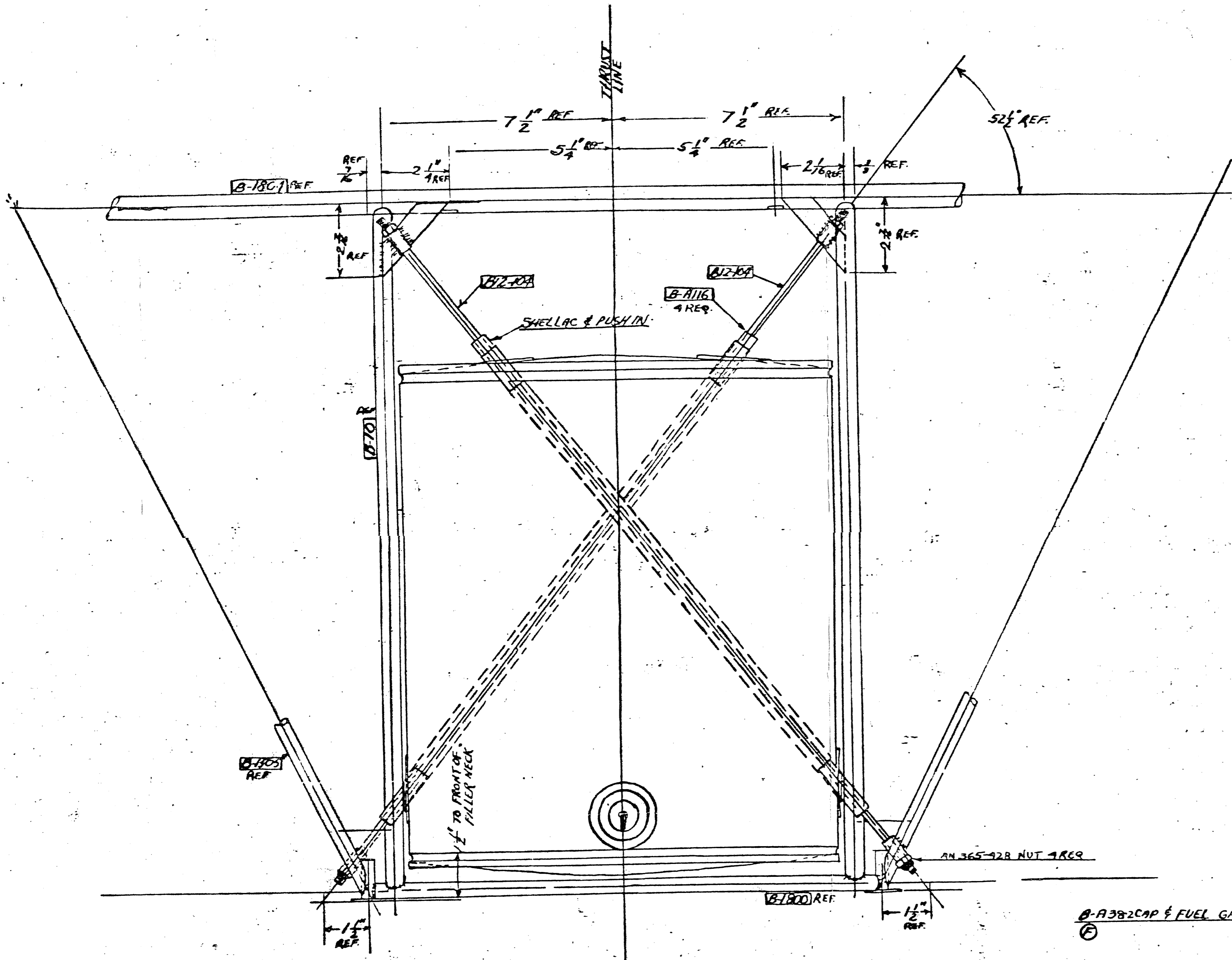


NOTES: 1. FOR A & B ONLY MODEL...
 2. MAXIMUM...
 3. SPEC...
 4. ALL...
 5. REF...
 6. REF...
 7.



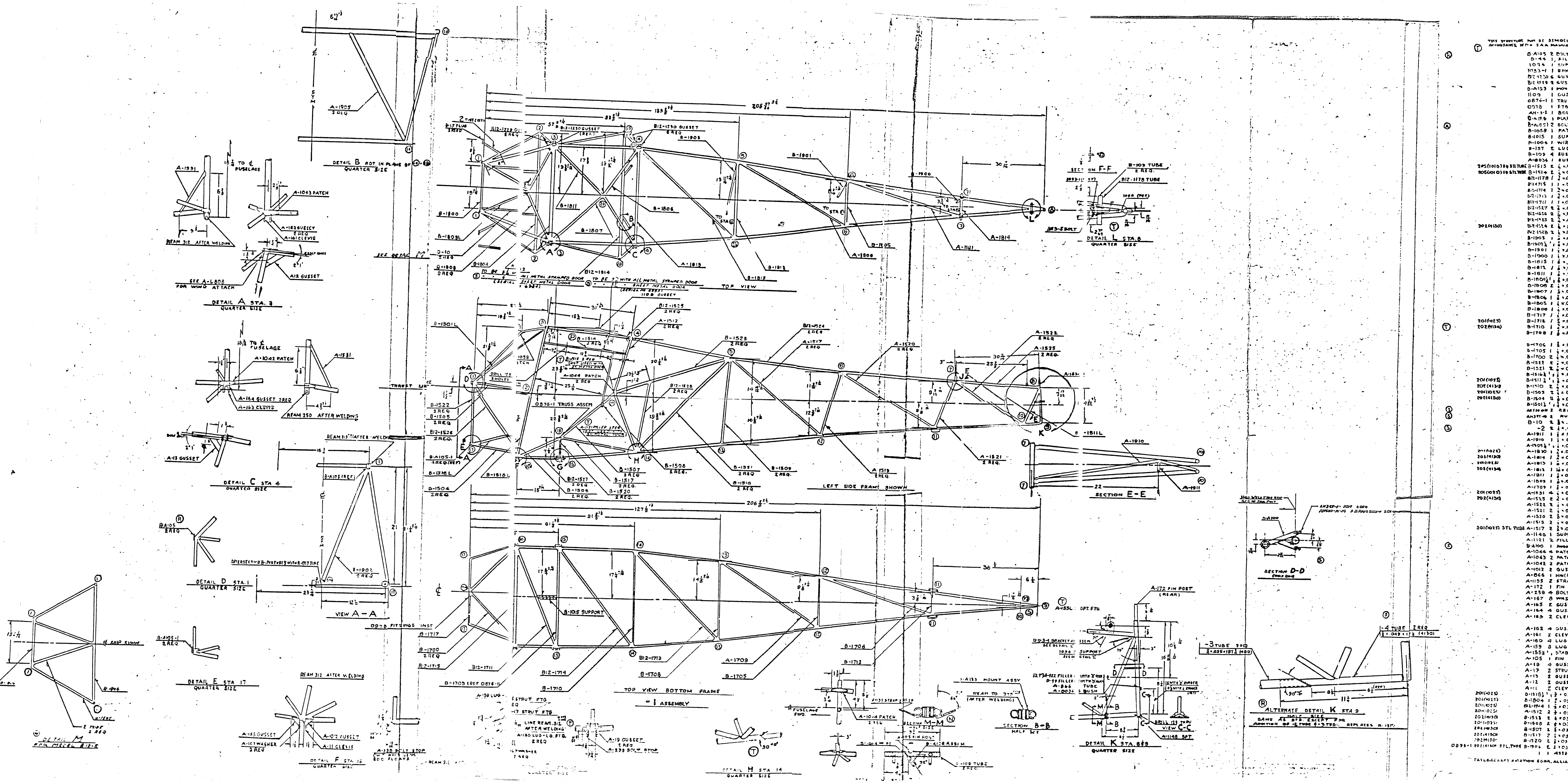
① INSTALLATION DWG B12-1108-1 FOR MODEL BC12D85
 USE PART NO 2576 IN PLACE OF BC-905
 ALL OTHER PARTS SAME AS B12-108

- ① 0834 -1
 - ② B12-1108
 - ③ B12-1108
 - ④
 - ⑤
- B12-A62 1 SHOTOFF ASSY
 - AN360-10 1 WASHER
 - AN380-2-1 1 PIN
 - B-1938-1 1 GAS CONFECTIONARY
 - AN365-428 4 NUT
 - B12-104 2 TIE ROD
 - B-A116 4 RUBBER TUBE
 - B-A301 1 ELBOW / SCREW
 - B-669 1 SPRING
 - BC-905 1 GAS LINE
 - B-A305 1 SHUT-OFF
 - B-A35 1 TANK
 - B12-1108 1 INSTAL

BC12-D-85
 N 2 1/4" ADDED NOTE FOR BC12D85 1/4 KT BY B12-1165
 G 2 1/4" BC-905 WAS 8 - 5005 AN365 1/4 KT BY B12-1165
 F 2 1/4" 1938-2 WAS B1938-1 1/4 KT BY B12-1165
 E 2 1/4" ADDED 0797 ALTERNATE 1/4 KT BY B12-1165
 D 2 1/4" ADDED 0797 ALTERNATE 1/4 KT BY B12-1165
 C 2 1/4" ADDED B-A116 1-4 GC. C/A B12-1165
 B 2 1/4" ADDED B-A116 1-4 GC. C/A B12-1165
 A 2 1/4" ADDED B-A116 1-4 GC. C/A B12-1165

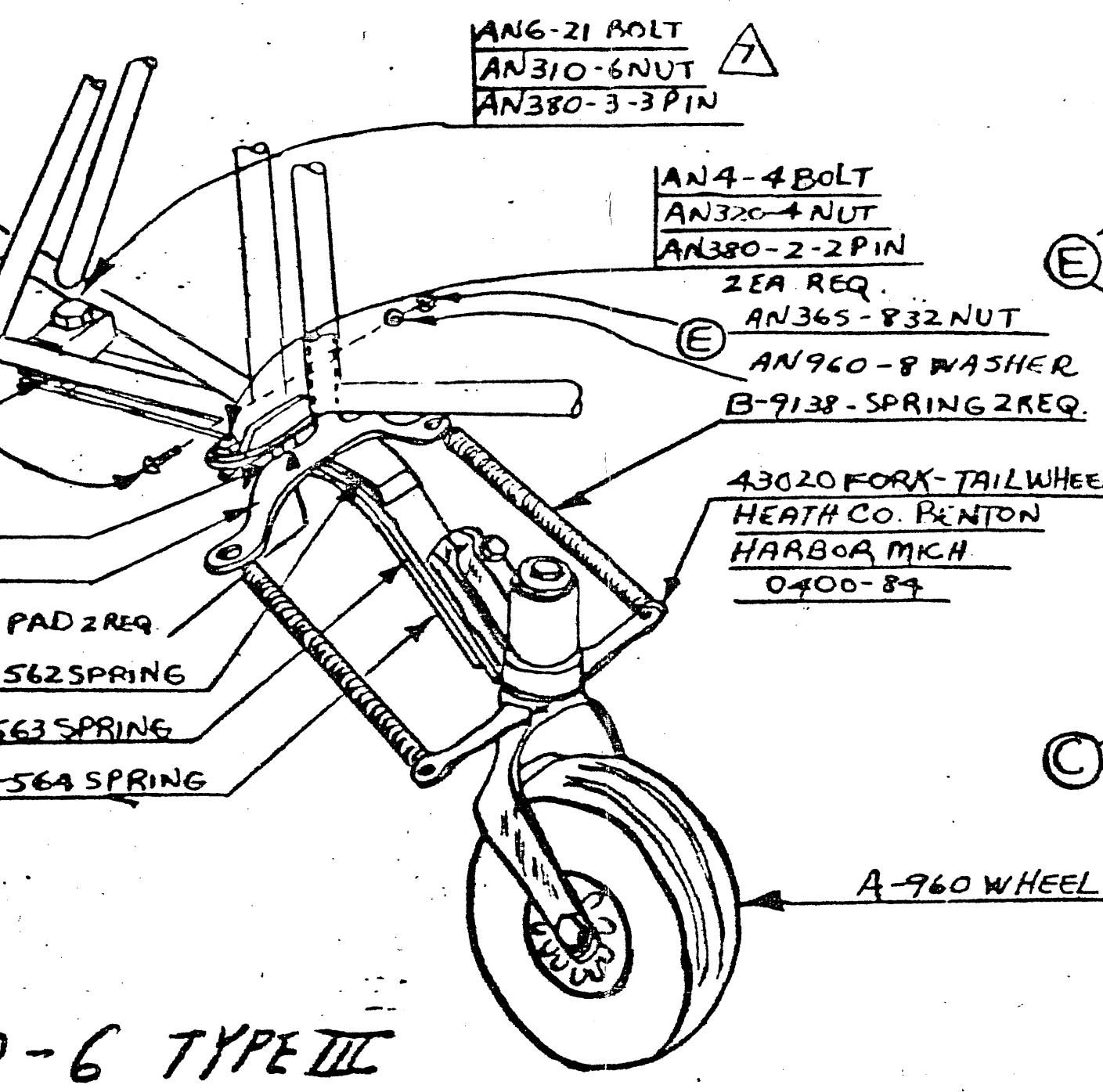
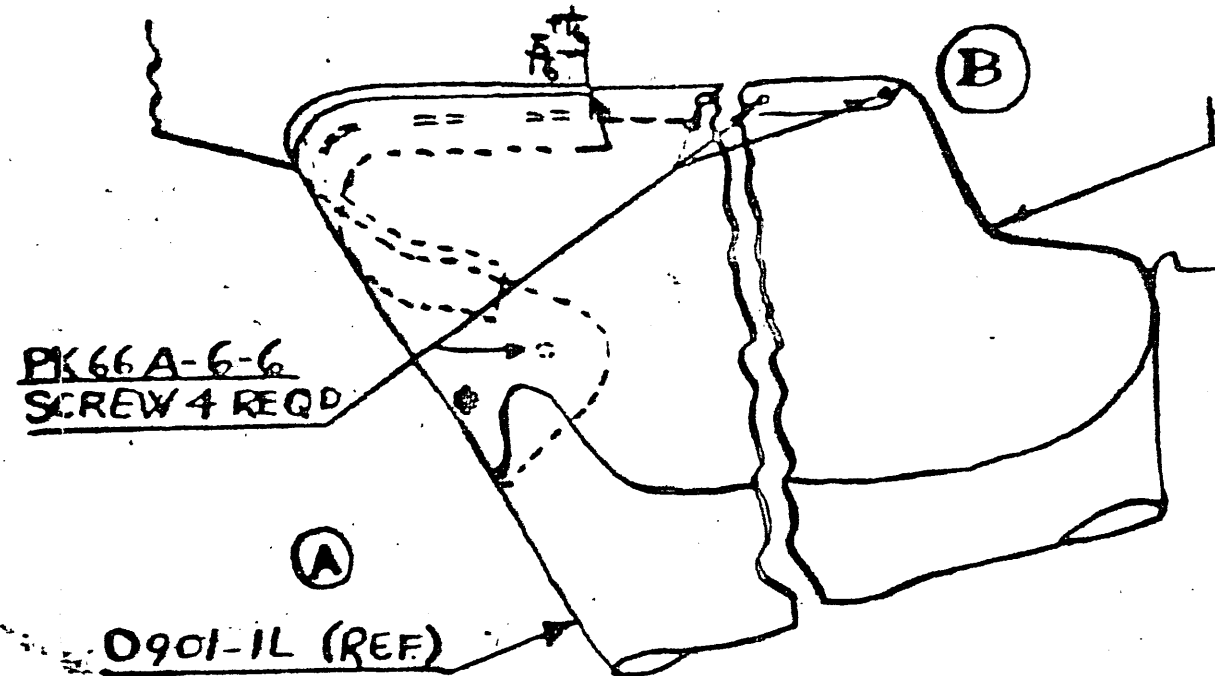
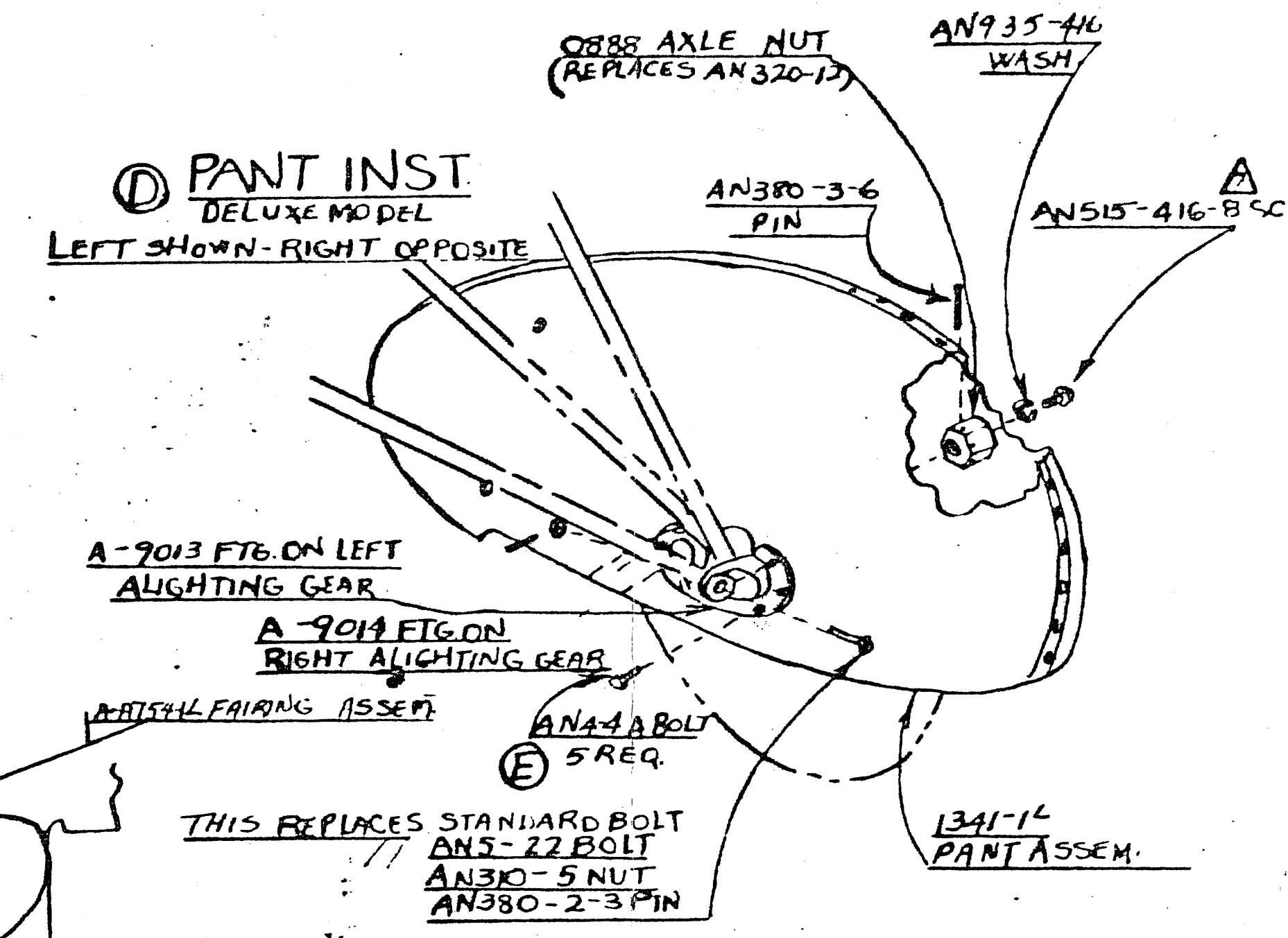
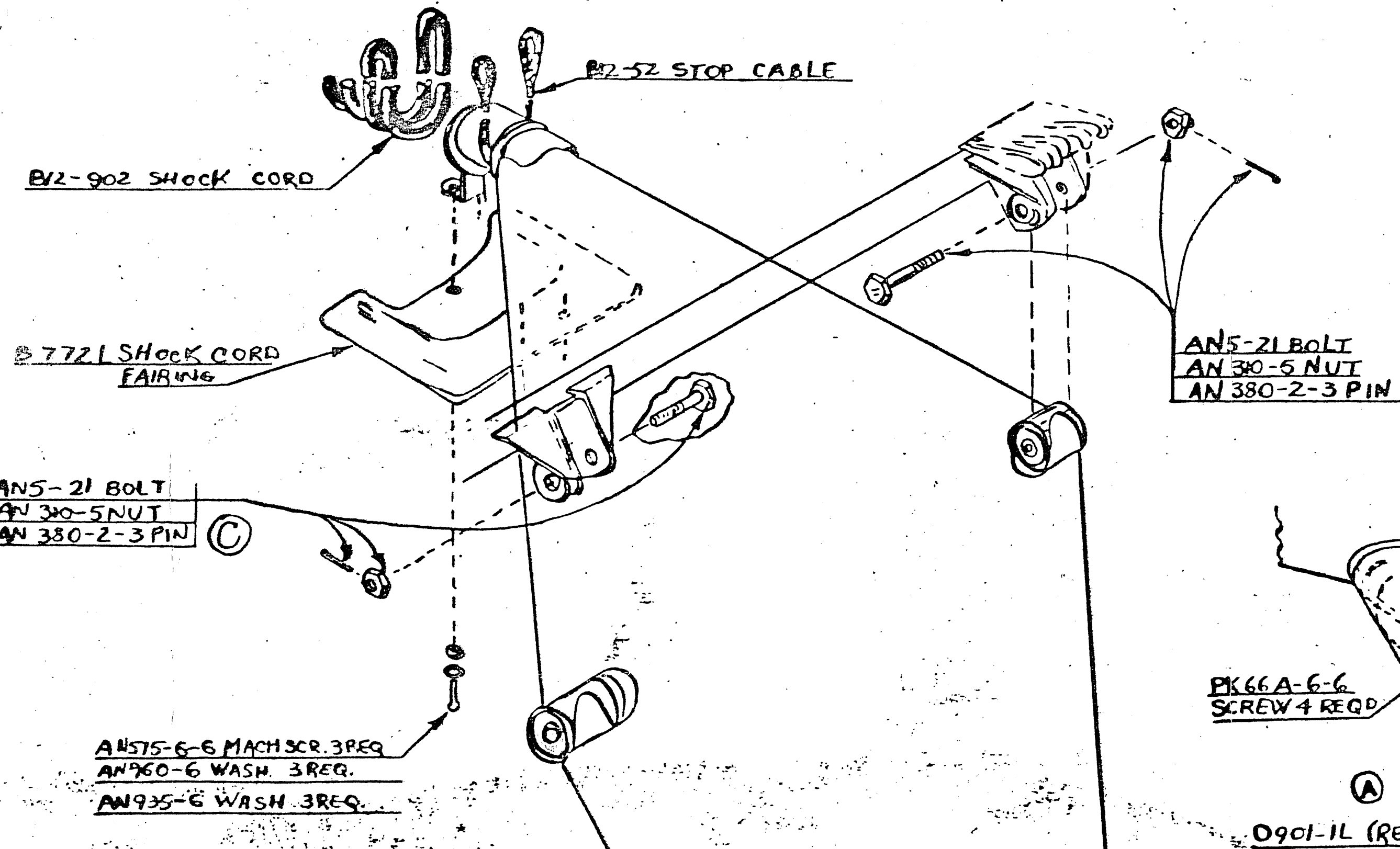
TAYLORCRAFT AVIATION CORP. ALLIANCE, O.
 1000 W. 10TH ST. ST. LOUIS, MO. 63103
 TEL. 314-781-1100
 FAX 314-781-1101
 WWW.TC-CORP.COM

FUSELAGE GAS TANK INSTALLATION B12-1108



THIS SPECIFICATION IS THE PROPERTY OF BELL & HOWELL COMPANY AND IS NOT TO BE REPRODUCED OR TRANSMITTED IN ANY FORM OR BY ANY MEANS, ELECTRONIC OR MECHANICAL, INCLUDING PHOTOCOPYING, RECORDING, OR BY ANY INFORMATION STORAGE AND RETRIEVAL SYSTEM.

201(1025)
201(1030)
201(1035)
201(1040)
201(1045)
201(1050)
201(1055)
201(1060)
201(1065)
201(1070)
201(1075)
201(1080)
201(1085)
201(1090)
201(1095)
201(1100)
201(1105)
201(1110)
201(1115)
201(1120)
201(1125)
201(1130)
201(1135)
201(1140)
201(1145)
201(1150)
201(1155)
201(1160)
201(1165)
201(1170)
201(1175)
201(1180)
201(1185)
201(1190)
201(1195)
201(1200)
201(1205)
201(1210)
201(1215)
201(1220)
201(1225)
201(1230)
201(1235)
201(1240)
201(1245)
201(1250)
201(1255)
201(1260)
201(1265)
201(1270)
201(1275)
201(1280)
201(1285)
201(1290)
201(1295)
201(1300)
201(1305)
201(1310)
201(1315)
201(1320)
201(1325)
201(1330)
201(1335)
201(1340)
201(1345)
201(1350)
201(1355)
201(1360)
201(1365)
201(1370)
201(1375)
201(1380)
201(1385)
201(1390)
201(1395)
201(1400)
201(1405)
201(1410)
201(1415)
201(1420)
201(1425)
201(1430)
201(1435)
201(1440)
201(1445)
201(1450)
201(1455)
201(1460)
201(1465)
201(1470)
201(1475)
201(1480)
201(1485)
201(1490)
201(1495)
201(1500)



AN6-21 BOLT
AN310-6 NUT
AN380-3-3 PIN

AN515-8-18 M. SCREW

-2A		A-1754	1	FAIRING MESH
-3		AN760-8	1	WASHER
-3		AN365F32	1	NUT
-3		AN515-18	1	M. SCREW
-2B		PK66A-6-6	4	SCREW
-3		AN380-3-3	1	PIN
-3		AN960-6	3	A
-3		AN935-6	3	WASH.
-3		AN575-6	3	M. S.
-3		AN380-2-3	2	A
-2A			1	A
-3		AN380-2-2	2	PIN
-3		AN320-4	2	A
-3		AN310-6	1	NUT
-3		AN6-21	1	A
-3		AN5-21	2	A
-2A		AN5-20	1	A
-3		AN4-4	2	BOLT

-2A		AN305	2	NUT
-3	HEATHCO	43020	1	FORK/TAIL WHEEL
-2A		0301	1	GEAR ASSEM ALIGHTING
-3		B12-1216	2	SPACER
-3		B2-902	1	SHOCK CORD
-2A		B12-52	1	SEPCABLE
-3		B-9138	2	SPRING
-2A		B-772L	1	FAIRING
-3		B-564	1	A
-3		B-563	1	A
-3		B-562	1	SPRING
-3		A-5027	1	CLIP
-3		A-5018	2	PAD
-2A		A-5010	1	SPRING
-3		A-960	1	WHEEL
-3		A-576	1	A
-2A		A-572	1	ROD
-3			1	ALIGHTING GEAR
-3			1	ALIGHTING GEAR

0866-1				0866-1	1	INSTALLATION
0866-1				0866-1	1	INSTALLATION
TAYLOR CRAFT AVIATION CORP. ALLIANCE O.						
ALIGHTING GEAR INSTALLATION 0866						

0901-1L GEAR ASSEMBLY-ALIGHTING

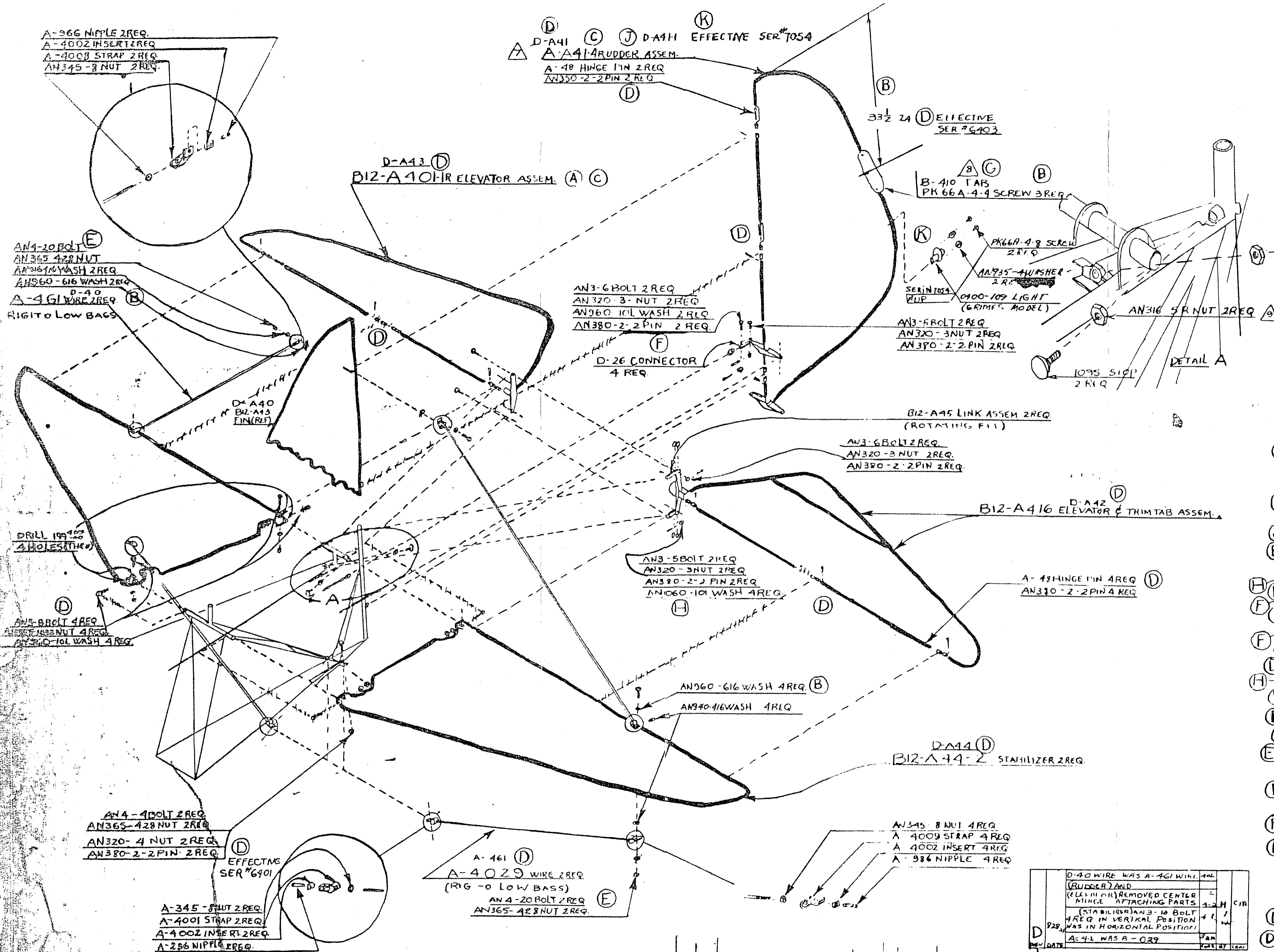
-2L INSTALLATION ALIGHTING GEAR-MAIN

6.00-6 TYPE III

-1 INSTALLATION ALIGHTING GEAR

-3 INSTALLATION ALIGHTING GEAR AUX.

AN4-4 BOLT 5 REQ. WAS 6 REQ.	1/4	CLIP	1
B-9137, AN515-8-18, AN365-832, B-9138 SPRING, B-562 SPRING, B-563 SPRING, B-564 SPRING, A-5018 PAD 2REQ.	2-4	CLIP	1
A-5027 CLIP	1	CLIP	1
AN5-21 BOLT WAS AN5-20 BOLT	3	H	3
ADDED DETAIL INST - A-792 & A-793 - SPRKS			



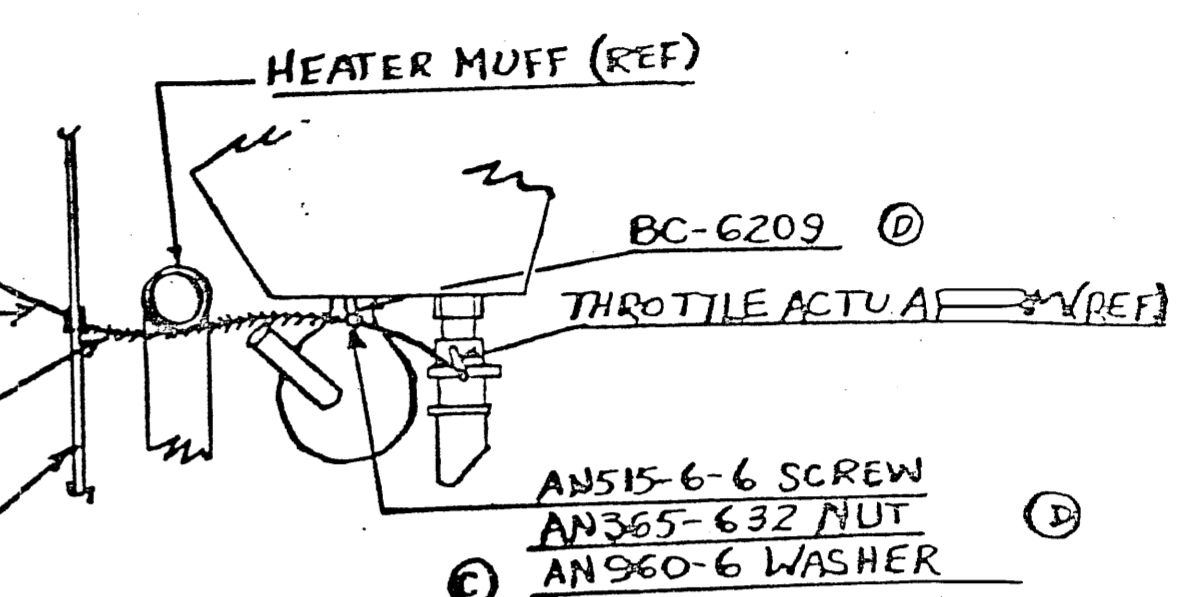
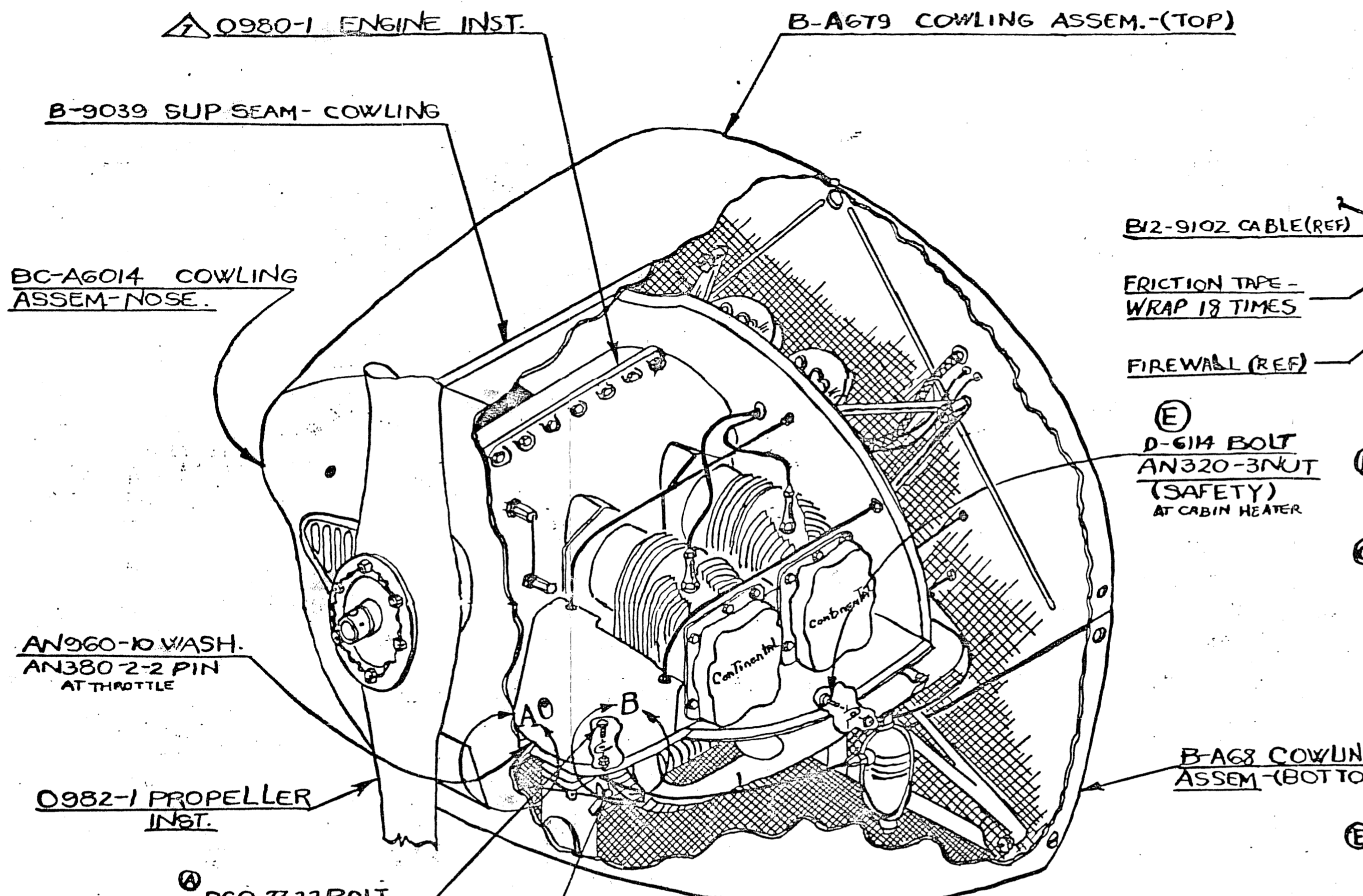
REV	DATE	DESCRIPTION	BY	CHK
K	27	CHANGES TAIL LIGHT ATTACHMENT PARTS EFFECTIVE SER#7054 APPROVED	J	A
J	7	CHANGED A-41 WAS D-MISER BC3721	J	A
H		ADDED NOTE 9		
H		ADDED DETAIL A		
H		1095 STOP, AN316 5R NUT		
G		ADDED NOTE 8 RO 3630		
F	11	ADDED AN3-6 BOLT 15 9601C MAXIMUM RO 2-22 BOLT ADDLER FILE CONNECTOR	E	C
E	14	AN4-20 BOLT W/AN4-17 139 50	E	C
D	11	CALLED D-40 WIRE FOR TAIL CONTACT WITH ALTERNATIVES IN NOTE 7	D	A
C				
B				
A				

REV	DATE	DESCRIPTION	BY	CHK
D	25	ADDED AN3-6 BOLT 2REQ AN310-4 2 AN345-8 8 AN320-3 8 AN345-428 3 AN345-1022 4 AN34-34 2 AN4-17 1 AN4-4 2 AN3-13 4 AN3-6 4 AN3-3 4 AN4 20 3 B12-A416 1 B12-A416 1 B12-A401-1R 1 B12-A42 2 B12-A43 2 B12-A44 2 D-26 4 1095 2 A-4029 2 A-4009 4 A-2009 2 A-400Z 8 A-4001 2 A-056 5 A-431 2 AN 18 6 A-A 424 1	D	A
C				
B				
A				

REV	DATE	DESCRIPTION	BY	CHK
		AN935-4 2 W/ASHER		
		PK66A-4-4 2 SCREW		
		0400-109 1 TAIL LIGHT		
		D-40 2		
		A 461 2 WIRE		
		D-A 4 2 STABILIZER ASSEM		
		D-A43 1 ELEVATOR ASSEM		
		D-A42 1 ELEVATOR		
		D-A41 1 RUDDER ASSEM		
		PK66A-4-4 3 SCREW		
		B-410 1 TAB		
		AN940-416 6		
		AN960-616 6		
		AN960-10 10 WASH		
		AN310-22 16 PIN		
		AN310-4 2		
		AN345-8 8		
		AN320-3 8		
		AN345-428 3		
		AN345-1022 4 NUT		
		AN34-34 2 NUT		
		AN4-17 1		
		AN4-4 2		
		AN3-13 4		
		AN3-6 4		
		AN3-3 4 BOLT		
		AN4 20 3 NUT		
		B12-A416 1 ELEVATOR & TRIM TAB ASSEM		
		B12-A401-1R 1 ELEVATOR ASSEM		
		B12-A42 2 LINK ASSEM		
		B12-A43 2 STABILIZER		
		D-26 4 CONNECTOR		
		1095 2 STOP		
		A-4029 2 WIRE		
		A-4009 4		
		A-2009 2 STRAP		
		A-400Z 8 INSERT		
		A-4001 2 STRAP		
		A-056 5 NIPPLE		
		A-431 2 WIRE		
		AN 18 6 SINGLE PIN		
		A-A 424 1 RUDDER ASSEM		

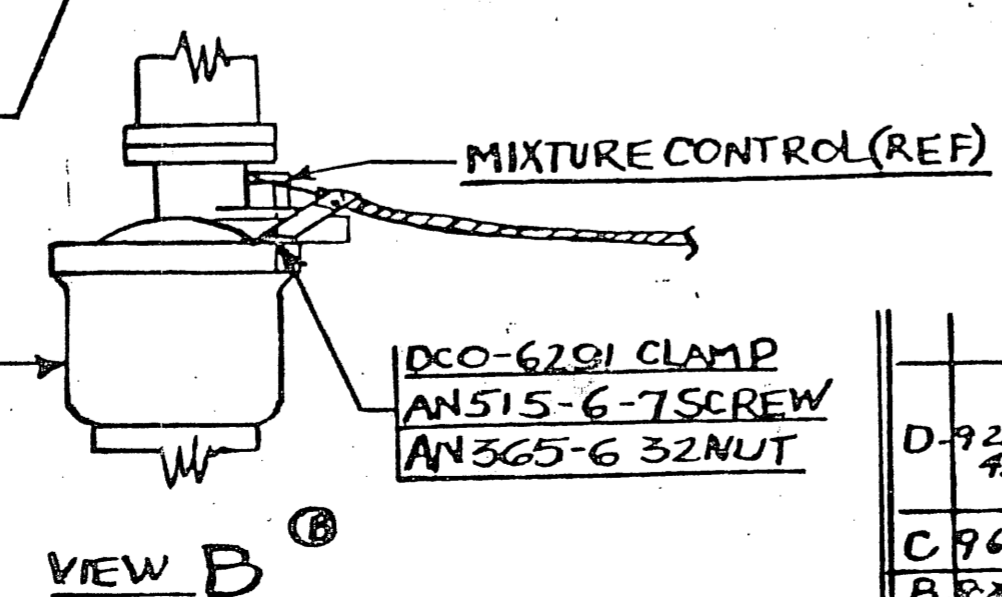
REV	DATE	DESCRIPTION	BY	CHK
		ADDED AN3-6 BOLT 2REQ AN310-4 2 AN345-8 8 AN320-3 8 AN345-428 3 AN345-1022 4 AN34-34 2 AN4-17 1 AN4-4 2 AN3-13 4 AN3-6 4 AN3-3 4 AN4 20 3 B12-A416 1 B12-A416 1 B12-A401-1R 1 B12-A42 2 B12-A43 2 B12-A44 2 D-26 4 1095 2 A-4029 2 A-4009 4 A-2009 2 A-400Z 8 A-4001 2 A-056 5 A-431 2 AN 18 6 A-A 424 1		
		ADDED AN3-6 BOLT 15 9601C MAXIMUM RO 2-22 BOLT ADDLER FILE CONNECTOR	E	C
		AN4-20 BOLT W/AN4-17 139 50	E	C
		CALLER D-40 WIRE FOR TAIL CONTACT WITH ALTERNATIVES IN NOTE 7	D	A
		AN310-22 16 PIN		
		AN310-4 2		
		AN345-8 8		
		AN320-3 8		
		AN345-428 3		
		AN345-1022 4 NUT		
		AN34-34 2 NUT		
		AN4-17 1		
		AN4-4 2		
		AN3-13 4		
		AN3-6 4		
		AN3-3 4 BOLT		
		AN4 20 3 NUT		
		B12-A416 1 ELEVATOR & TRIM TAB ASSEM		
		B12-A401-1R 1 ELEVATOR ASSEM		
		B12-A42 2 LINK ASSEM		
		B12-A43 2 STABILIZER		
		D-26 4 CONNECTOR		
		1095 2 STOP		
		A-4029 2 WIRE		
		A-4009 4		
		A-2009 2 STRAP		
		A-400Z 8 INSERT		
		A-4001 2 STRAP		
		A-056 5 NIPPLE		
		A-431 2 WIRE		
		AN 18 6 SINGLE PIN		
		A-A 424 1 RUDDER ASSEM		

NOTES: 1. FOR C.A.A. REF. ONLY, PART IS OR C.A.A. APP. EQUIV.
 2. WHENEVER AN OR EQUIV. BOLT & SCREW IS CALLED OUT *
 MATCHING AN OR EQUIV. WASHERS (U. MAX.) MAY BE USED *
 3. SPEC. NO. AND FINISH NO. ARE TYPE STANDARD A
 4. ALL FIN. SPECS TO LATEST REVISIONS.
 5. APOSTROPHES - UNLESS OTHERWISE STATED.
 6. ALL SAFETY TO SPEC. NO. 112 OR TO MFG. SECT.
 7. INSTALLATION 0868-2, ADDL. 0868-1
 USE 0580-2 INSTEAD OF 0980-1



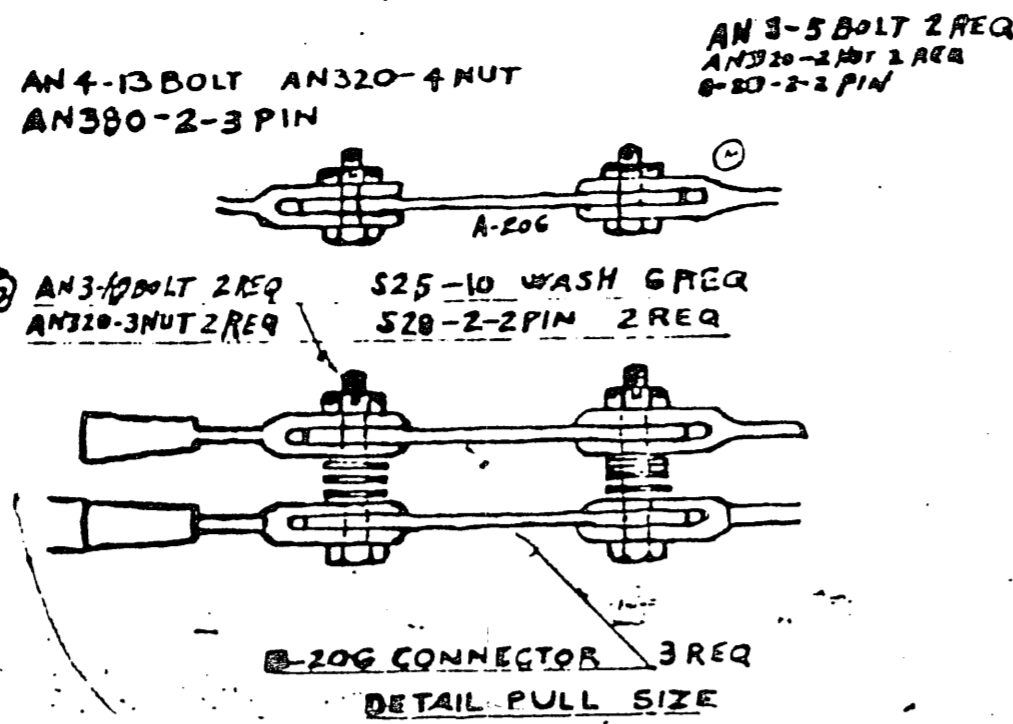
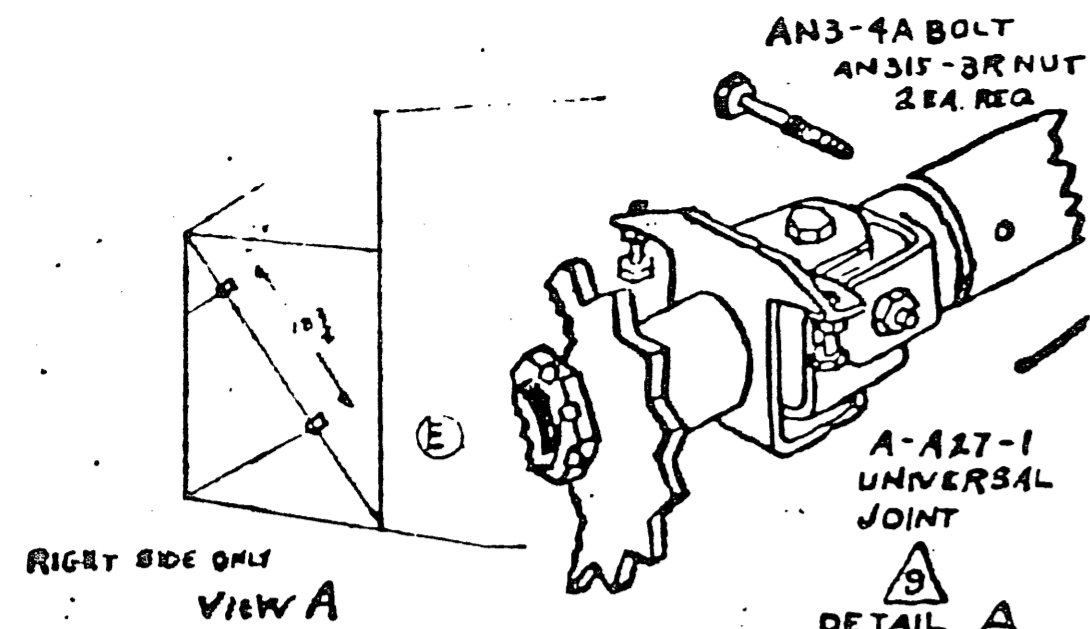
VIEW A
FROM OPP SIDE

F		B-669	1	SPRING	
		AN960-6	1	WASHER	
		AN515-6-6	1	SCREW	
		BC-6209	1	CLAMP	
G		COMMERCIAL FRICTION TAPE		1/2 X 25	
		AN760-10	1	WASH.	
		AN380-2-2	1	PIN	
				0868	
		AN320-4	1		
		AN365-6-32	2		
		AN320-3	2	NUT	
		AN515-6-7	1	SCREW	
		DCO-7322	1		
E		D-6114	2	BOLT	
		0982-1	1	PROPELLER	
		BC-A6014	1	COWLING NOSE	
		B-A679	1	COWLING ASSEM. TOP	
		0980-1	1	ENGINE INST.	
		BC-6209	1	CLAMP	
		B-A681	1	COWLING BOT.	
		B-9039	1	SUP SEAM	
		0868-1			
		0863-1			
		0868-1			



VIEW B

D-922-45	AN960-6 WASHER ADDED AN365-6-32 NUT (CALLOUT EX) AN515-6-6 SCREW 3/4 (03558) ADDED BC-6209 CALLOUT 3/4	1-9	TREM
C-964	ADDED VIEW-A ADDED TO NOTE 6	1-4	T.P. EM
B-824	ADDED DCO-6209 AN515-6-7 AN515-6-32 ADDED VIEW-A FO3108	2-3	T.B. EM
A-822-4	DCO-7322 WAS AN4-4 INCORPORATED 3107	2-3	T.P. EM



A-229 PULLEY 2REQ
AN3-5 BOLT 2REQ
AN320-3 NUT 2REQ
AN380-2-2 PIN 2REQ
A-920 BUSHING 2REQ

B-A28 CABLE ASSEM-ELEVATOR
B-A29 CABLE ASSEM-ELEVATOR

THESE CABLES ATTACH TO
EMPENNAGE INSTAL. 04971

A-228 PULLEY 4REQ
A-920 BUSHING 4REQ
AN3-6 BOLT 4REQ
AN320-3 NUT 4REQ
AN380-2-2 PIN 4REQ

THESE CABLES ATTACH TO
WING INSTAL. 0482-1

B12-A21 CABLE ASSEM

A-27 UNIVERSAL JOINT
AN4-10 BOLT
AN320-4 NUT
AN380-2-2 PIN
A-230-1 SPROCKET
A-900 KEY
AN320-3 NUT
AN380-3-3 PIN 1REQ

A-228 PULLEY 2REQ
AN3-10 BOLT 2REQ
AN310-3 NUT 2REQ
AN380-2-2 PIN 2REQ
AN920 BUSHING 2REQ
AN380-2-2 PIN 2REQ

AN316-636
AN900-6 (2)
AN320-8 NUT
RIGHT SIDE ONLY

A-228 PULLEY 2REQ
AN3-2 BOLT 2REQ
AN320-3 NUT 2REQ
AN380-2-2 PIN 2REQ
AN920 BUSHING 2REQ

AN3-10 BOLT 2REQ
AN320-3 NUT 2REQ
AN380-2-2 PIN 2REQ

A-228 PULLEY 2REQ
AN229 PULLEY
AN3-17 BOLT
AN320-3 NUT
AN380-2-2 PIN
AN920 BUSHING 3REQ

B-A25 PEDAL ASSEM
2REQ
AN311-29 PIN (FLAT HD.) 2REQ
AN416-22 PIN (SAFETY) 2REQ

A-229 PULLEY AN3-5 BOLT AN320-3 NUT AN380-2-2 PIN A-920 BUSHING
A-248 BUSHING 2REQ AN3-9 BOLT 2REQ AN320-3 NUT 2REQ AN380-2-2 PIN 2REQ

B-A21 BAR ASSEM L. A-1089 BEARING HOUSING 2REQ AN3-10 NUT 2REQ AN320-3 NUT 2REQ AN3-10 BOLT 2REQ AN3-4 BOLT 2REQ AN320-3 NUT 10REQ AN380-2-2 PIN

A-240 COIL SPRING 2REQ

B-A20 BAR ASSEM R.

A-250 RUBBER CHANNEL 4REQ
A-251 RUBBER CHANNEL 4REQ

B-A27-1 CABLE ASSEM. RUDDER LEFT

B-155 GUIDE 4REQ AN3-7 BOLT 4REQ AN320-3 NUT 4REQ AN380-2-2 PIN 4REQ

B12-A23 WHEEL ASSEM. CONTROL 2REQ

B-154 GUIDE 4REQ AN5-7 BOLT 4REQ AN320-3 NUT 4REQ AN380-2-2 PIN 4REQ

A-248 BLOCK 2REQ A-55-6-14 MACH. SCREW 4REQ AN335-6 WASH 4REQ AN340-6 NUT 8REQ

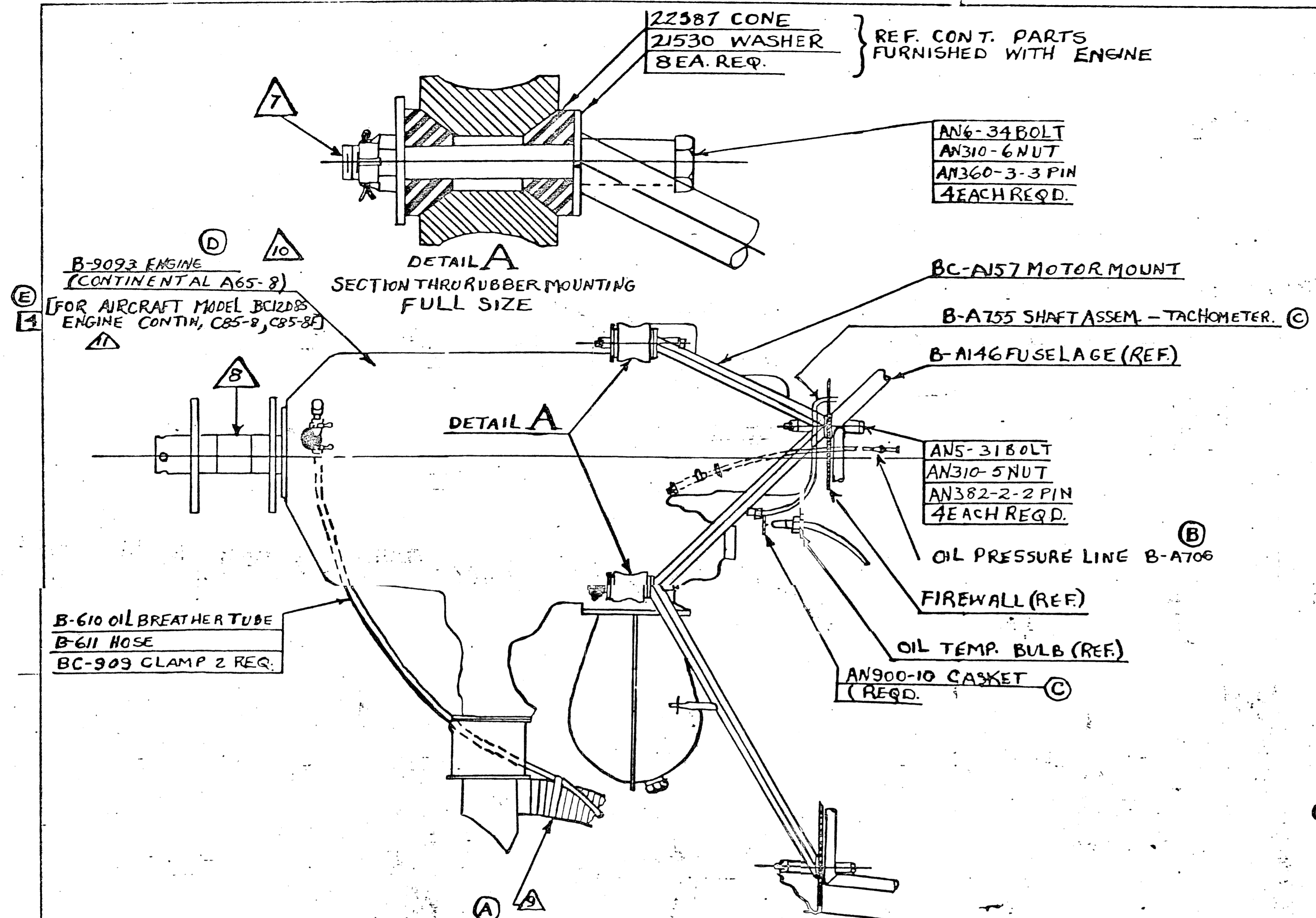
A-A23 SPROCKET ASSEM AN320-8 NUT AN380-3-3 PIN A-903 KEY

A-229 PULLEY 4REQ AN3-5 BOLT 4REQ AN320-3 NUT 4REQ AN380-2-2 PIN 4REQ A-920 BUSHING 4REQ

B-A22-2 B-A22 CONTROL COLUMN ASSEM B-27 CLAMP 2REQ B-224 SHIM 1REQ

AN3-4 BOLT 4REQ
AN310-3 NUT 4REQ
AN960-10 WASH 4REQ
AN380-2-2 PIN 4REQ

- AN5-11 2 NUT
- AN4-3 2 BOLT
- A-A27-1 1 UNIVERSAL JOINT
- AN960-10 1 WASHER
- AN315-6 4 WASHER
- AN55-6-14 4
- AN320-3-3 4
- AN320-2-3 3
- AN320-2-2 13 PIN
- AN340-6 3
- AN320-8 2
- AN320-4 2
- AN320-3 40
- AN30-3 4 NUT
- AN416-22 2 4 (SAFETY)
- AN327-29 2 PIN (SAFETY)
- AN4-13 2
- AN3-5 4
- AN960-6 2 WASHER
- AN3-10 4
- AN3-7 12
- AN3-6 6
- AN3-8 9
- AN3-4 12 BOLTS
- AN515-6 1
- B12-A2 1 CABLE ASSEM
- B-224 4 SHIM
- A-A27 1 UNIVERSAL
- B-206 2 CONNECTOR
- B-155 4
- B-154 4 GUIDE
- B901-1 1 BUMPER
- B-A23 1
- B-A28 1
- B-A27-1 1 CABLE ASSEM
- B-27 2 CLAMP
- B-A26-1 1 CABLE ASSEM
- B-A25 2 PEDAL ASSEM
- B-A22-2 1 CONTROL ASSEM
- B-A21 1 BAR ASSEM
- B-A20 1 BAR ASSEM
- A-25 1 4
- A-250 4 RUBBER CHANNEL
- A-1089 2
- A-1088 2 BEARING HOUSING
- A-320 10 BUSHING
- A-303 2 KEY
- A-248 2 BLOCK ASSEM
- A-240 2 COIL SPRING
- A-A23 1 SPROCKET ASSEM
- A-101 8 SPROCKET ASSEM
- A-229 5 PULLEY
- A-228 10 PULLEY
- A-146 6 BUSHING
- A-28 2 CLIP SPRING
- Q-976 12 CLIP SPRING
- B-A23 2 WHEEL ASSEM



- NOTES: 1. FOR C.A. REF. ONLY, MATZ #5 O.R.C.A. APPROPQ. V.
2. UNLESS OTHERWISE SPECIFIED, ALL BOLTS & SCREWS IS CALLED MATCHING IN SIZE OR EQUIV. WASHERS (1 MAX.) MAY BE USED *
3. SPEC. NO. AND FINISH NO. ARE TO CT. STANDARD *
4. ALL AN SPEC. TO LATEST REV. UNLESS OTHERWISE STATED
5. * ACTS AS INDICATES - UNLESS OTHERWISE STATED
6. ALL SAFETY WIRE TO SPEC. NO. 112.
7. DRAW UP NUTS ON AN6 BOLTS TO A TORQUE OF FROM 65 TO 75 IN. LBS. (REF. CONTINENTAL MEMO REPORT #5010)
8. PROPELLER SHAFT HUB & EXPOSED WELD PARTS NOT PROPERLY RUST PROOFED TO BE COATED WITH PAR-AL-KETONE "B" OR EQUIVALENT THINNED WITH EQUAL PARTS OF LEAD FREE GASOLINE.
9. FASTEN WITH 1/2 INCH FRICTION TAPE - 6 WRAPS.
10. ALTERNATE ENGINE, 0400-195 (CONTINENTAL A65-8F) FLANGED CRANKSHAFT.
11. 0980-2, MODEL BC12D85 USE 2575 INSTEAD OF 0966-1 USE C-85 ENGINE IN PLACE OF A-65 AS DETAILED

0980

(C)	↑			B-A755	1	SHAFT-ASSEM.
	-1			AN900-10	1	GASKET
			TAPE FRKT			1/2 x 40
	-1			B6-909	2	CLAMP
	-1			B-611	1	HOSE
	-1			B-610	1	TUBE-OIL BREATHER
(B)				B-A706	1	OIL PRESS. LINE
	-1			BC-A157	1	MOUNT
	-1			AN380-3-3	4	PIN
	-1			AN380-2-2	4	PIN
	-1			AN310-6	4	NUT
	-1			AN310-5	4	NUT
	-1			AN6-34	4	BOLT
	-1			AN5-31	4	BOLT
	-1			BC-L637	1	COOLING INSTALE
	-1			BC-L630	1	AT EXHAUST INST
(D)	-1		⚠ ⚠	B-9093	1	ENGINE-CONT.
	0980-1		⚠ ⚠	0966-1	1	FUEL INSTALL
	0868-1			0990-1	1	ENGINE INSTALL

E	1/31/48	MODEL BC12D85 & CONTINENTAL C85-8 & C85-8F ADDED	24	KT	HN
D	5/27/48	B-9093 WAS A-65-B NOTE 10 ADDED	1-3	AK	EM
C	7/29/48	ADD. B-A755	7-24	CB	CIA
B	11/30/48	ADD OIL TEMP BULB & AN900-10	1-4	JAS	CIA
A	9-4-48	B-A706 WAS DCA7081-EO 9399	1-4	LAC	CIA
		REVISED DWG OF BREATHER LINE & ADDED NOTE 9	2-4	LDS	EM

TAYLORCRAFT AVIATION CORP. ALLIANCE O.

LIMITS ON DIMS: A. FRACTIONAL, B. DECIMAL, C. ANGLES

FINISHES: 1. HAND FINISH, 2. MACHINING FINISH, 3. POLISHED, 4. ANODIZING, 5. BLACK OXIDE, 6. BLUE, 7. BRASS, 8. CHROME, 9. GILDING, 10. GALVANNEALING, 11. PHOSPHATE, 12. SILVER PLATING, 13. ZINC PLATING

DATE: 6-22-48
DRAWN BY: J.M.
CHECKED BY: J.M.
DATE: 9-1-48

ENGINE INSTALLATION
CONTINENTAL A-65 & C85

0980