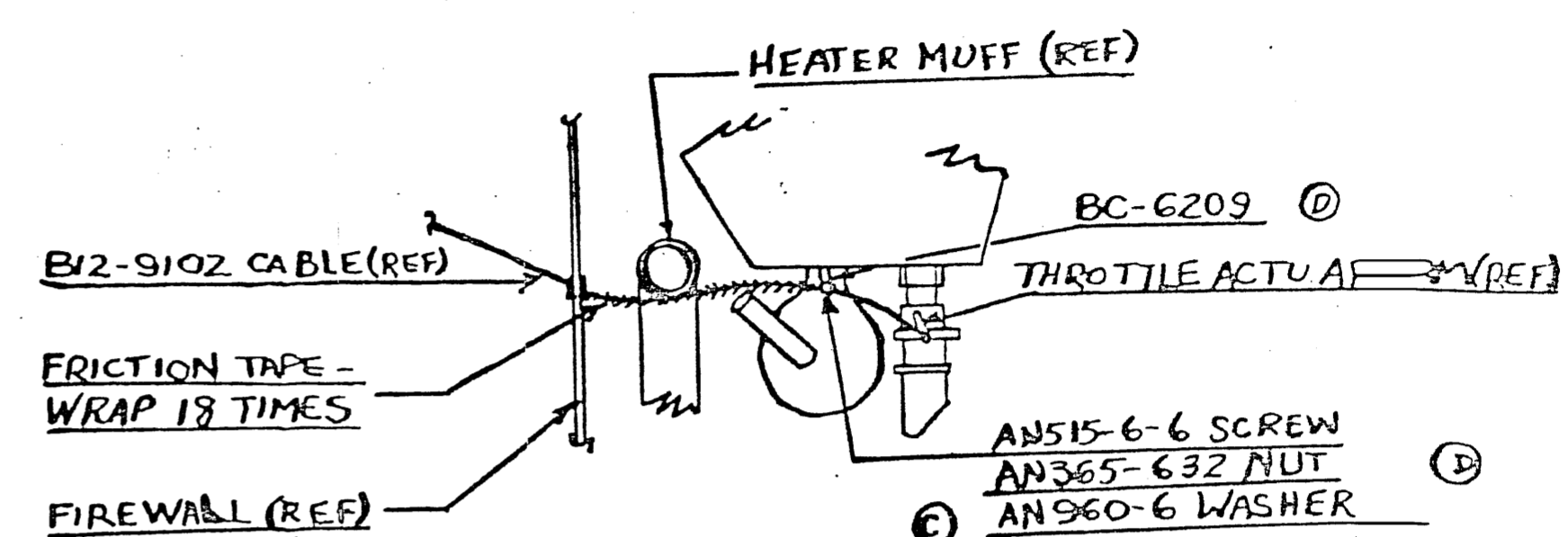
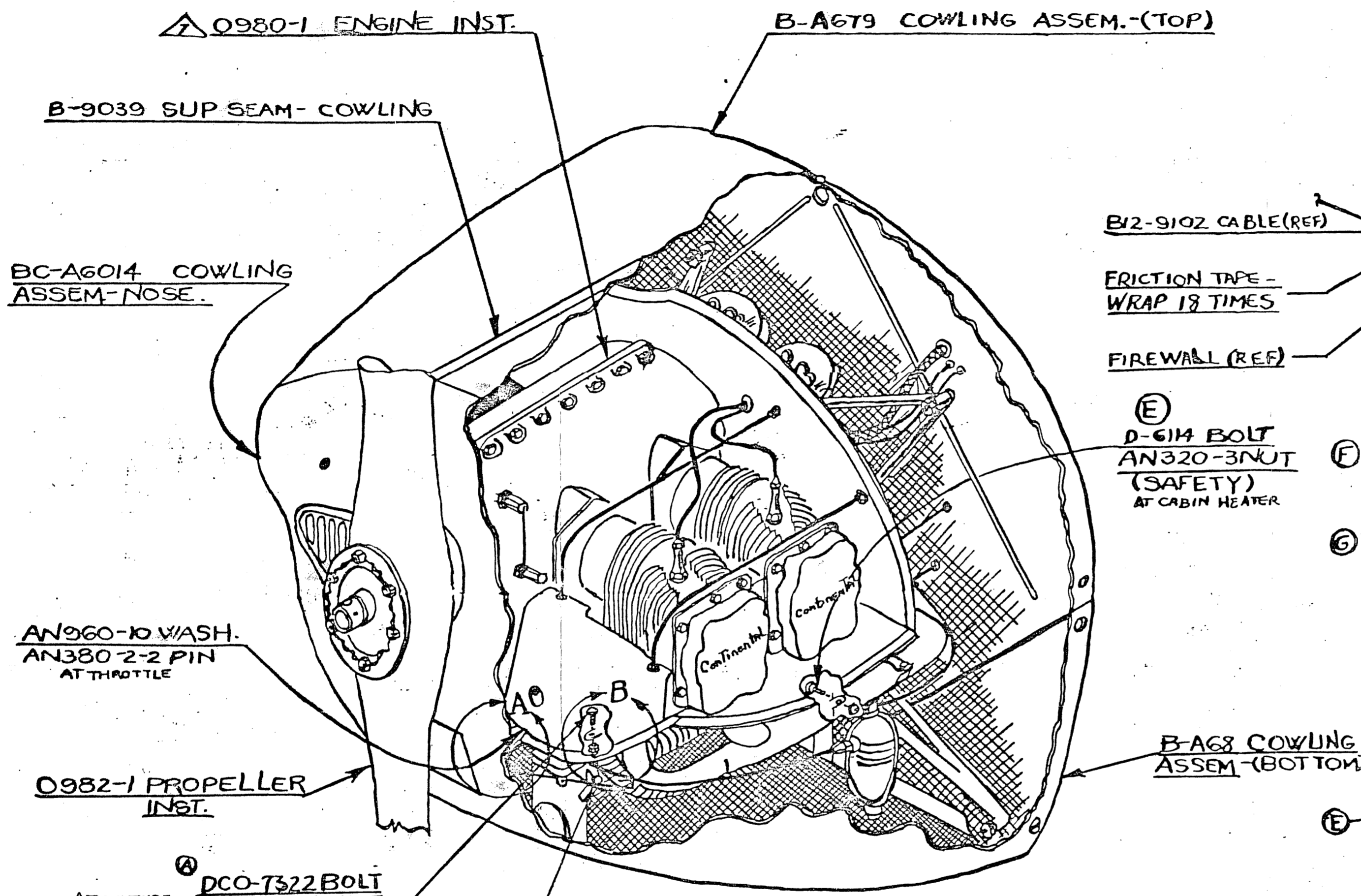


U	-1	1336	4	PATCH
V	-1	132-7116	1	LIGHT SWITCH
V	-2	S18-454	2	SCREW
V	-2	1149	1	BRACKET
V	-1	1115	1	SPACER
V	-1	D-766	1	PLACARD
V	-1	O896-1	1	INST. PANEL
V	-1	S25-10	1	WASHER
V	-1	S27-28	1	C PIN
V	-1	AN935-6	1	WASHER
V	-1	S28-68	1	NUT
V	-1	O923-11	1	DOOR ASSEMBLY
V	-1	O989-1	2	COMPART. ASSY.
V	-1	O979-1	1	DECK PANEL ASSY.
V	-1	S28-10	1	NUT
V	-2	S25-10	2	WASHER
V	-1	O400-165	7	SPEED NUT
V	-2	O400-162	34	SPEED NUT
V	-2	AN935-6	2	NUT
V	-1	S276-7	10	SCREW
V	-1	S276-8	2	MACH. SCREW
V	-1	S276-10	12	MACH. SCREW
V	-1	S276-6	6	MACH. SCREW
V	-1	S276-9	7	SCREW
V	-1	S276-12	4	MACH. SCREW
V	-2	AN3-7	2	BOLT
V	-2	B-990	1	COMPASS
V	-1	O894	1	COMPART. ASSY.
V	-1	O400-80	1	OIL PRESSURE
V	-1	O400-82	1	ALTIMETER
V	-1	O400-83	1	AIRSPEED
V	-1	O400-81	1	OIL TEMP.
V	-1	A-907	1	SWITCH MAG.
V	-1	O400-202	1	TACHOMETER
V	-1	B12-9087	1	KNOB
V	-1	B12-A62	1	ROD ASSEM.
V	-1	B12-912	1	BUSHING
V	-1	B12-916	1	FACE NUT
V	-1	B12-918	1	CABIN HEAT
V	-1	B12-917	1	MIXTURE
V	-1	B12-910	1	THROTTLE
V	-1	B12-9089	1	CARB. HEAT
V	-1	B12-9086	1	PRIMER KNOB
V	-1	B12-9085	1	GAS STUD
V	-1	B12-924	1	BUTTON
V	-1	B-7030	1	PLACARD
V	-1	A-941	1	PRIMER
V	-2	O894-1	2	COMPASS INST.
V	-1	O895-1	1	INST. ENGINE INST.

H	7-4	CARD HOLDER ASSEMBLY SCREWS	2	36	CR	EM
G	2-5	ADD WASHER	2	5	CR	EM
F	1-1	ADD MARKING TO TACH. AIR SPEED, ADD DIM. 3/2	1	1	CR	EM
E	1-1	REDRAWN FROM EOS	1	1	CR	EM

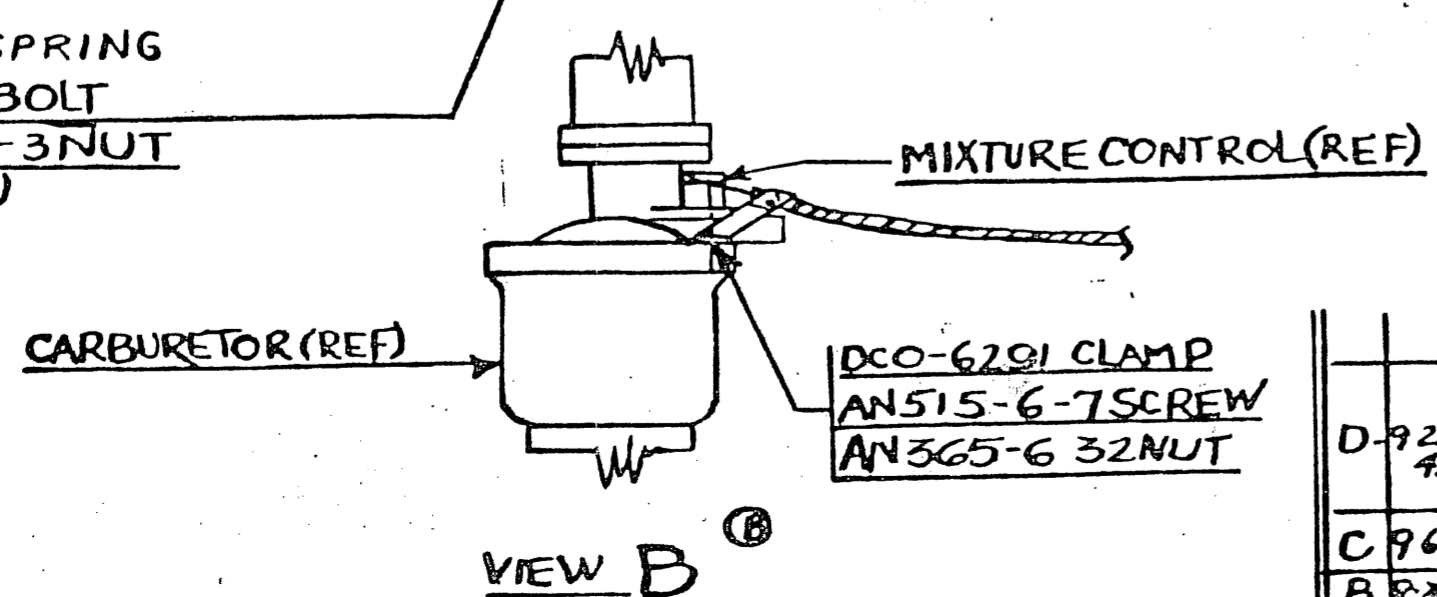
TAYLORCRAFT AVIATION CORP., ALLIANCE CO.
 INSTRUMENT & ENGINE CONTROL INSTALLATION
 O894

NOTES: 1. FOR C.A.A. REF. ONLY, PART IS OR C.A.A. APP. EQUIV.
 2. WHENEVER AN OR EQUIV. BOLT & NUT IS CALLED OUT, MATCHING AN OR EQUIV. WASHERS (U. MAX.) MAY BE USED *
 3. SPEC. NO. AND FINISH NO. ARE TYPE STANDARD A
 4. ALL PARTS TO LATEST REVISIONS.
 5. APOSTROPHES - UNLESS OTHERWISE STATED.
 6. ALL SAFETY TO SPEC. NO. 112 OR TO MFG. SPEC.
 7. INSTALLATION 0868-2, ADDL. 0868-1 USE 0580-2 INSTEAD OF 09-30-1

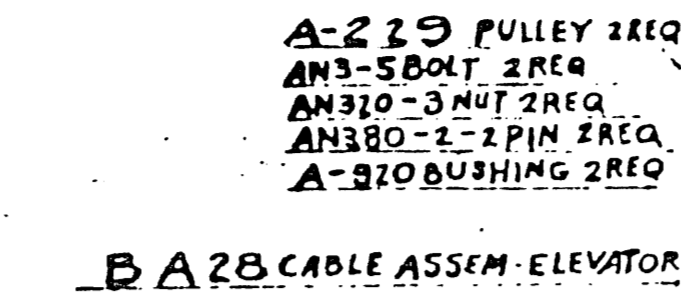
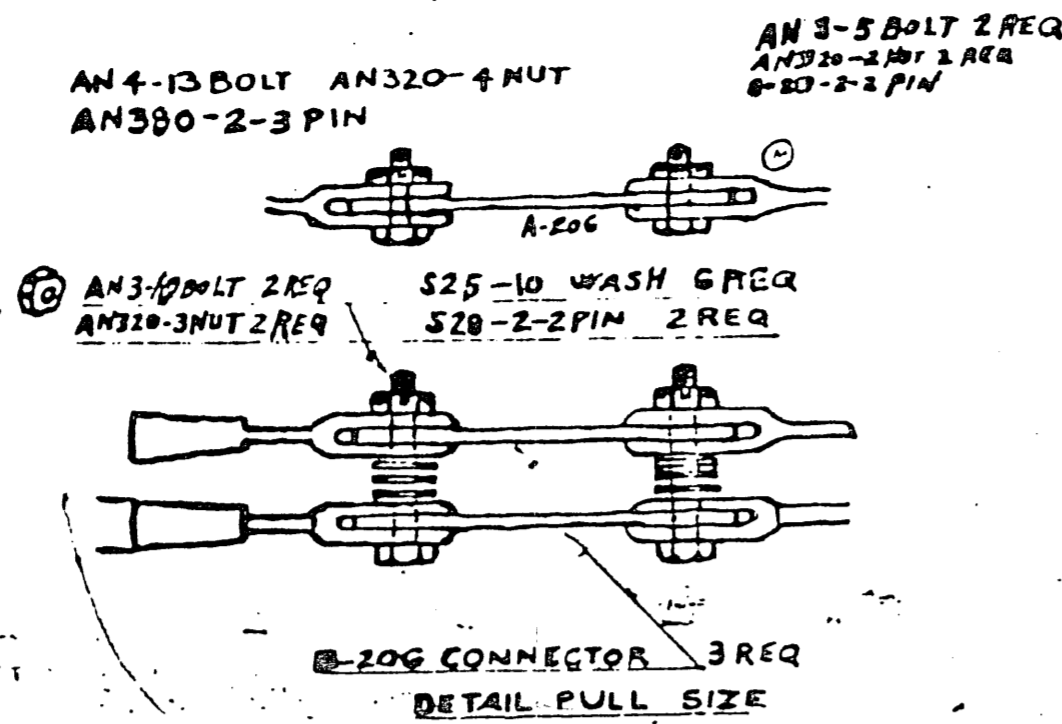
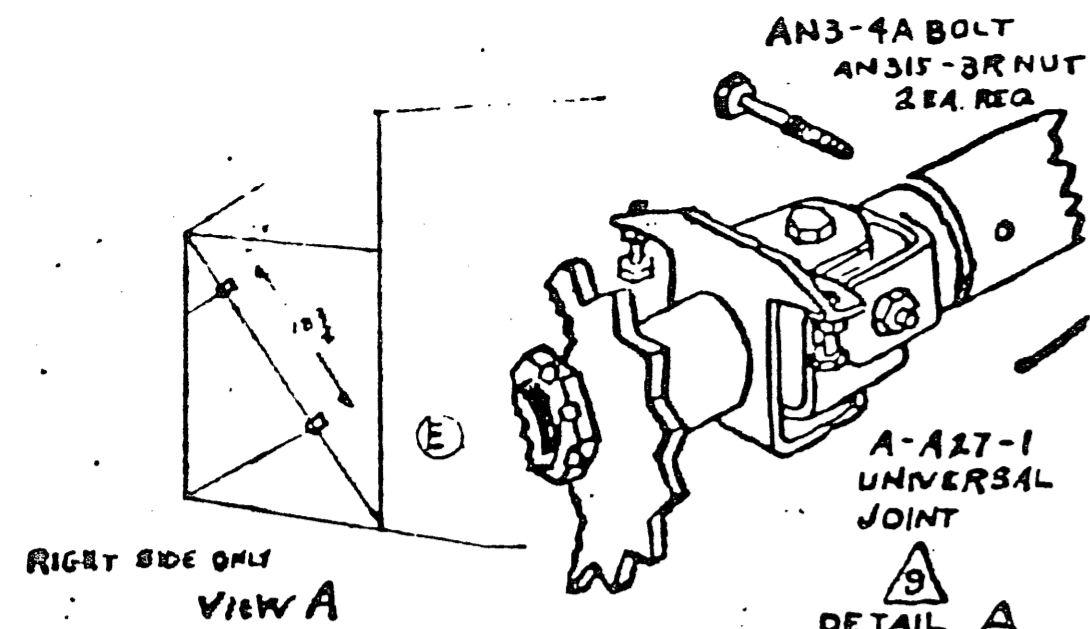


VIEW A
FROM OPP SIDE

F	B-669	1	SPRING
	AN960-6	1	WASHER
	AN515-6-6	1	SCREW
	BC-6209	1	CLAMP
G	COMMERCIAL FRICTION TAPE	1/2	X25
	AN760-10	1	WASH.
	AN380-2-2	1	PIN
			0868
	AN320-4	1	
	AN365-6-32	2	
	AN320-3-2	1	NUT
	AN515-6-7	1	SCREW
	DCO-7322	1	
E	D-6114	2	BOLT
	0982-1	1	PROPELLER
	BC-A6014	1	COWLING NOSE
	B-A679	1	COWLING ASSEM. TOP
	0980-1	1	ENGINE INST.
	BC-6209	1	CLAMP
	B-A681	1	COWLING BOT.
	B-9039	1	SUP SEAM
	0868-1		
	0863-1		
	0868-1		INST.



D-922-45	AN960-6 WASHER ADDED AN365-6-32 NUT (CALLOUT EX) AN515-6-6 SCREW 3/4 (03558) ADDED BC-6209 CALLOUT 3/4	1-9	TREM
C-964	ADDED VIEW-A ADDED TO NOTE 6	1-4	T.P. EM
B-824	ADDED DCO-7322 AN515-6-7 AN365-6-32 ADDED VIEW A DCO-7322 WAS AN4-4 INCORPORATED IN 3107	2-3	T.B. EM
A-822-4		2-3	T.P. EM



THESE CABLES ATTACH TO
EMPENNAGE INSTAL. 04971

A-228 PULLEY 4REQ
A-920 BUSHING 4REQ
AN3-6 BOLT 4REQ
AN320-3 NUT 4REQ
AN380-2-2 PIN 4REQ

A-27 UNIVERSAL JOINT

AN4-10 BOLT
AN320-4 NUT

AN380-2-2 PIN

A-230-1 SPROCKET
A-906 KEY
AN320-3 NUT
AN380-3-3 PIN 1REQ

A-228 PULLEY 2REQ
AN3-10 BOLT 2REQ
AN310-3 NUT 2REQ
AN380-2-2 PIN 2REQ
AN920 BUSHING 2REQ
AN380-2-2 PIN 2REQ

AN316-636
AN901-6 (2)
AN320-8 NUT
RIGHT SIDE ONLY

A-228 PULLEY 2REQ
AN3-2 BOLT 2REQ
AN320-3 NUT 2REQ
AN380-2-2 PIN 2REQ
AN920 BUSHING 2REQ

AN3-10 BOLT 2REQ
AN320-3 NUT 2REQ
AN380-2-2 PIN 2REQ

A-228 PULLEY 2REQ
AN229 PULLEY
AN3-17 BOLT
AN320-3 NUT
AN380-2-2 PIN
AN920 BUSHING 3REQ

B-A25 PEDAL ASSEM
2REQ
AN311-29 PIN (FLAT HD.) 2REQ
AN416-22 PIN (SAFETY) 2REQ

A-229 PULLEY AN3-5 BOLT AN320-3 NUT AN380-2-2 PIN A-920 BUSHING
A-248 BUSHING 2REQ AN3-9 BOLT 2REQ AN320-3 NUT 2REQ AN380-2-2 PIN 2REQ

B-A21 BAR ASSEM L. A-1089 BEARING HOUSING 2REQ AN3-10 NUT 2REQ AN320-3 NUT 2REQ AN3-10 BOLT 2REQ AN3-4 BOLT 8REQ AN320-3 NUT 10REQ AN380-2-2 PIN

A-240 COIL SPRING 2REQ

B-A20 BAR ASSEM R.

B12-A21 CABLE ASSEM

THESE CABLES ATTACH TO
WING INSTAL. 0482-1

B-206 CONNECTOR 3REQ
DETAIL PULL SIZE

B-A28 CABLE ASSEM-ELEVATOR

A-146 BUSHING 6REQ
Q476 CLIP SPRING 12REQ

A-250 RUBBER CHANNEL 4REQ

A-251 RUBBER CHANNEL 4REQ

B-A27-1 CABLE ASSEM. RUDDER LEFT

B-155 GUIDE 4REQ AN3-7 BOLT 4REQ AN320-3 NUT 4REQ AN380-2-2 PIN 4REQ

B12-A23 WHEEL ASSEM. CONTROL 2REQ

B-154 GUIDE 4REQ AN5-7 BOLT 4REQ AN320-3 NUT 4REQ AN380-2-2 PIN 4REQ

A-248 BLOCK 2REQ A-55-6-14 MACH. SCREW 4REQ AN335-6 WASH 4REQ AN340-6 NUT 8REQ

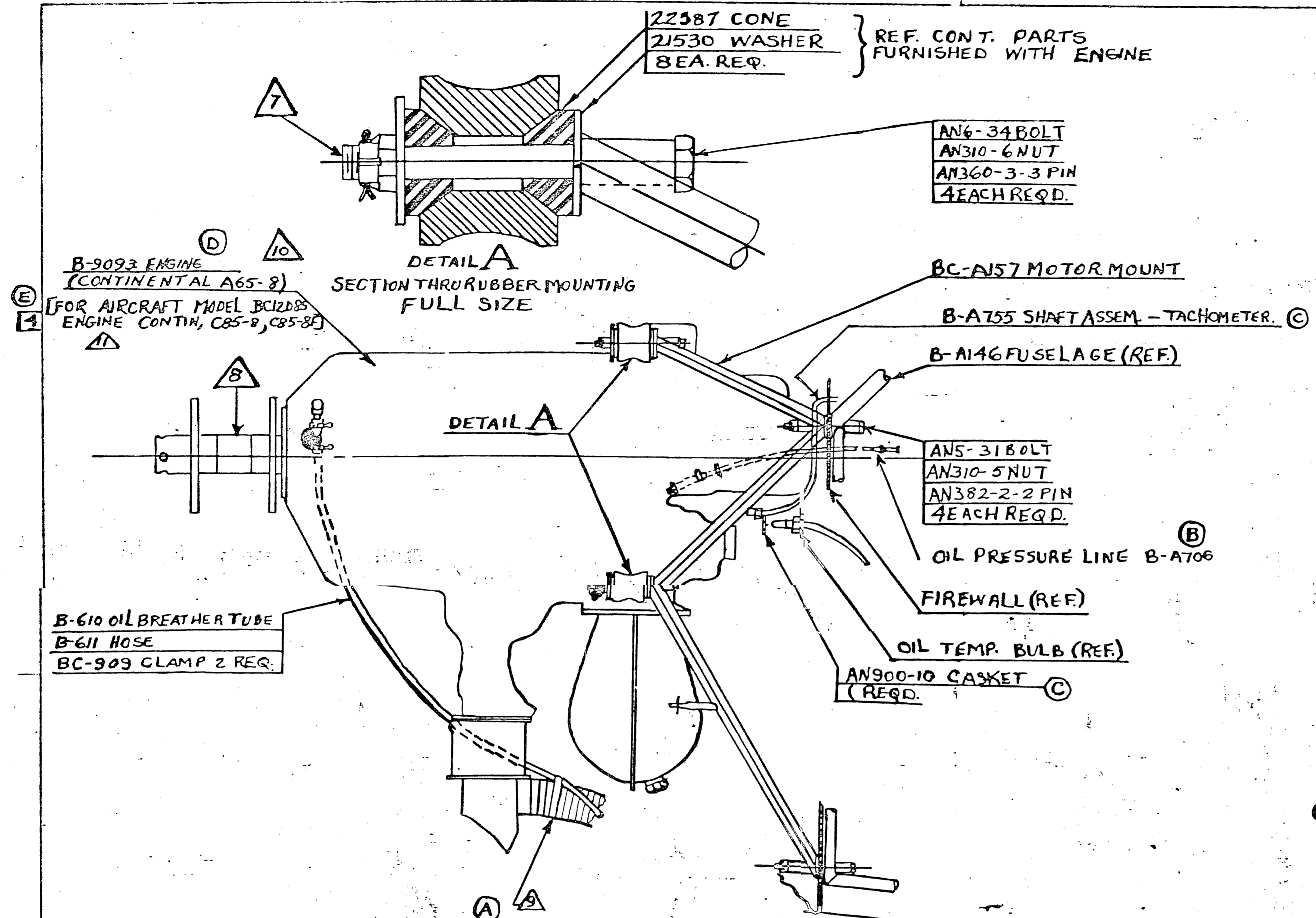
A-A23 SPROCKET ASSEM AN320-8 NUT AN380-3-3 PIN A-903 KEY

A-229 PULLEY 4REQ AN3-5 BOLT 4REQ AN320-3 NUT 4REQ AN380-2-2 PIN 4REQ A-920 BUSHING 4REQ

B-A22-2 B-A22 CONTROL COLUMN ASSEM B-27 CLAMP 2REQ B-224 SHIM 1REQ

AN3-4 BOLT 4REQ
AN310-3 NUT 4REQ
AN960-10 WASH 4REQ
AN380-2-2 PIN 4REQ

- AN5-11 2 NUT
- AN4-3 2 BOLT
- A-A27-1 1 UNIVERSAL JOINT
- AN960-10 1 WASHER
- AN315-6 4 WASHER
- AN55-6-14 4 MACH. SCREW
- AN320-3-3 4 NUT
- AN320-2-3 3 PIN
- AN320-2-2 13 PIN
- AN340-6 3 NUT
- AN320-8 2 NUT
- AN320-4 2 NUT
- AN320-3 40 NUT
- AN30-3 4 NUT
- AN416-22 2 (SAFETY) PIN
- AN320-29 2 PIN
- AN4-13 2 PIN
- AN3-5 4 BOLT
- AN960-6 2 WASHER
- AN3-10 4 BOLT
- AN3-7 12 BOLT
- AN3-6 6 BOLT
- AN3-8 9 BOLT
- AN3-4 12 BOLT
- AN515-6 1 BOLT
- B12-A2 1 CABLE ASSEM
- B-224 4 SHIM
- A-A27 1 UNIVERSAL JOINT
- B-206 2 CONNECTOR
- B-155 4 GUIDE
- B-154 4 GUIDE
- B901-1 1 BUMPER
- B-A23 1 WHEEL ASSEM
- B-A28 1 SPROCKET ASSEM
- B-A27-1 1 CABLE ASSEM
- B-E7 2 CLAMP
- B-A26-1 1 CABLE ASSEM
- B-A25 2 PEDAL ASSEM
- B-A22-2 1 CONTROL COLUMN ASSEM
- B-A21 1 BAR ASSEM
- B-A20 1 BAR ASSEM
- A-25 1 4 RUBBER CHANNEL
- A-250 4 RUBBER CHANNEL
- A-1089 2 BEARING HOUSING
- A-1088 2 BEARING HOUSING
- A-320 10 BUSHING
- A-303 2 KEY
- A-248 2 BLOCK
- A-240 2 COIL SPRING
- A-A23 1 SPROCKET ASSEM
- A-120-1 8 SPROCKET ASSEM
- A-229 5 PULLEY
- A-228 10 PULLEY
- A-146 6 BUSHING
- A-28 2 CLIP SPRING
- Q476 12 CLIP SPRING
- B-A23 2 WHEEL ASSEM



- NOTES: 1. FOR C.A. REF. ONLY, MATZ #5 O.R.C.A. APPROVED.
2. UNLESS OTHERWISE SPECIFIED, ALL BOLTS & NUTS ARE TO BE OF THE SAME TYPE & FINISH AS CALLED OUT IN THIS DRAWING. MATCHING AN 360 OR EQUIV. WASHERS (1 MAX.) MAY BE USED.
3. SPEC. NO. AND FINISH NO. ARE TO BE STANDARD.
4. ALL AN SPEC. TO LATEST REV. UNLESS OTHERWISE STATED.
5. * ACTS AS INDICATES - UNLESS OTHERWISE STATED.
6. ALL SAFETY WIRE TO SPEC. NO. 112.
7. DRAW UP NUTS ON AN 6 BOLTS TO A TORQUE OF FROM 65 TO 75 IN. LBS. (REF. CONTINENTAL MEMO REPORT #5010)
8. PROPELLER SHAFT HUB & EXPOSED WELD PARTS NOT PROPERLY RUST PROOFED TO BE COATED WITH PAR-AL-KETONE "B" OR EQUIVALENT THINNED WITH EQUAL PARTS OF LEAD FREE GASOLINE.
- (A) FASTEN WITH 1/2 INCH FRICTION TAPE - 6 WRAPS.
- (D) ALTERNATE ENGINE, 0400-195 (CONTINENTAL A65-8F) FLANGED CRANKSHAFT.
9. 0980-2, MODEL BC12D85 USE 2575 INSTEAD OF 0966-1 USE C-85 ENGINE IN PLACE OF A-65 AS DETAILED

0980

REV.	DATE	REVISION	SERIAL NO. FIRST USED	ZONE	BY	CHKD.	MODEL NO.	312P	312P
E	1/31/48	MODEL BC12D85 & CONTINENTAL C85-8 & C85-8F ADDED		24	KT	HN			
D	5/27/48	B-9093 WAS A-65-B NOTE 10 ADDED		1-3	AK	EM			
C	7/29/48	ADD. B-A755		1-4	AK	EM			
B	11/30/48	ADD OIL TEMP BULB & AN900-10		1-4	JAS	CIA			
A	9-4-48	REVISED DWG OF BREATHER LINE & ADDED NOTE 9		1-4	LAC	CIA			

REV.	DATE	REVISION	SERIAL NO. FIRST USED	ZONE	BY	CHKD.	MODEL NO.	312P	312P
0980-1									
0868-1									

REV.	DATE	REVISION	SERIAL NO. FIRST USED	ZONE	BY	CHKD.	MODEL NO.	312P	312P
E	1/31/48	MODEL BC12D85 & CONTINENTAL C85-8 & C85-8F ADDED		24	KT	HN			
D	5/27/48	B-9093 WAS A-65-B NOTE 10 ADDED		1-3	AK	EM			
C	7/29/48	ADD. B-A755		1-4	AK	EM			
B	11/30/48	ADD OIL TEMP BULB & AN900-10		1-4	JAS	CIA			
A	9-4-48	REVISED DWG OF BREATHER LINE & ADDED NOTE 9		1-4	LAC	CIA			

TAYLORCRAFT AVIATION CORP. ALLIANCE O.

LIMITS ON DIMS
FRACTIONAL
DECIMAL
ANGLES

HAND FINISH
SMOOTH FINISH
ROUGH FINISH
POLISHED FINISH
OR GRIND

STYL
DATE 6-22-48
CHKD BY J.M.
DATE 9-1-48

ENGINE INSTALLATION
CONTINENTAL A-65 & C85

0980